

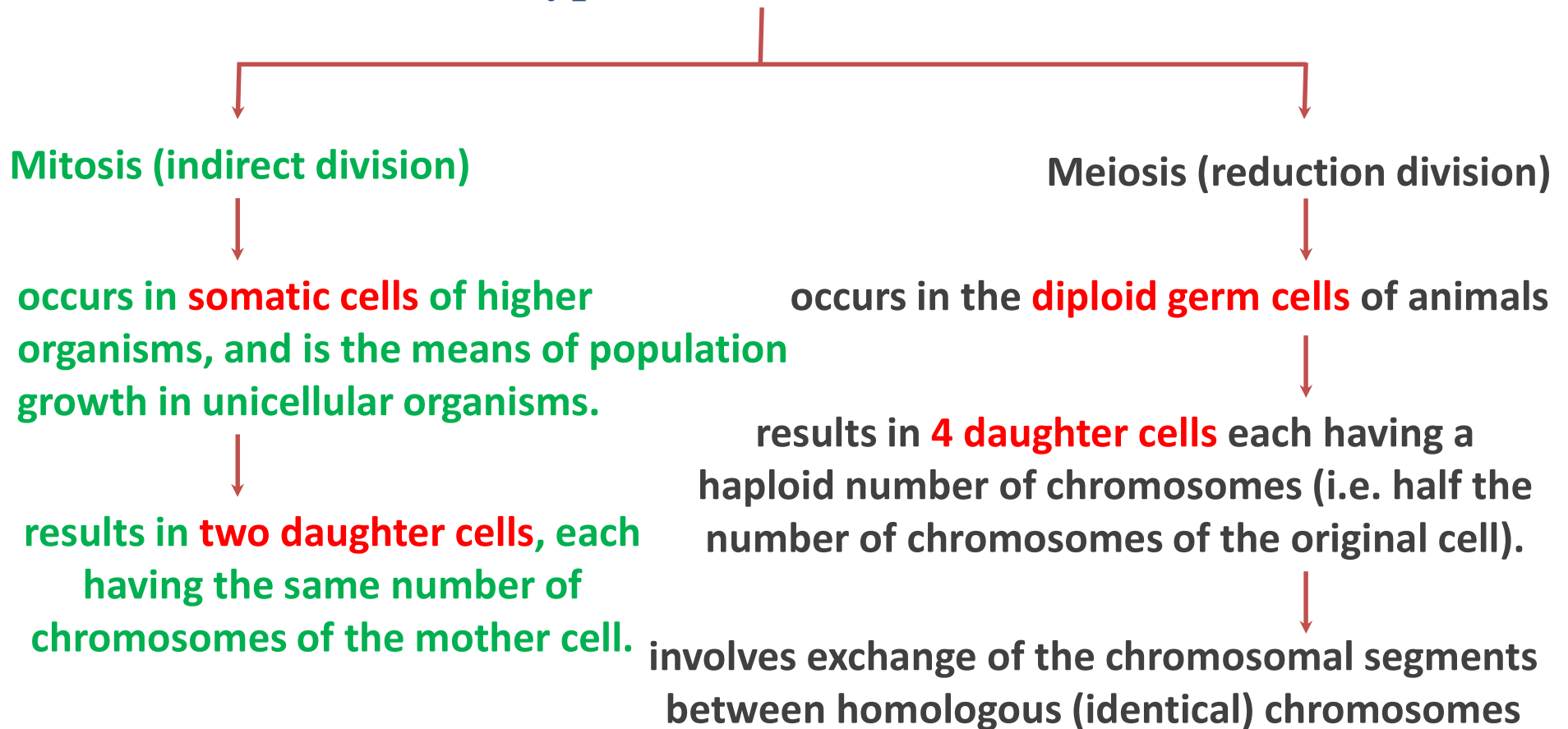
The Cell Division

Mitosis & Meiosis

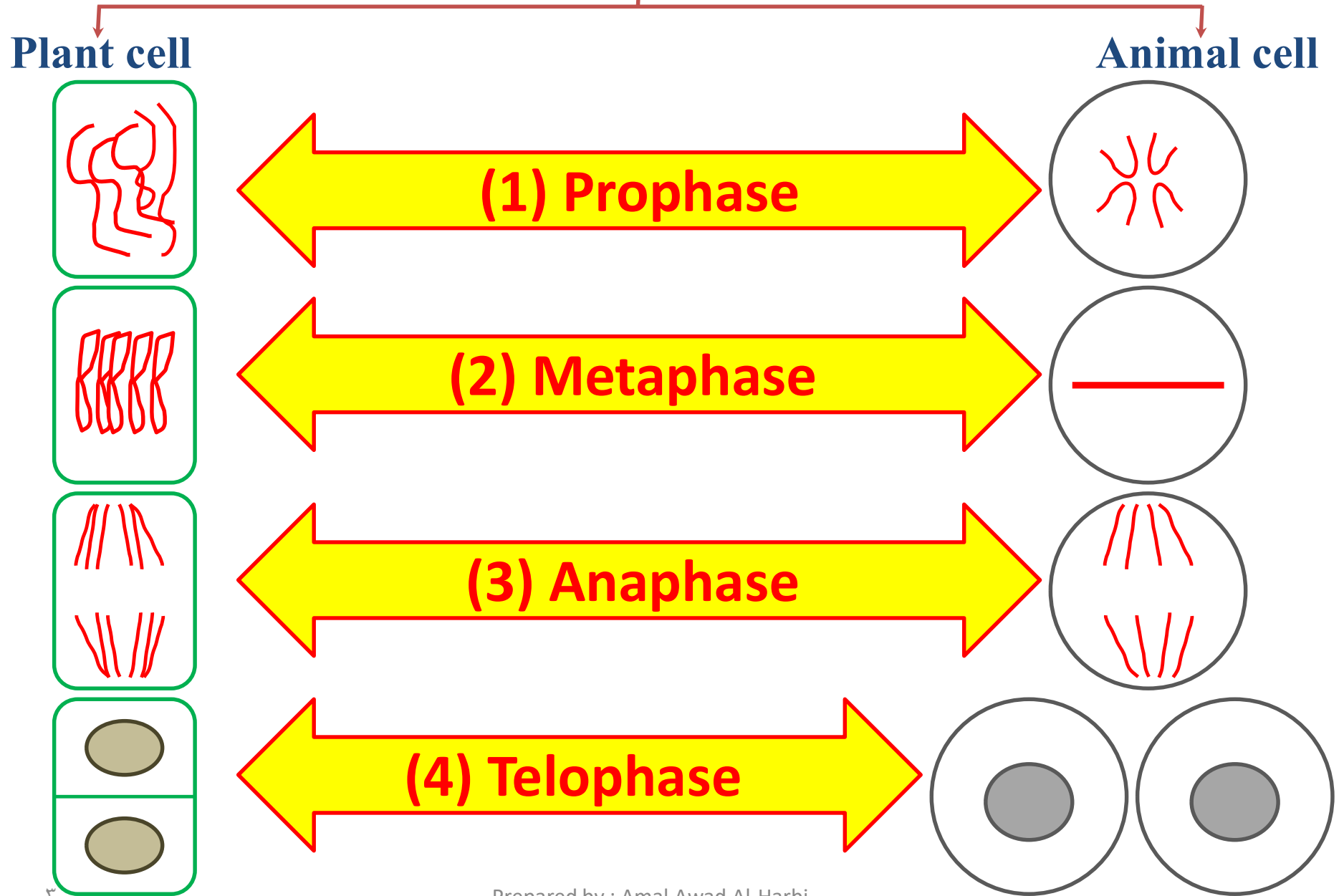
The Cell Division

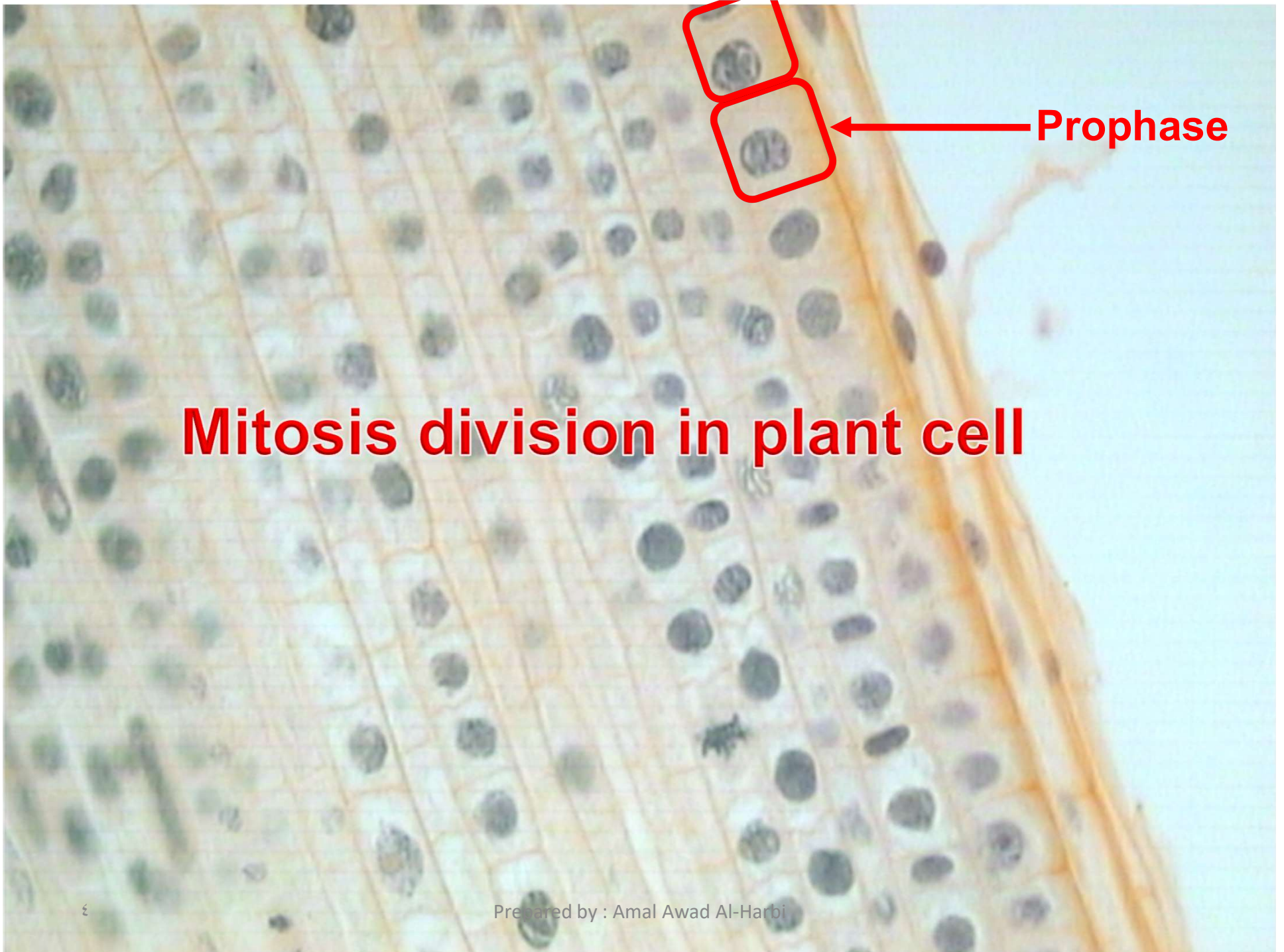
Cell division is a process by which the cellular material is divided between 2 new daughter cells.

Types of cell division:



The phases of Mitosis division





Mitosis division in plant cell

Prophase

Mitosis division in plant cell

Metaphase



Mitosis division in plant cell



Anaphase

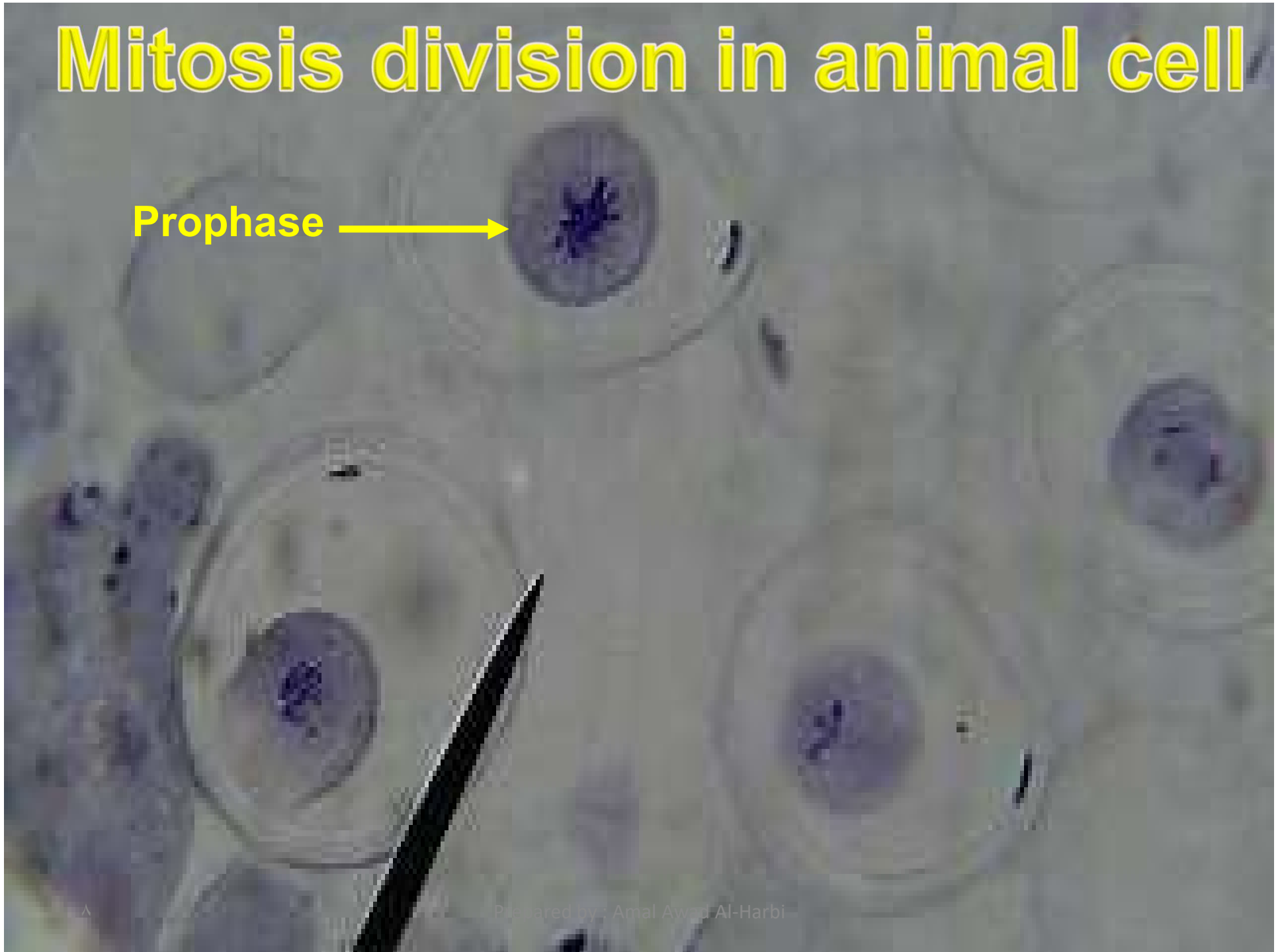
Mitosis division in plant cell



Telophase

Mitosis division in animal cell

Prophase →



Mitosis division in animal cell

Metaphase





Metaphase

Mitosis division in animal cell

Mitosis division in animal cell

Anaphase

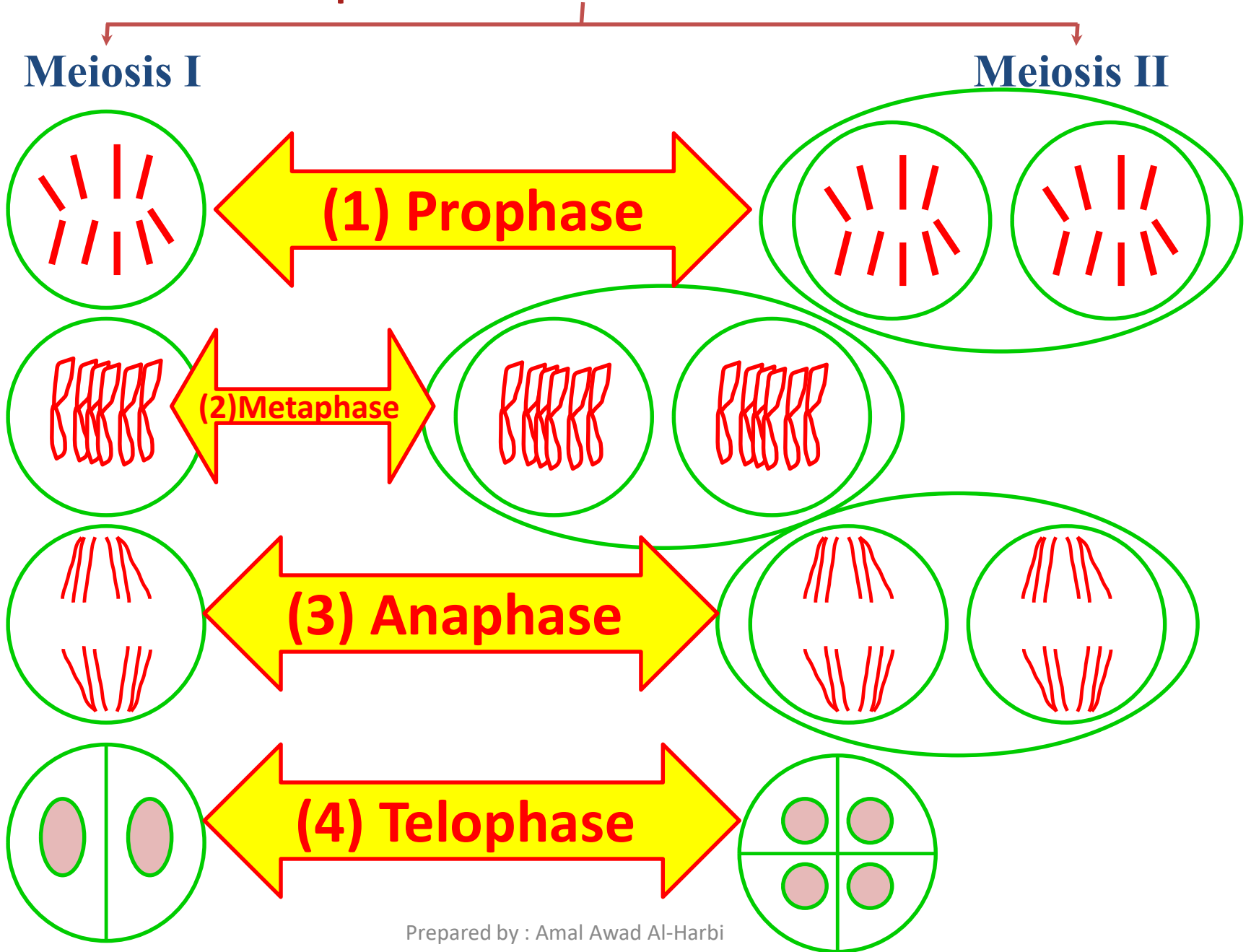


Mitosis division in animal cell

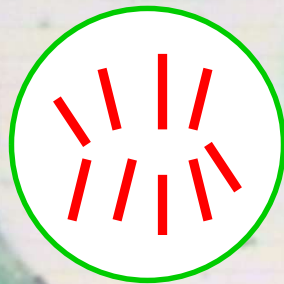
Telophase



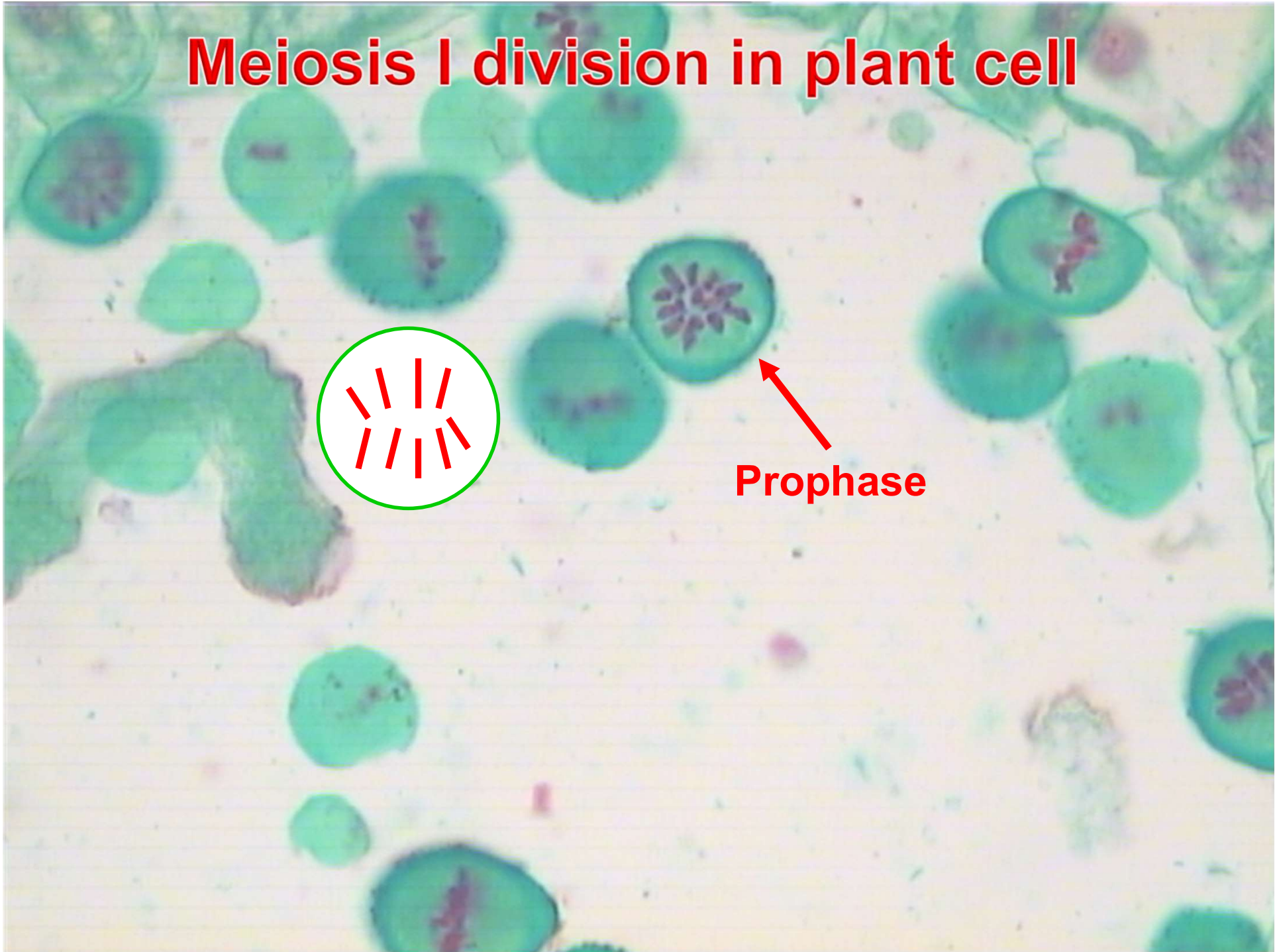
The phases of Meiosis division



Meiosis I division in plant cell



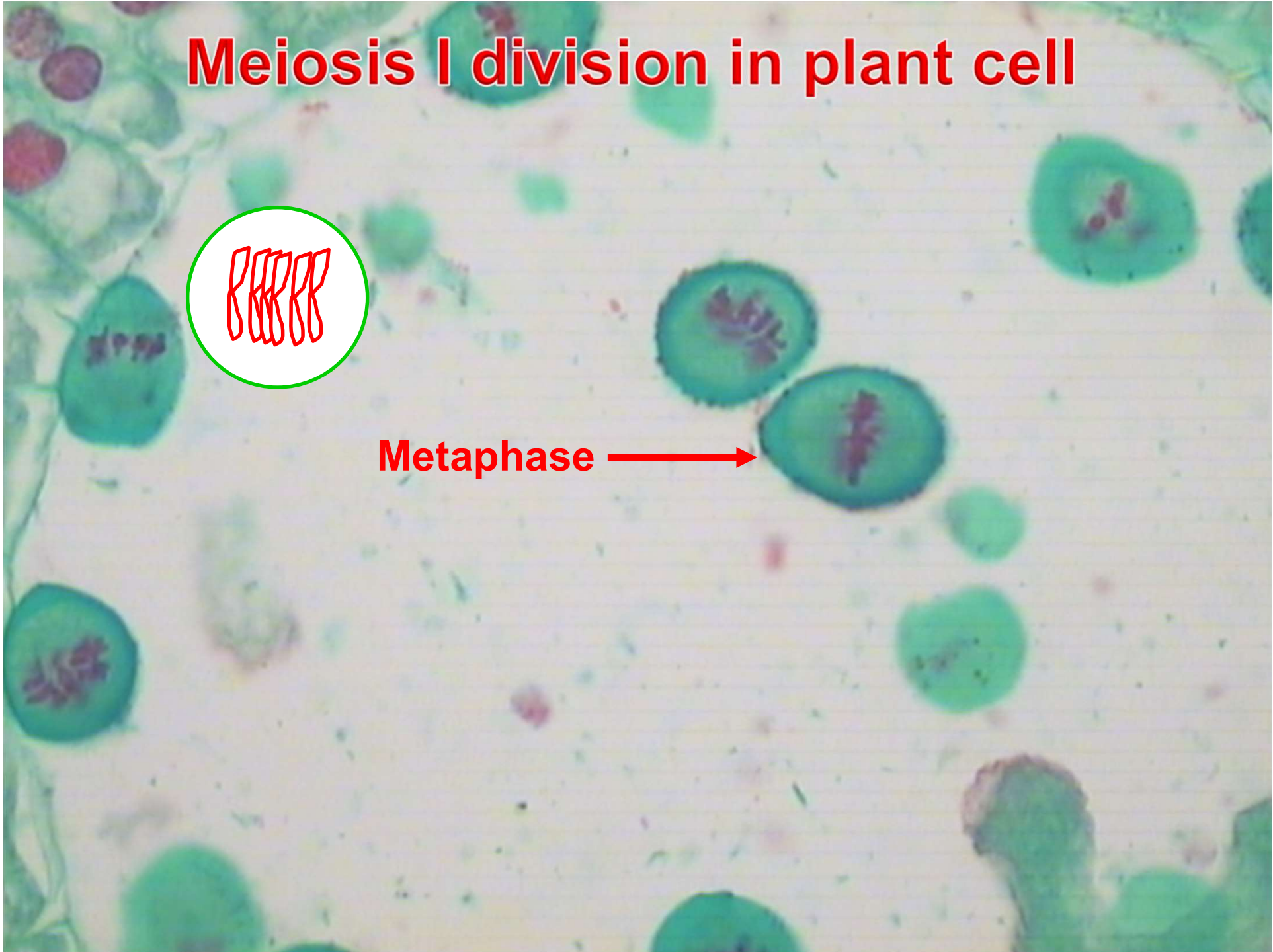
Prophase



Meiosis I division in plant cell

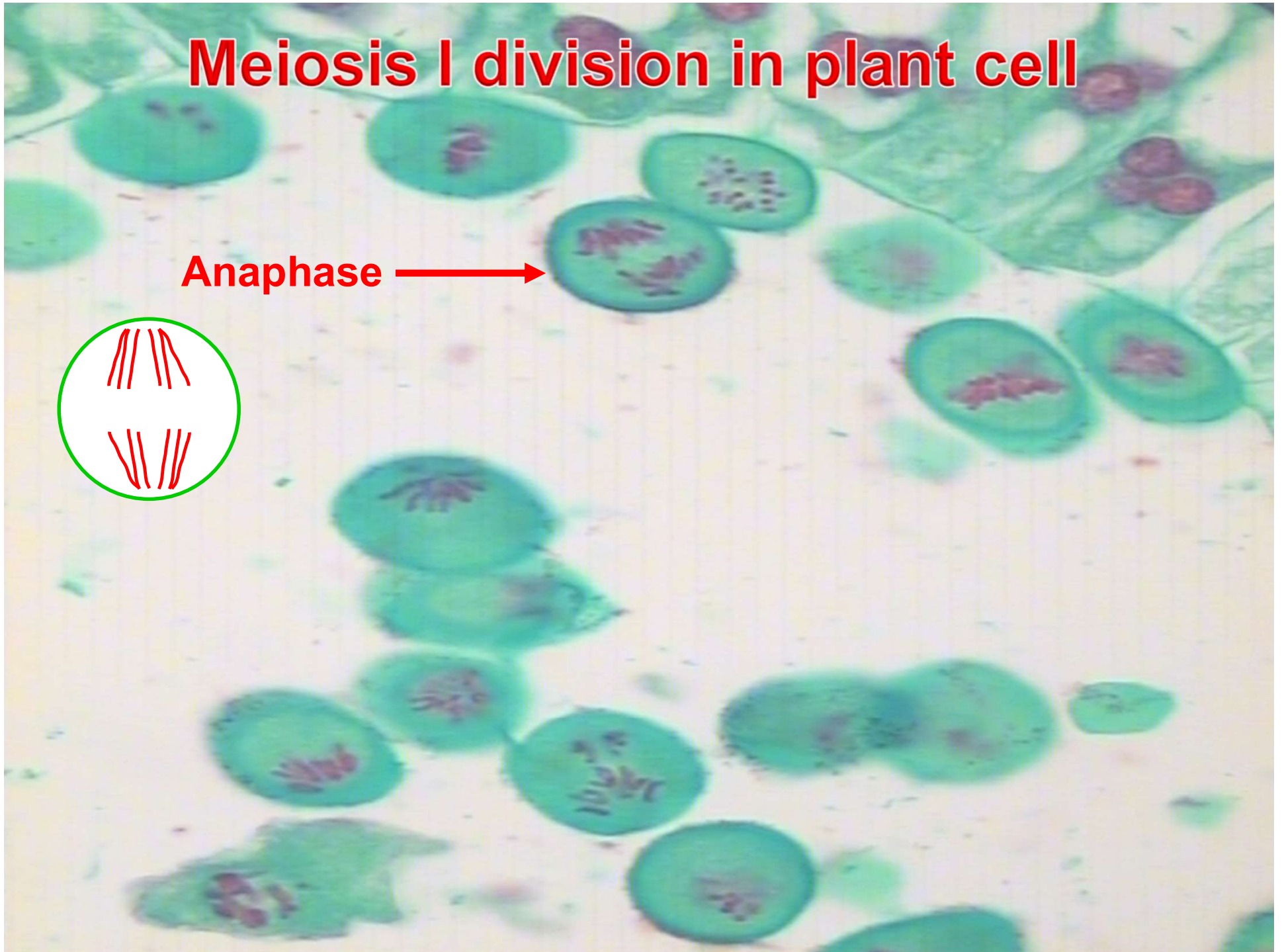
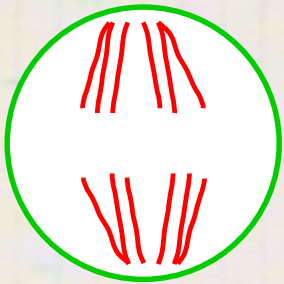


Metaphase →



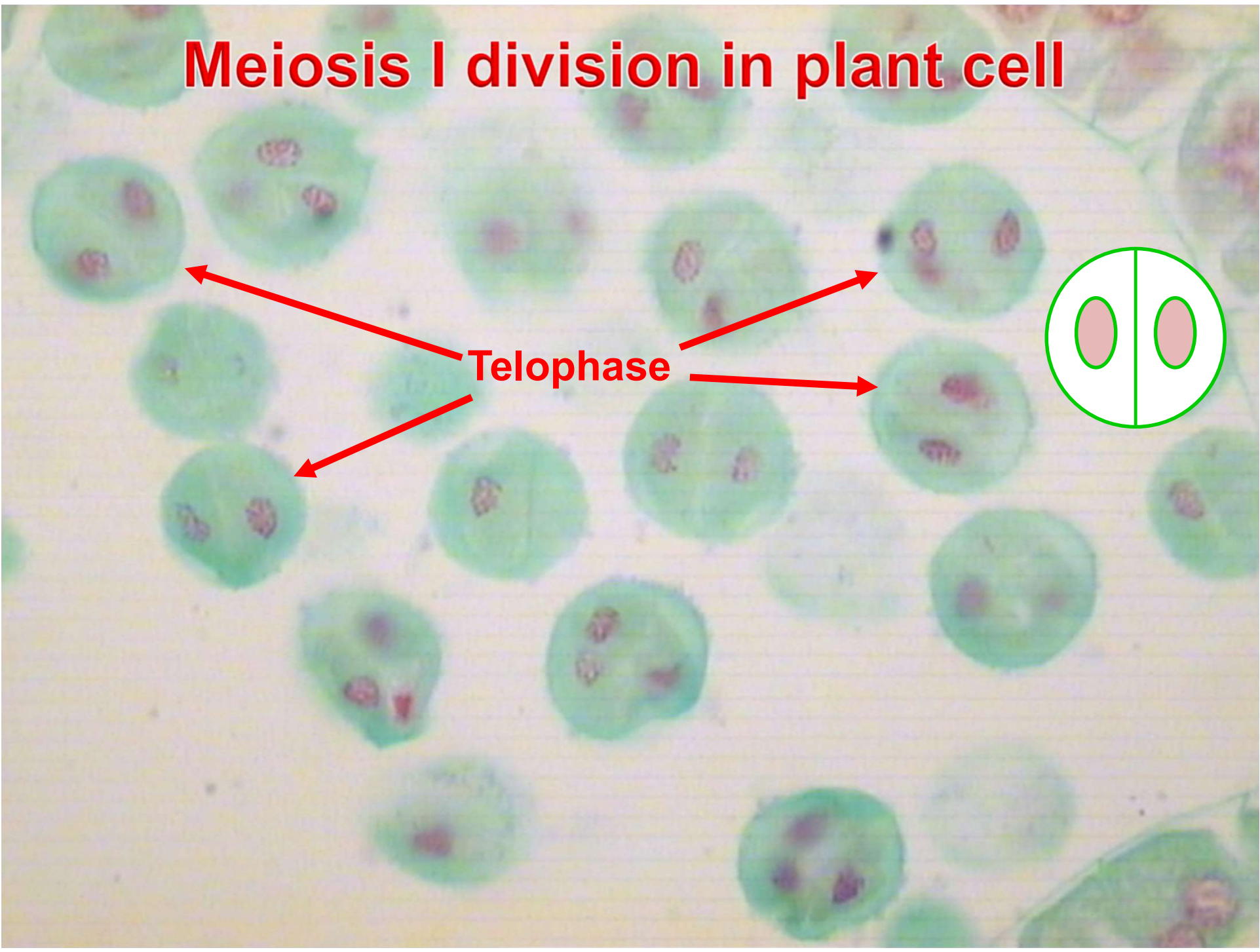
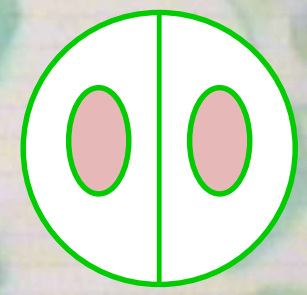
Meiosis I division in plant cell

Anaphase →



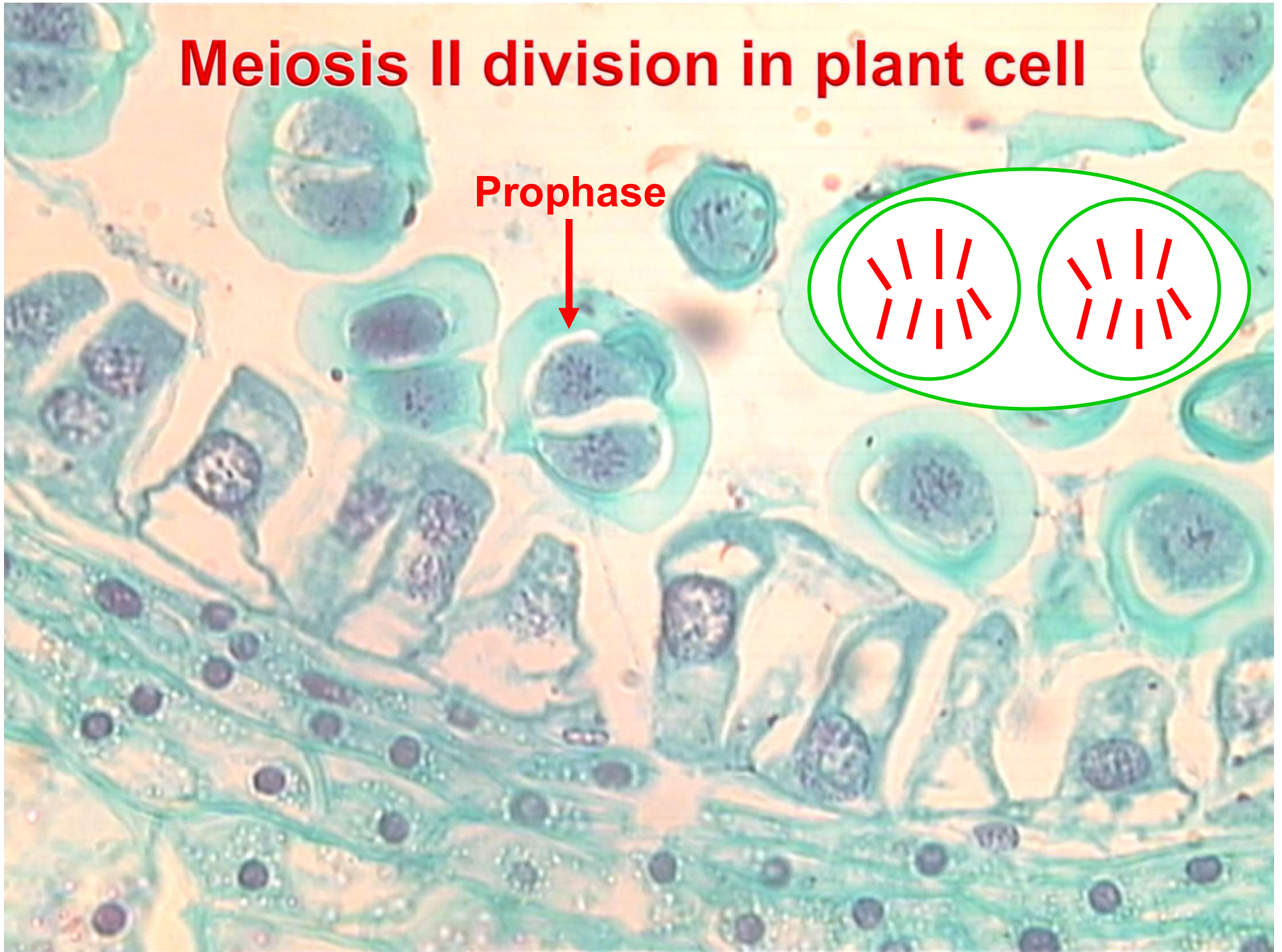
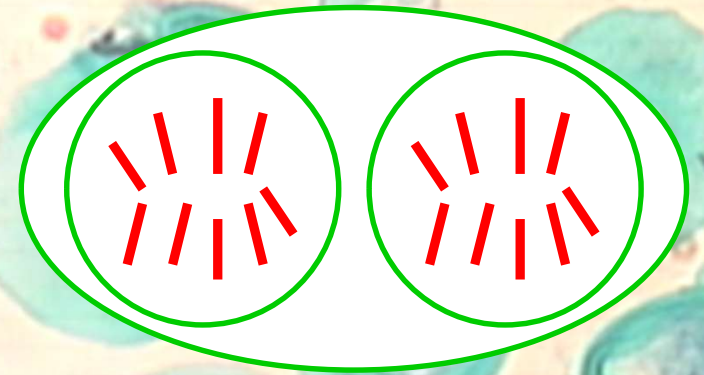
Meiosis I division in plant cell

Telophase



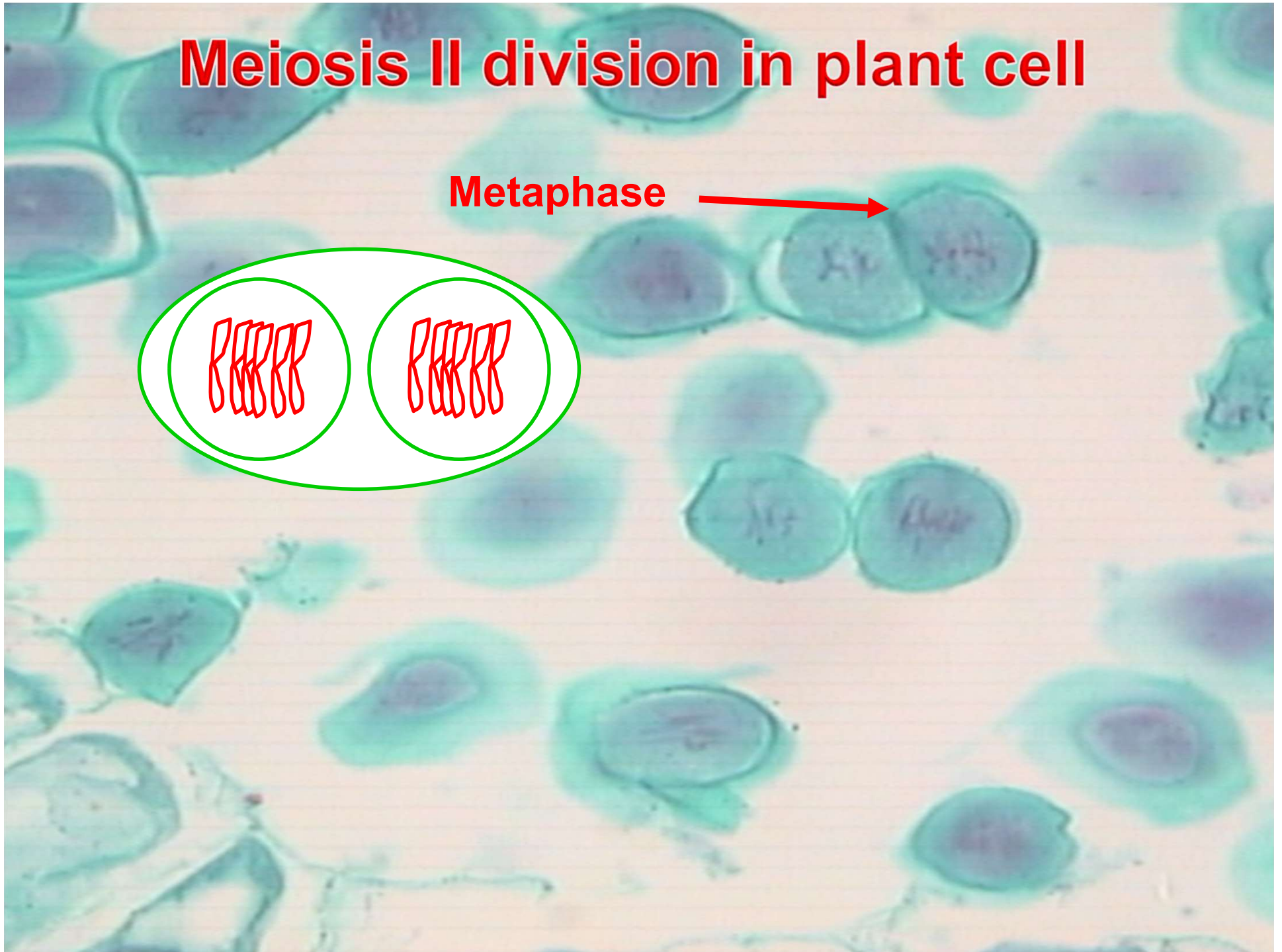
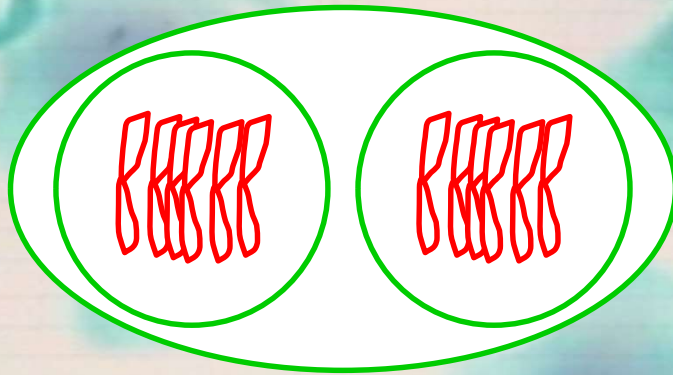
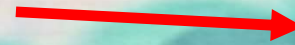
Meiosis II division in plant cell

Prophase



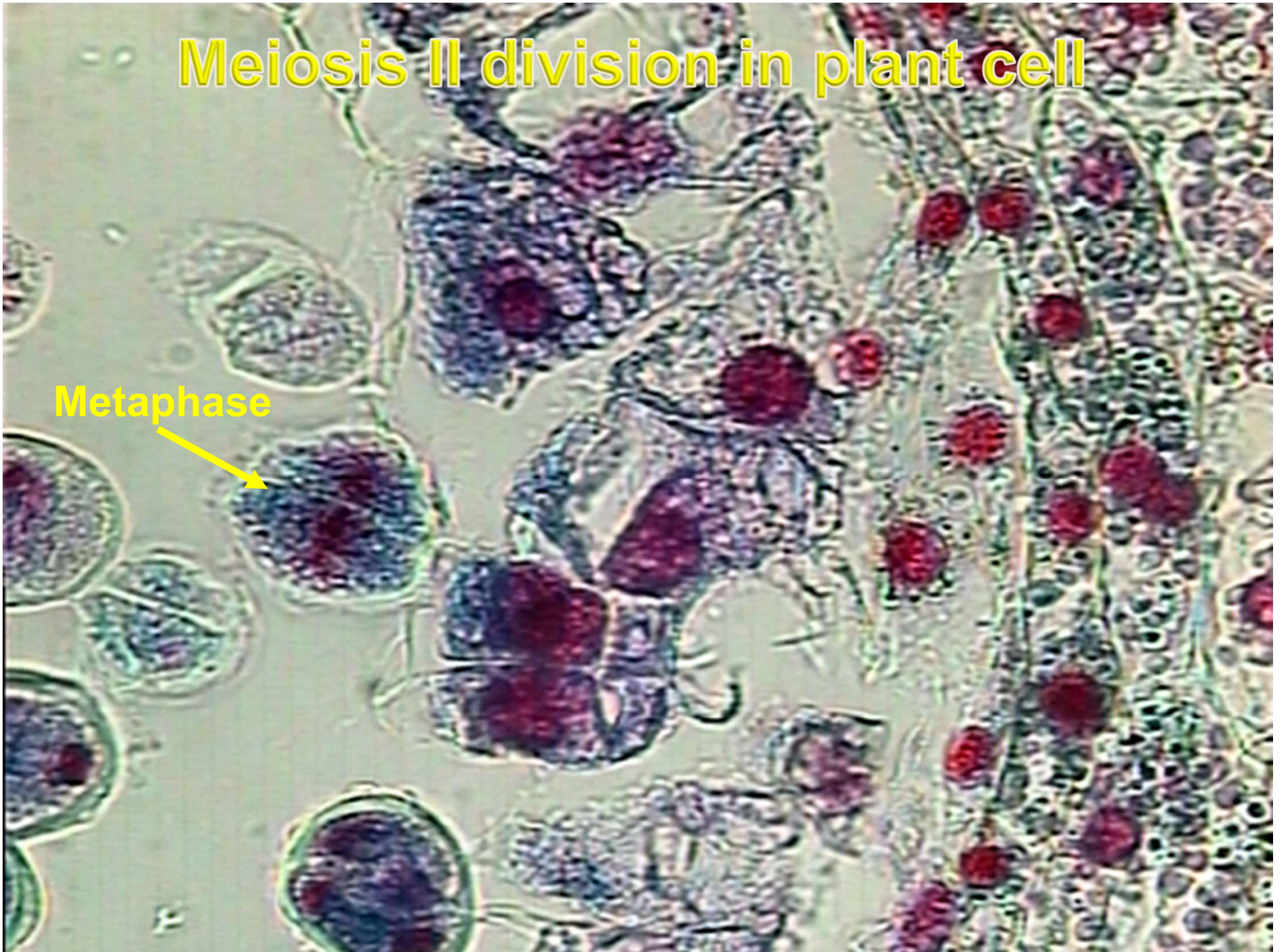
Meiosis II division in plant cell

Metaphase



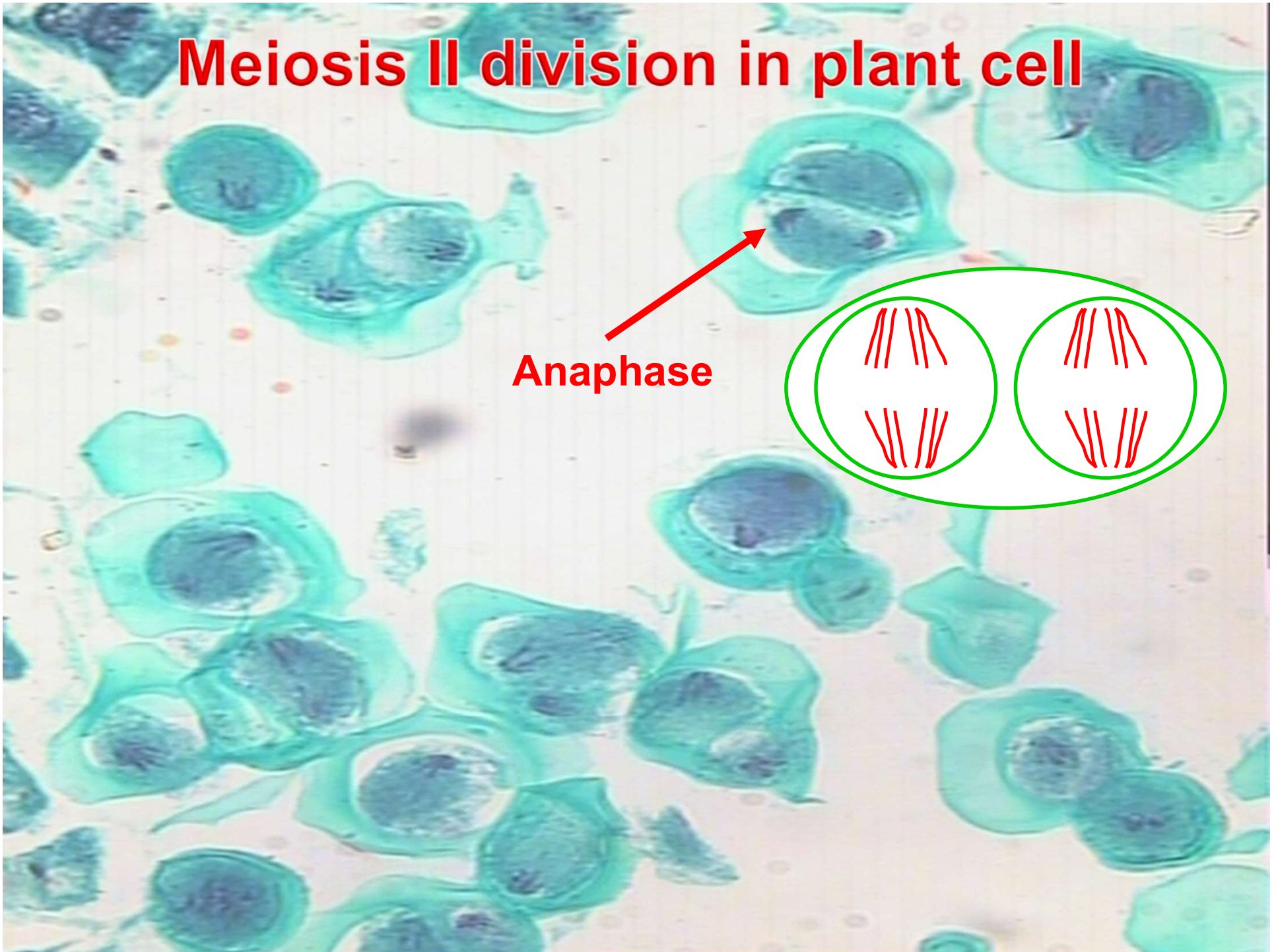
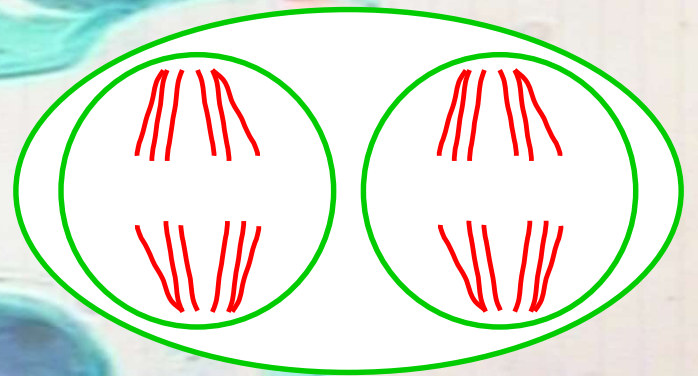
Meiosis II division in plant cell

Metaphase



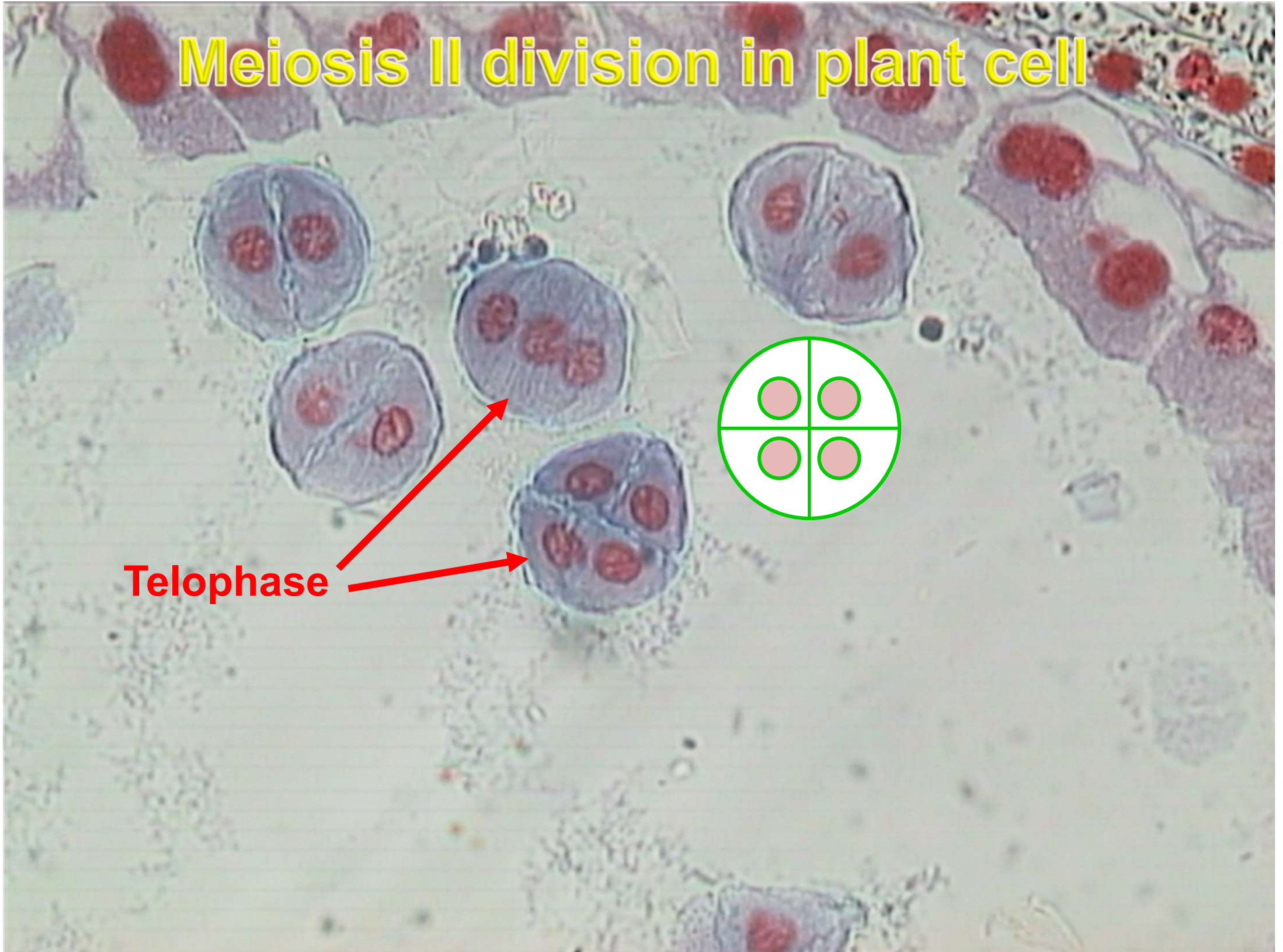
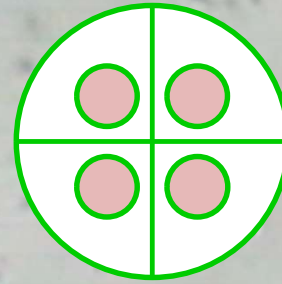
Meiosis II division in plant cell

Anaphase



Meiosis II division in plant cell

Telophase



Any questions?



