

IE-341

Section 1, CRN: 30512/513/514

Section 2, CRN: 30515/516/517

Section 3, CRN: 46950/951/952

First Semester 1435-36 H (Fall-2014) – 3(2,1,2)

“HUMAN FACTORS ENGINEERING

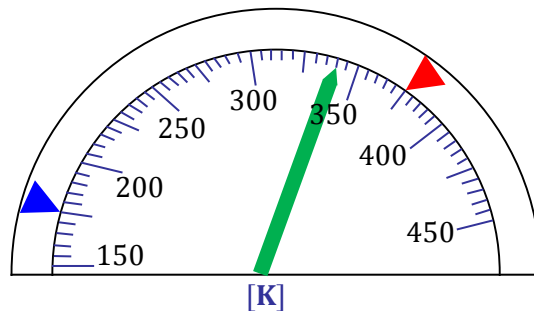
Wednesday, December 17, 2014 (25/02/1436H)

Quiz 3 **ANSWERS**

Name:	Student Number:	Section:
	4	Sun / Mon / Wed

Answer ALL of the following questions.

Use the blank “temperature” scale diagram below to indicate,



- 1) Scale type: fixed scale, moving pointer [1 point]
- 2) Scale unit: 2.5 *Kelvins* [1 point]
- 3) Scale range: 150 – 450 [2 points]
- 4) Numbered intervals: 50 [1 point]
- 5) Intermediate intervals: 25 [1 point]
- 6) Graduation intervals: 5 [1 points]
- 7) Pointer @ 340 K [1 point]
- 8) Qualitative markings indicating,

- 
- a) Maximum temperature (above 375  $K$ ) [1 point]
  - b) Minimum temperature (below 175  $K$ ) [1 point]

IE-341

Section 1, CRN: 30512/513/514

Section 2, CRN: 30515/516/517

Section 3, CRN: 46950/951/952

First Semester 1435-36 H (Fall-2014) – 3(2,1,2)

“HUMAN FACTORS ENGINEERING

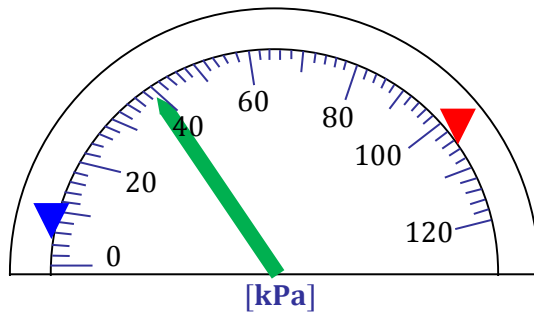
Wednesday, December 17, 2014 (25/02/1436H)

Quiz 3 **Answers**

Name:	Student Number:	Section:
	4	Sun / Mon / Wed

**Answer ALL of the following questions.**

**Use the blank “pressure” scale diagram below to indicate,**



- 1) Scale type: fixed scale, moving pointer [1 point]
- 2) Scale unit: 1 *kPa* [1 point]
- 3) Scale range: 0 – 120 [2 points]
- 4) Numbered intervals: 20 [1 point]
- 5) Intermediate intervals: 10 [1 point]
- 6) Graduation intervals: 2 [1 points]
- 7) Pointer @ 39 *kPa* [1 point]
- 8) Qualitative markings indicating,

- 
- a) Maximum pressure (above 105 *kPa*) [1 point]  
b) Minimum pressure (below 5 *kPa*) [1 point]

IE-341

Section 1, CRN: 30512/513/514

Section 2, CRN: 30515/516/517

Section 3, CRN: 46950/951/952

First Semester 1435-36 H (Fall-2014) – 3(2,1,2)

“HUMAN FACTORS ENGINEERING

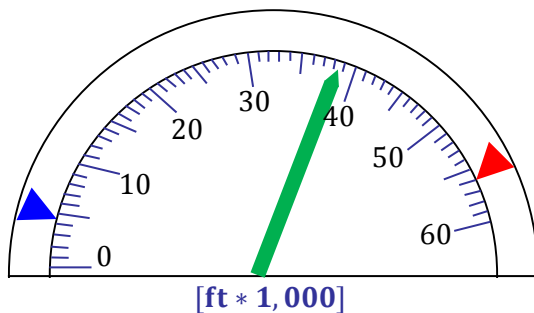
Wednesday, December 17, 2014 (25/02/1436H)

Quiz 3 **Answers**

Name:	Student Number:	Section:
	4	Sun / Mon / Wed

Answer ALL of the following questions.

Use the blank “altitude” scale diagram below to indicate,



- 1) Scale type: fixed scale, moving pointer [1 point]
- 2) Scale unit: 500 ft [1 point]
- 3) Scale range: 0 – 60,000 [2 points]
- 4) Numbered intervals: 10,000 [1 point]
- 5) Intermediate intervals: 5,000 [1 point]
- 6) Graduation intervals: 1,000 [1 points]
- 7) Pointer @ 38,500 ft [1 point]
- 8) Qualitative markings indicating,

- 
- a) Maximum altitude (above 56,000 *ft*) [1 point]
  - b) Minimum altitude (below 4,500 *ft*) [1 point]