

The Structures of the Digestive system

The upper (G.i.tract) consists of

- Mouth
- Pharynx
- Esophagus
- Stomach

The lower (G.i.tract) consists of

- Small intestine
- Large intestine
- Rectum, and anus

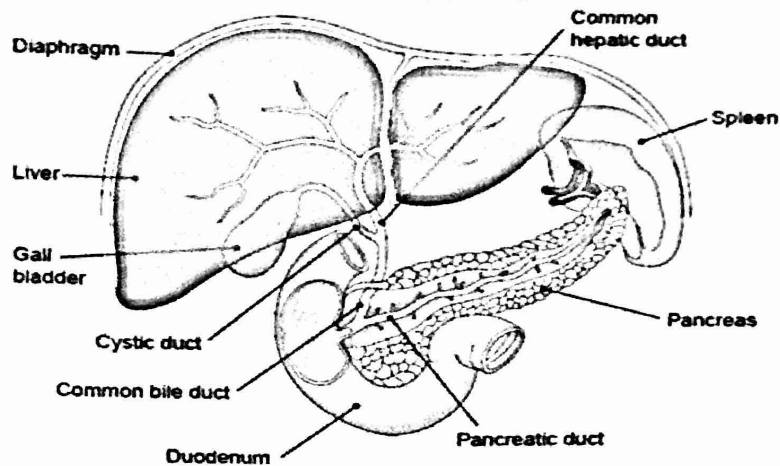
ACCESSORY ORGANS OF DIGESTION

Includes

- Liver
- Gall Bladder
- Pancreas

They make and store chemicals that aid in the digestion of foods.

ACCESSORY ORGANS OF DIGESTION



The Small Intestine

■ duodenum

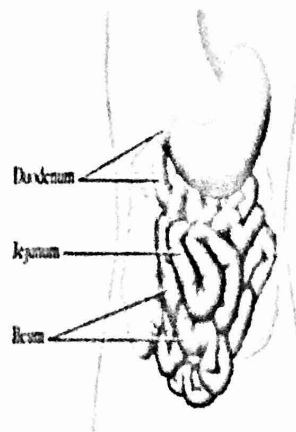
1st part of the small intestine.

■ Jejunum

2nd part of the small intestine.

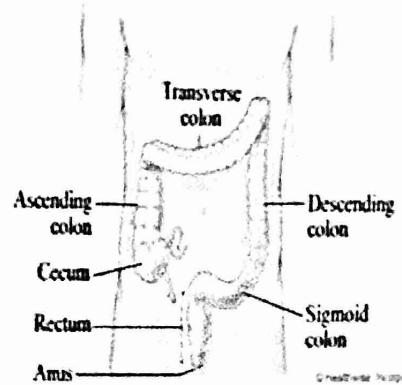
■ Ileum

3rd part of the small intestine.



The colon is subdivided into four parts

- 1-The Ascending colon.
- 2-The Transverse colon
- 3-The Descending colon.
- 4-The Sigmoid colon.



MORE SUFFIXES

_eal	pertaining to
_ary	pertaining to
_Ous	pertaining to
_stomy	opening
_plasty	surgical repair
_pathy	disease condition