

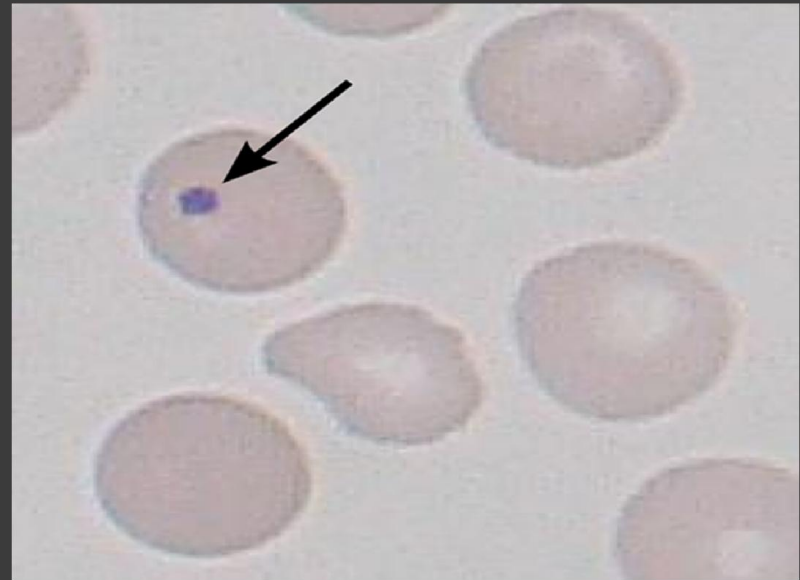
4-Variation in content



Late normoblast (nucleated RBC)

normally present In BM
abnormal in peripheral blood

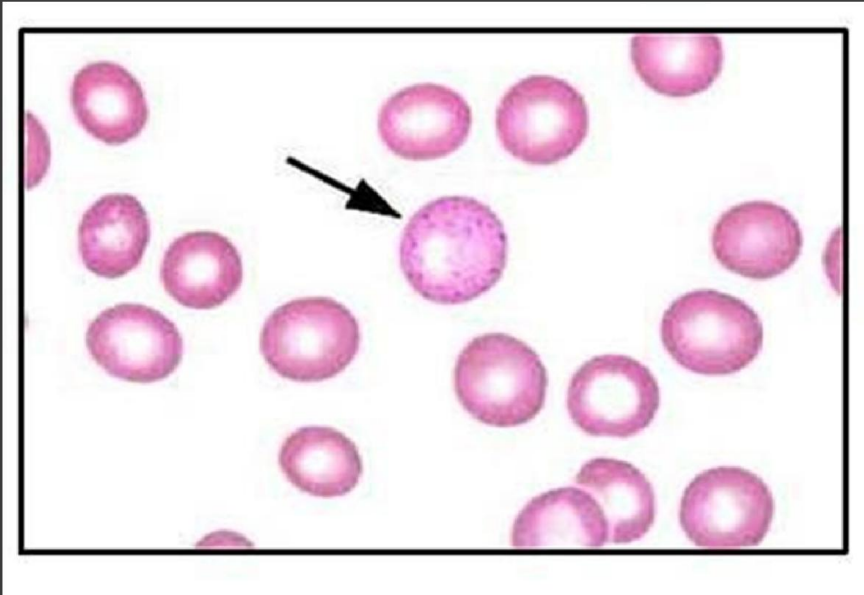
e.g: thalasemia



Howell-Jolly body:

DNA remnant

e.g:under developed spleen

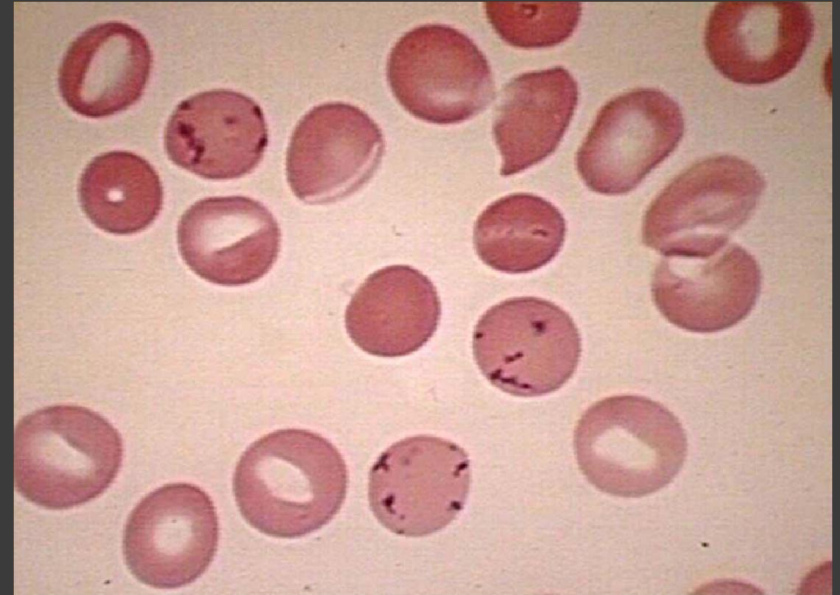


Basophilic stippling

denatured

RNA

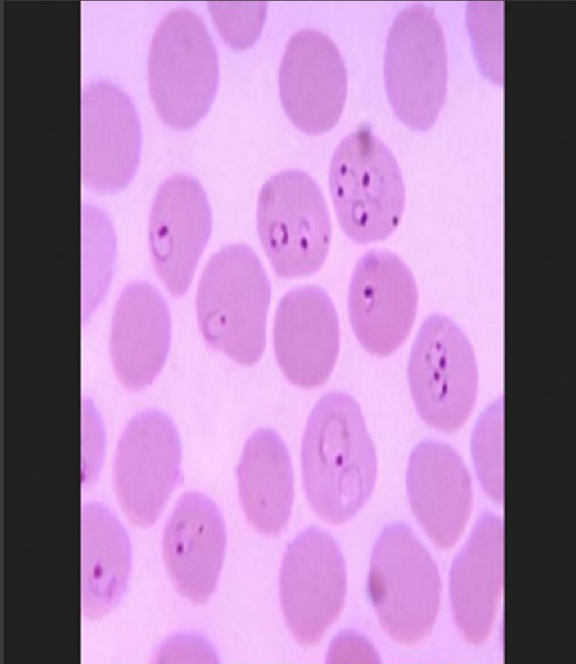
e.g: megaloblastic anaemia



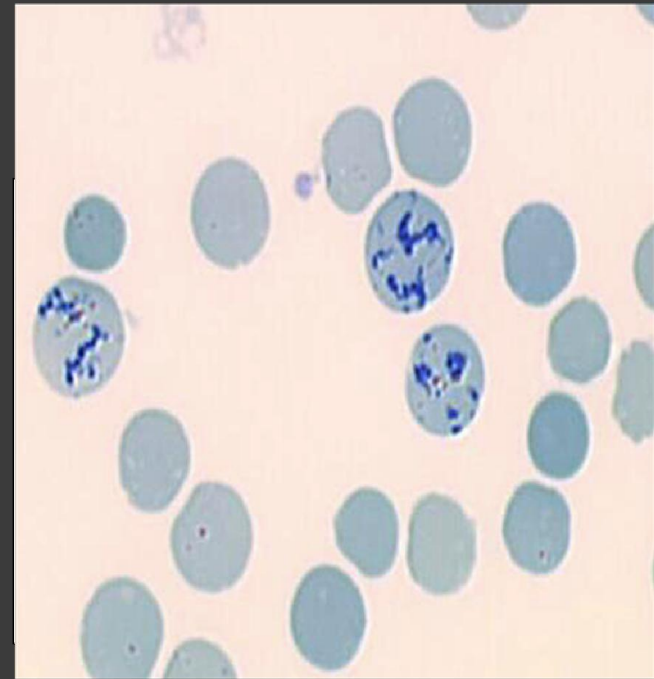
Siderotic granules (Pappenheimer bodies)

contain iron due to Hb oxidization

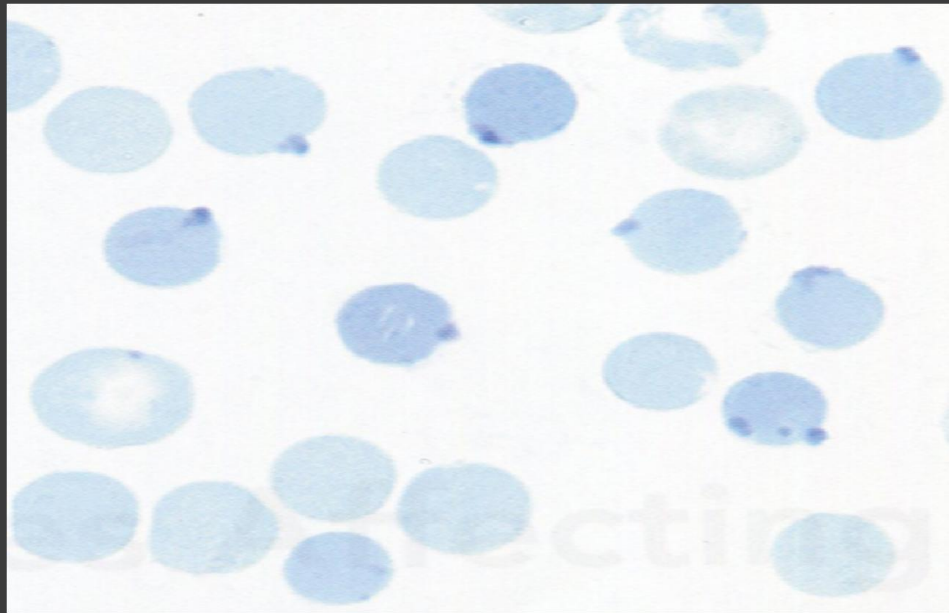
they are purple in conventional
staining but blue with perl's
stain



Malarial parasite
inside RBC



Reticulocyte (RNA)
young RBC contain
ribosome and RNA
present in BM and blood
Stain by supravital staining
e.g: new methelene blue
Brilliant cresyl blue



Heinz bodies

Oxidized denatured Hb
Found in G6PD deficiency
Stain by supravital staining
e.g: new methelene blue
Brilliant cresyl blue