

K: Monera

D: Cyanophyta

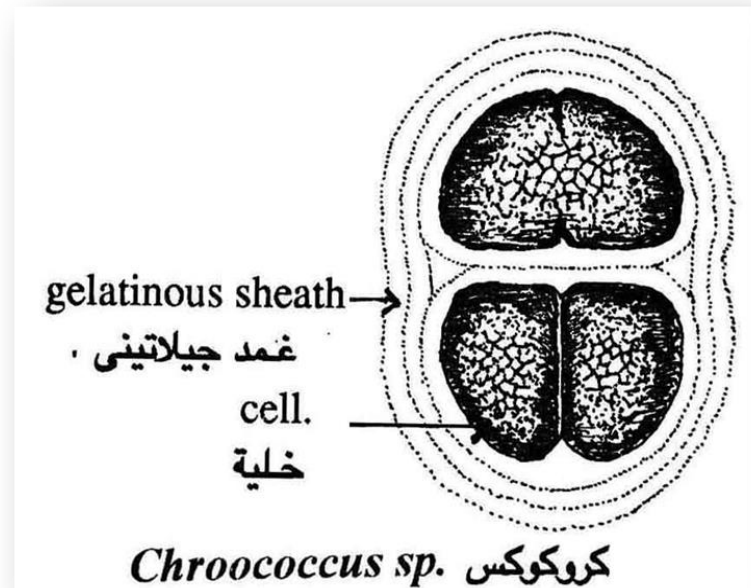
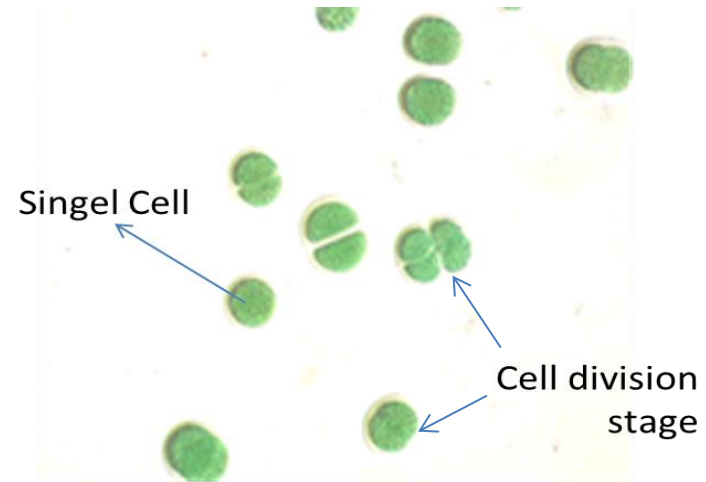
Cl: Cyanophyceae

Or: Chroococcales

F: Chroococcaceae

Ex: *Chroococcus sp.*

characterized by spherical cells (2–8 μm) enclosed in distinct, firm, often layered mucilaginous sheaths, forming groups of 2, 4, or more cells that appear hemispherical within their common envelope, with cell division occurring in various planes.



K: Monera

D: Cyanophyta

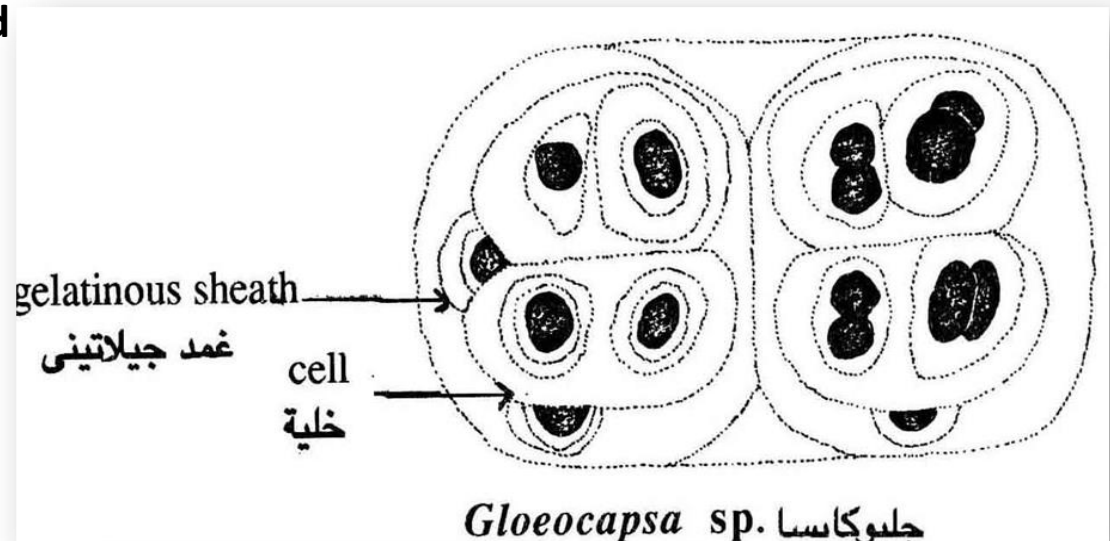
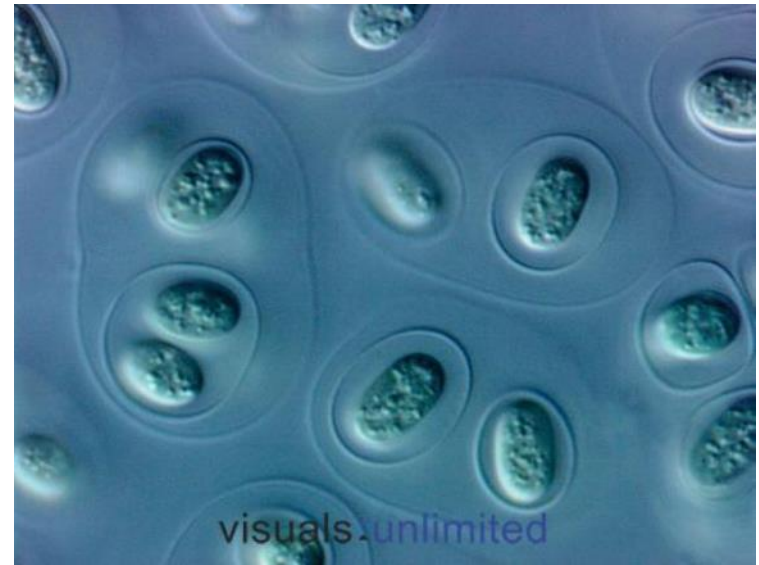
Cl: Cyanophyceae

Or: Chroococcales

F: Chroococcaceae

Ex: *Gloeocapsa* sp.

forming small, spherical colonies (colonies) of oval cells embedded in thick, concentric layers of protective mucilage (gelatinous sheath), Each cell contains photosynthetic pigments (chlorophyll, phycobilins) and ribosomes, dividing by binary fission within these sheaths.



K: Monera

D: Cyanophyta

Cl: Cyanophyceae

Or: Chroococcales

F: Chroococcaceae

Ex: *Microcystis sp.*

spherical to irregular colonies encased in a thick, gelatinous mucilage, containing gas vesicles for buoyancy and photosynthetic pigments, appearing blue-green but often dark due to vesicles, and notable for producing potent hepatotoxins called microcystins.

Spherical Cell

