



Cardiac Surgery an Overview

Ahmed Alsaddique

Associate Professor



- **Please note that this is only an excerpt of this course.**



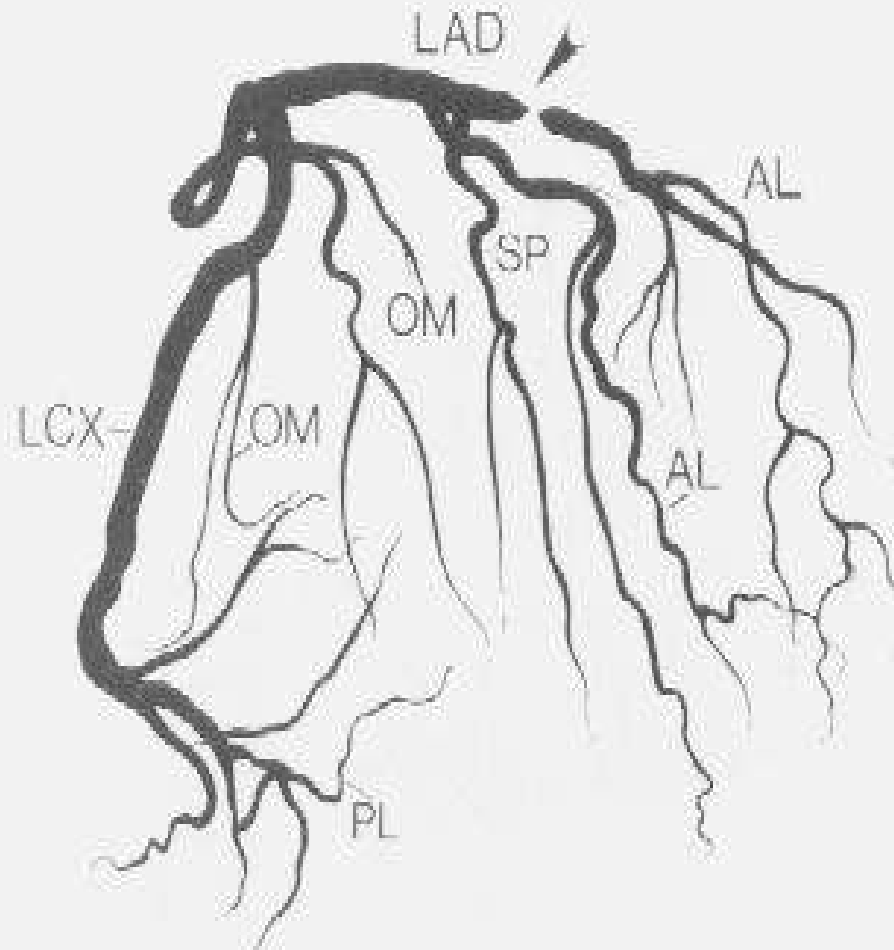
Cardiac diseases are divided into two subgroups:

- **Congenital heart disease**
 - **Acquired heart disease**
- 

Clinical Assessment

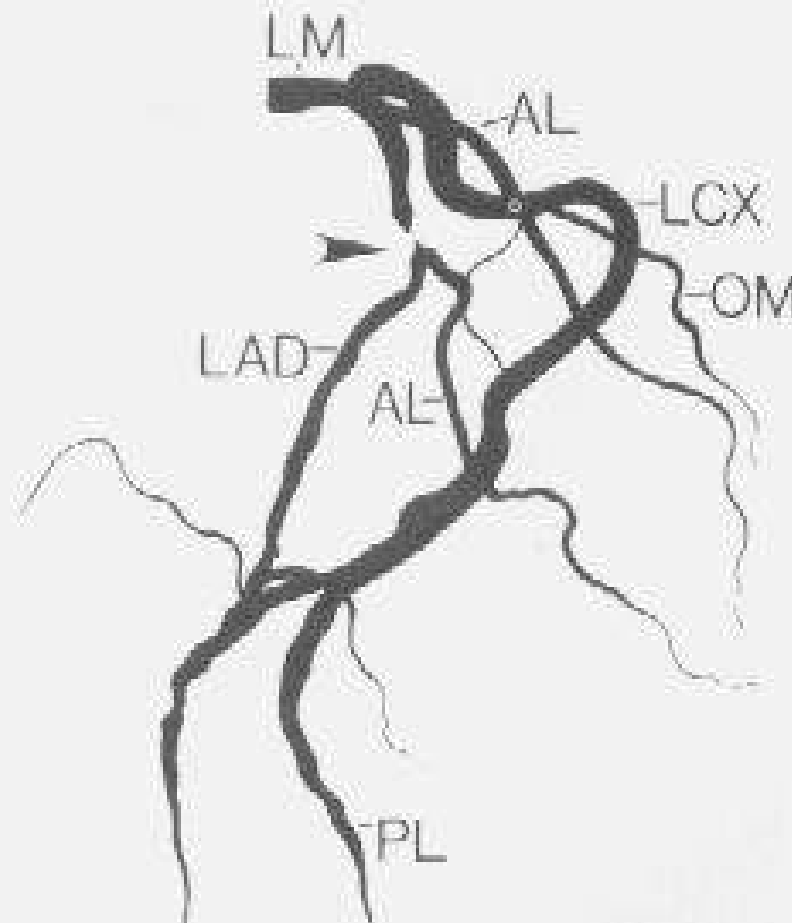
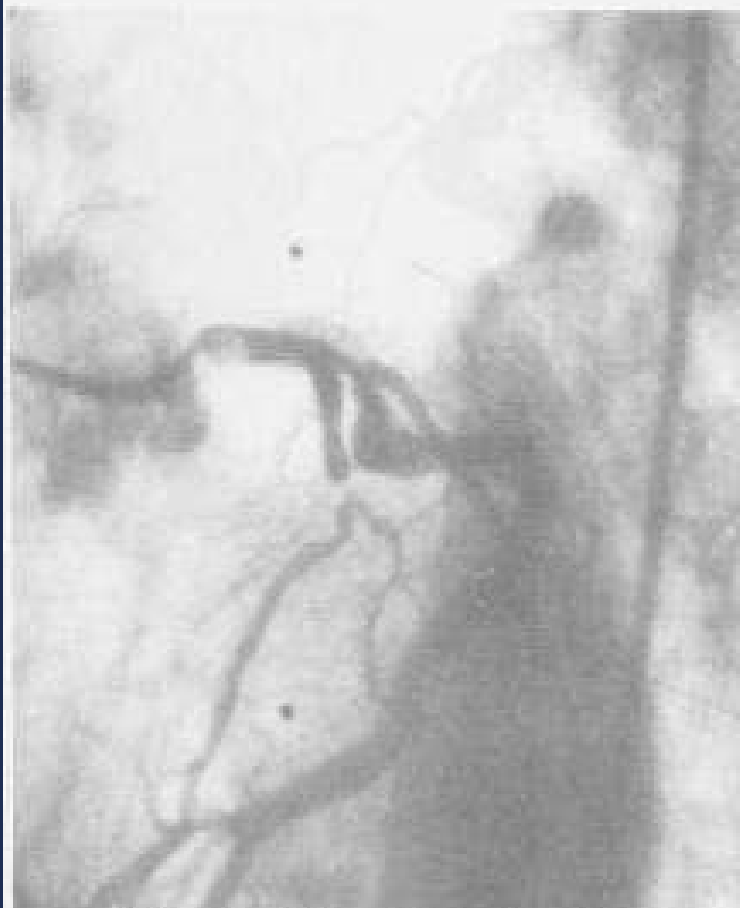


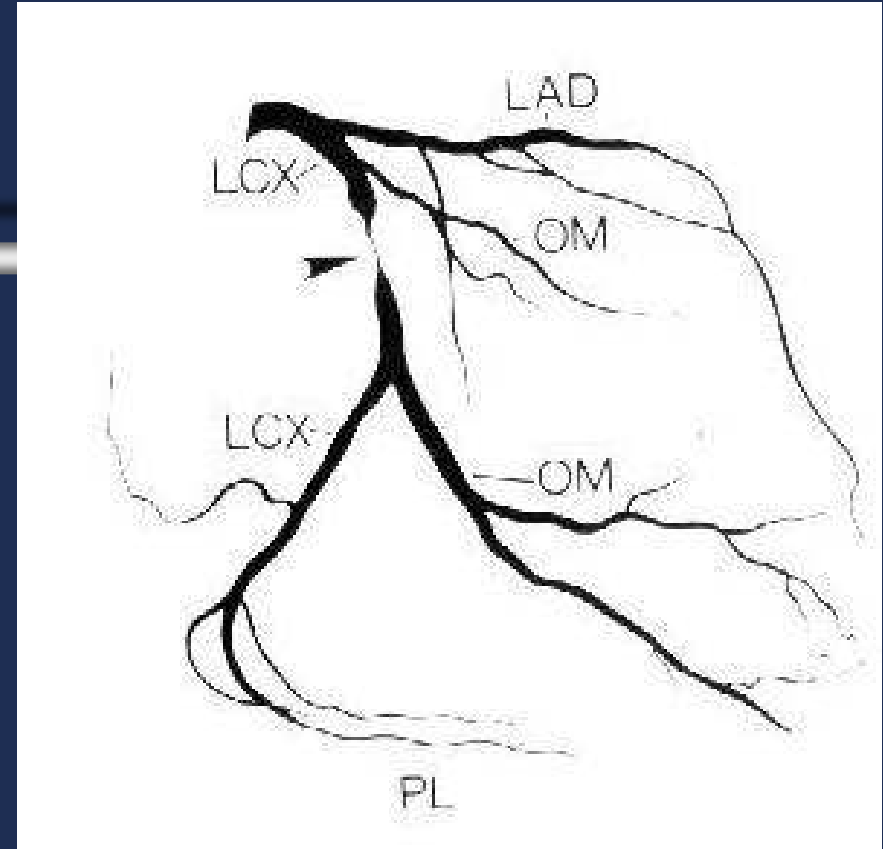
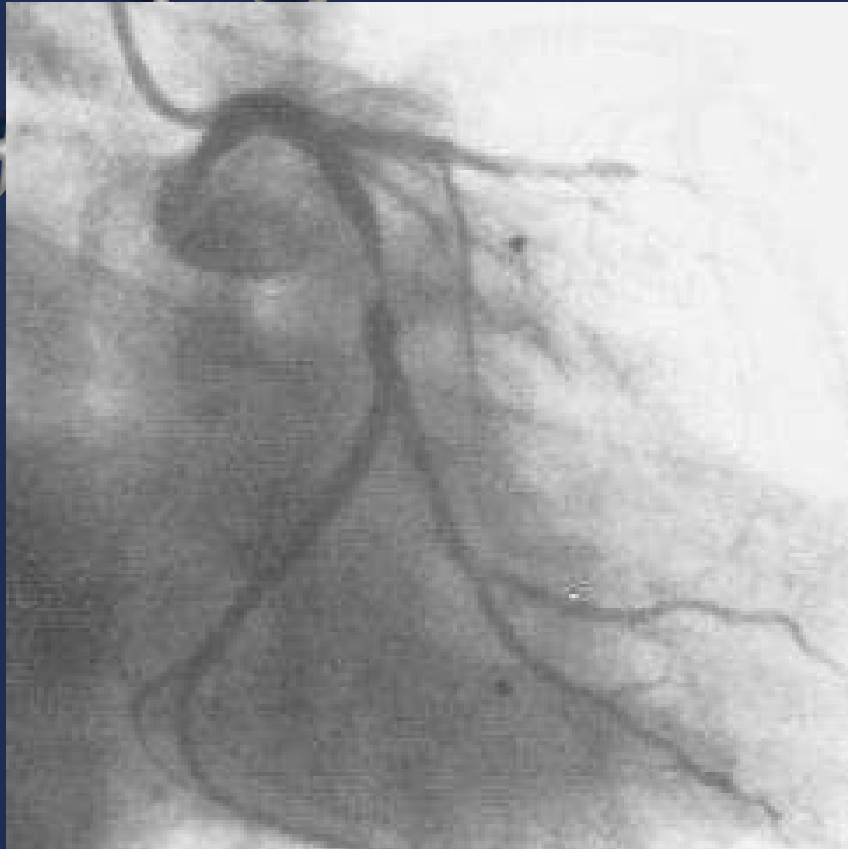
- A thorough history and physical examination is Essential.
- Remember that atherosclerosis does not only affect the coronary arteries.
- Check for signs of carotid stenosis & the status of the peripheral arteries



Coronary arteriogram and diagram in RAO projection of severe stenosis of the middle left anterior descending coronary artery

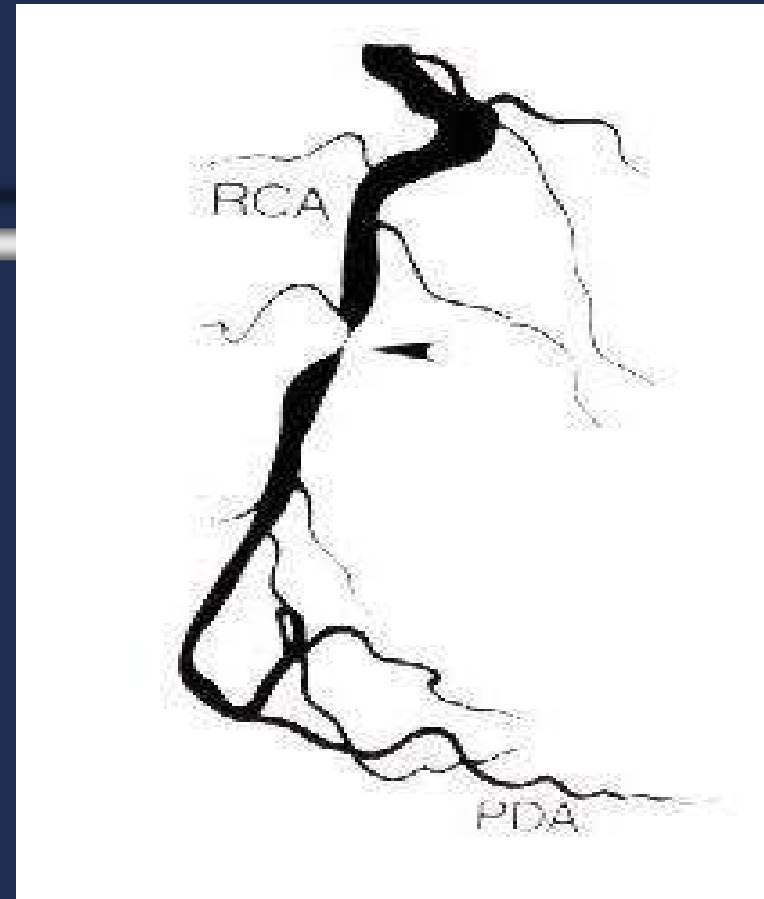
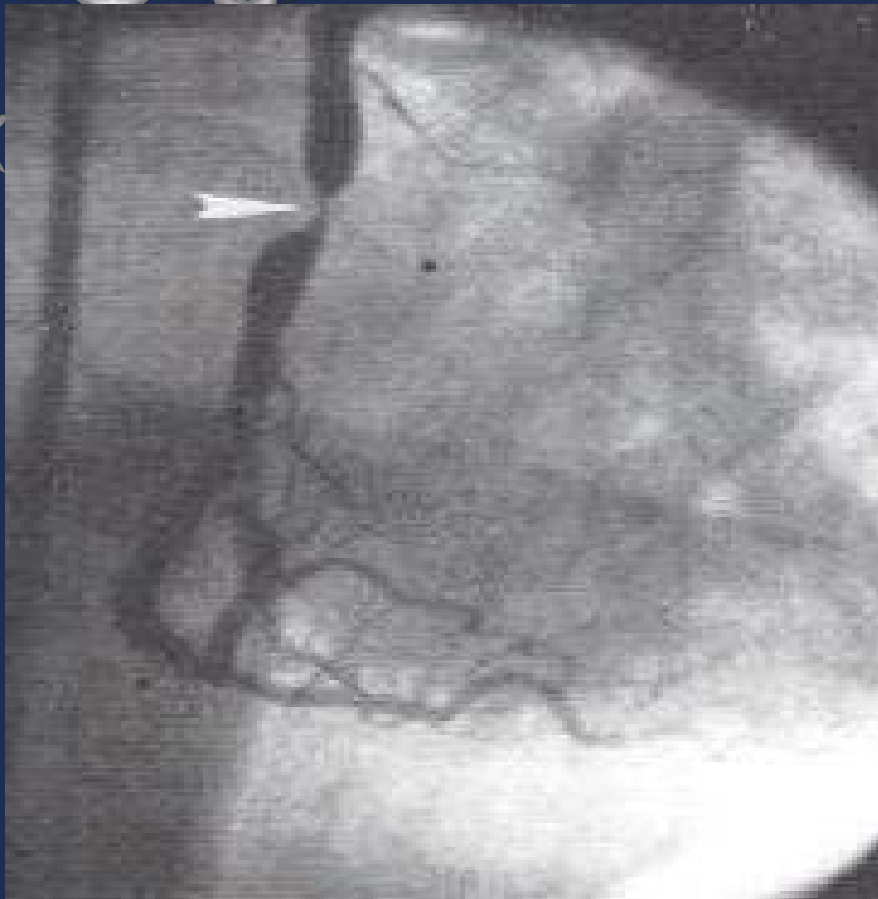
The Left Anterior Descending (LAD) showing the same stenosis in a LAO view.





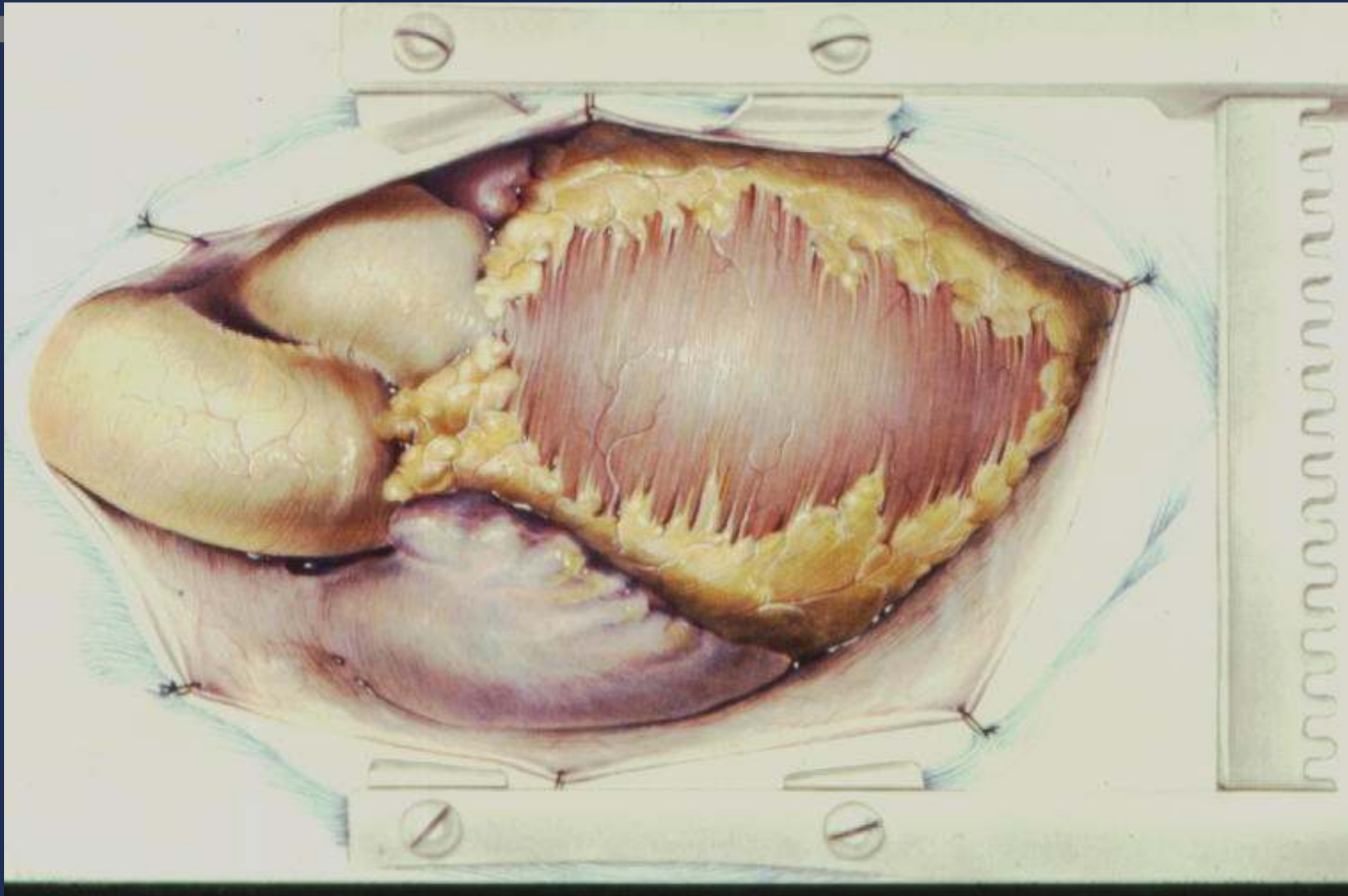
Middle of the Circumflex Coronary Artery lesion in a RAO caudal view

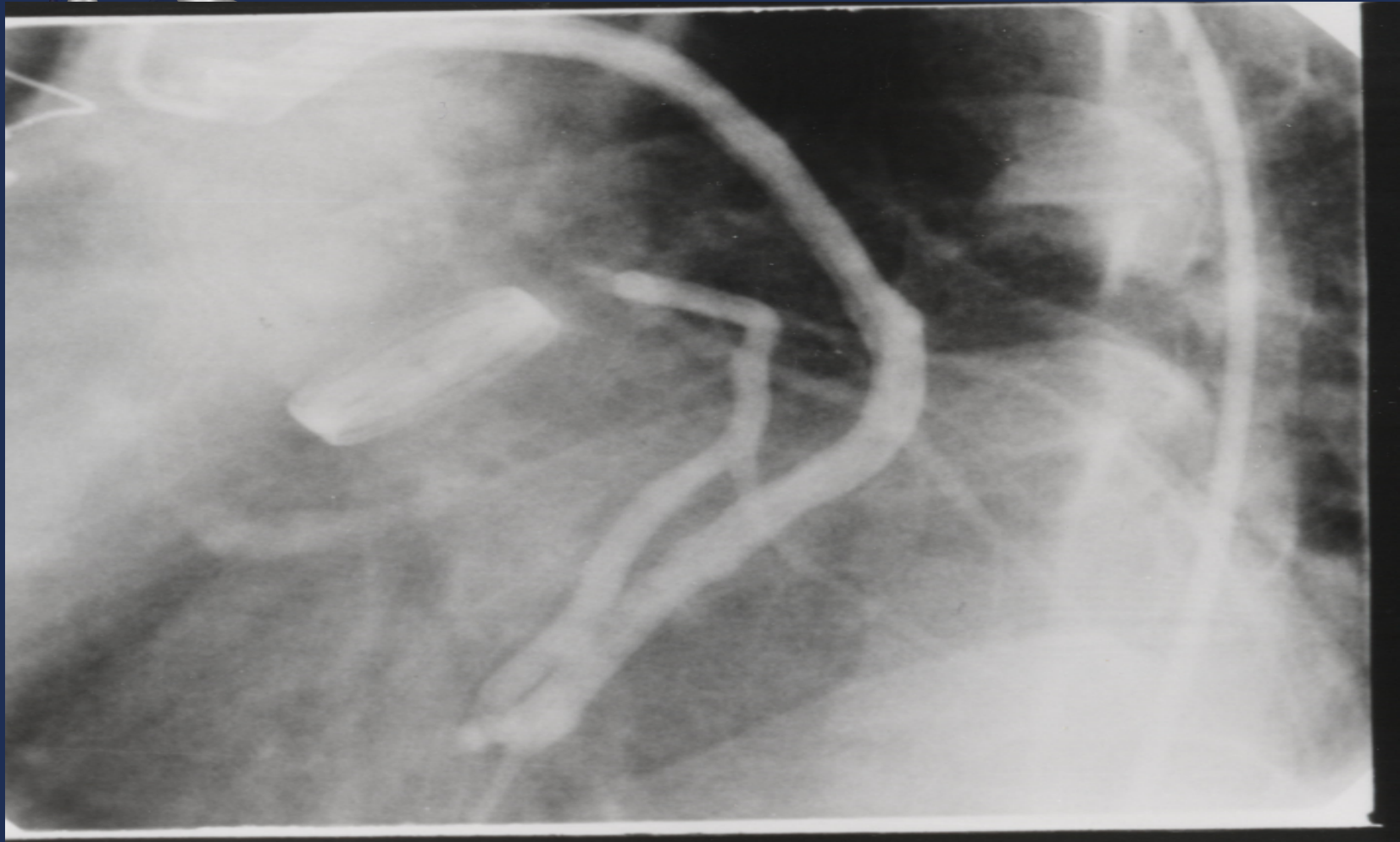




Mid-right coronary artery obstruction shown by the arrow in an RAO view

The Pericardium is opened and the Heart is exposed





Sometimes the pathology calls for both a valve replacement and coronary bypass graft.

(Alsaddique et al Asian Cardiovasc Thorac Ann 2003;11:169-70)

Prevention Is The Key !

- An ounce of Prevention is better than a pound of Cure
- The attention to coronary risk factors could help prevent Ischemic Heart Disease, the major killer

