

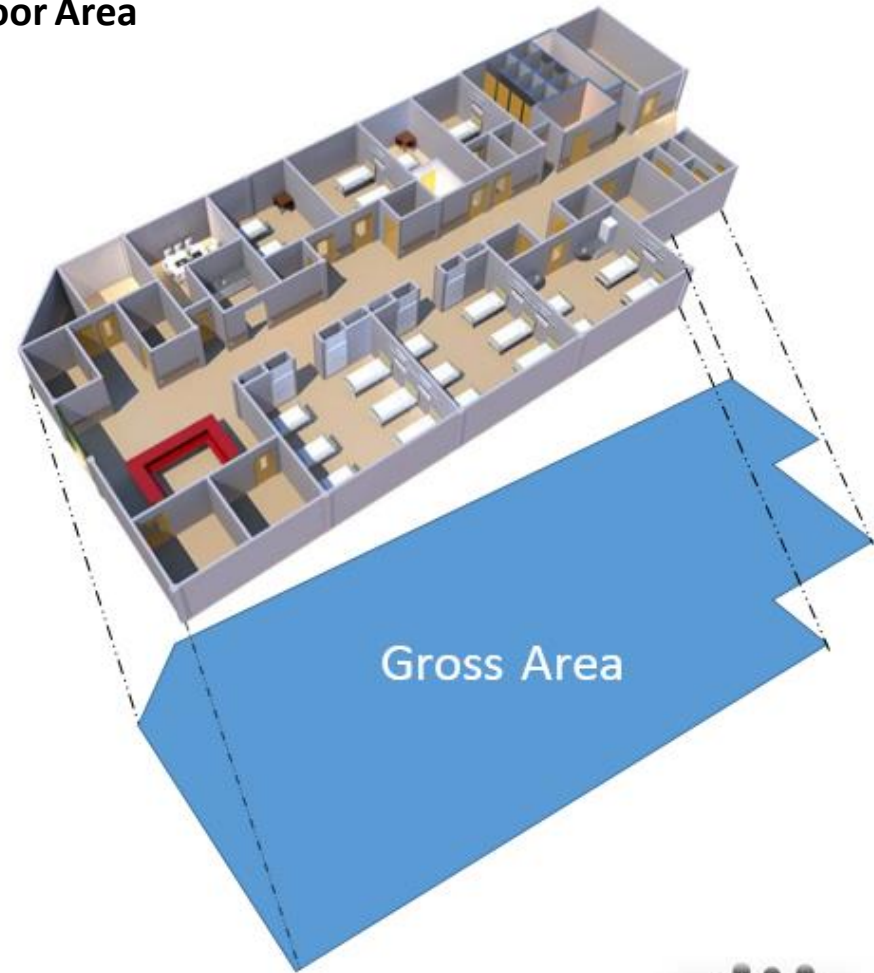
**Saudi Building Code**  
**Fire Protection Requirements**  
**SBC 801**



## Maximum Floor Area

**TABLE 8.4.1.2  
MAXIMUM FLOOR AREA ALLOWANCES PER OCCUPANT**

OCCUPANCY	FLOOR AREA IN SQ. METER. PER OCCUPANT
Agricultural building	28 gross
Aircraft hangars	47 gross
Airport terminal	
Baggage claim	1.9 gross
Baggage handling	28 gross
Concourse	9.3 gross
Waiting areas	1.4 gross
Assembly	
Gaming floors (keno, slots, etc.)	1 gross
Assembly with fixed seats	See Section 8.3.2.2.9
Assembly without fixed seats	
Concentrated (chairs only -- not fixed)	0.65 net
Standing space	0.47 net
Unconcentrated (tables and chairs)	1.4 net
Bowling centers, allow 5 persons for each lane including 15 feet of runway, and for additional areas	0.65 net
Business areas	9.3 gross
Courtrooms -- other than fixed seating areas	3.7 net
Dormitories	4.7 gross
Educational	
Classroom area	1.9 net
Shops and other vocational room areas	4.7 net
Exercise rooms	4.7 gross
H-S Fabrication and manufacturing areas	18.6 gross
Industrial areas	9.3 gross
Institutional areas	
Inpatient treatment areas	22.3 gross
Outpatient areas	9.3 gross
Sleeping areas	11.2 gross
Kitchens, commercial	18.6 gross
Library	
Reading rooms	4.7 net
Stack area	9.3 gross
Locker rooms	4.7 gross
Mercantile	



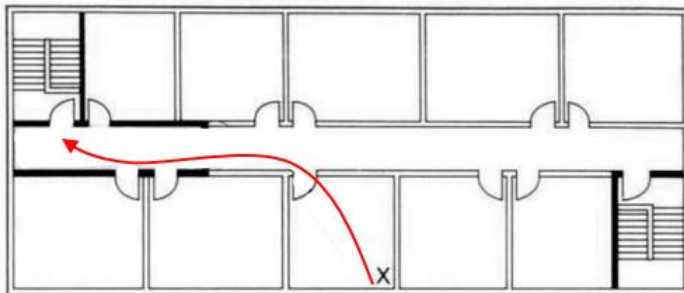
$$\text{Number of Occupants} = \frac{\text{Gross Area}}{11.2} =$$



## Travel Distance

TABLE 8.15.1  
EXIT ACCESS TRAVEL DISTANCE<sup>a</sup>

OCCUPANCY	WITHOUT SPRINKLER SYSTEM (meters)	WITH SPRINKLER SYSTEM (meters)
A, E, F-1, I-1, M, R, S-1	61	76.2 <sup>b</sup>
B	61	91.5 <sup>c</sup>
F-2, S-2, U	91.5	122 <sup>b</sup>
H-1	Not Permitted	23 <sup>c</sup>
H-2	Not Permitted	30.5 <sup>c</sup>
H-3	Not Permitted	45.7 <sup>c</sup>
H-4	Not Permitted	53.3 <sup>c</sup>
H-5	Not Permitted	61 <sup>c</sup>
I-2, I-3, I-4	45.7	61 <sup>c</sup>



Travel Distance

Maximum Travel Distance without Sprinkler = 45.7 meters

Maximum Travel Distance with Sprinkler = 61 meters

## Number of Exits

**TABLE 8.18.1**  
**MINIMUM NUMBER OF EXITS FOR OCCUPANT LOAD**

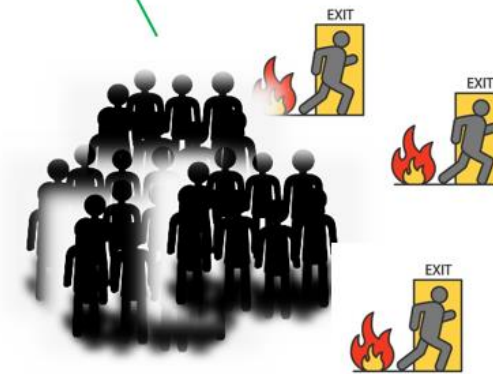
OCCUPANT LOAD	MINIMUM NUMBER OF EXITS
1-500	2
501-1,000	3
More than 1,000	4



1-500



More than 1,000

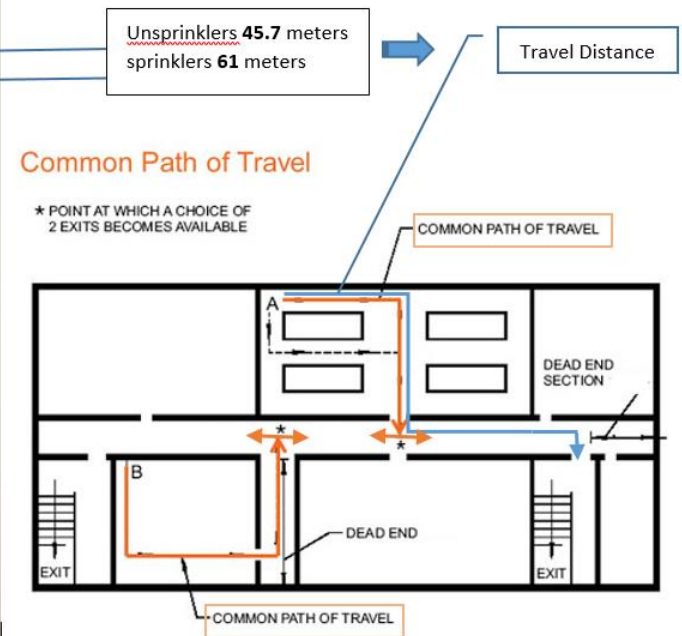


501 - 1,000

## Common Path, Dead-End and Travel Distance

**TABLE 8.26.17.2  
COMMON PATH, DEAD-END AND TRAVEL DISTANCE LIMITS  
(by occupancy)**

OCCUPANCY	COMMON PATH LIMIT		DEAD-END LIMIT		TRAVEL DISTANCE LIMIT	
	Unsprinklered (meters)	Sprinklered (meters)	Unsprinklered (meters)	Sprinklered (meters)	Unsprinklered (meters)	Sprinklered (meters)
Group A	6.1/23 <sup>a</sup>	6.1/23 <sup>a</sup>	6.1 <sup>b</sup>	6.1 <sup>b</sup>	61	76.2
Group B	23	30.5	15.3	15.3	61	76.2
Group E	23	23	6.1	6.1	61	76.2
Groups F-1, S-1 <sup>d</sup>	23	30.5	15.3	15.3	61	76.2
Groups F-2, S-2 <sup>d</sup>	23	30.5	15.3	15.3	91.5	122
Group H-1	7.6	7.6	0	0	23	23
Group H-2	15.3	30.5	0	0	23	30.5
Group H-3	15.3	30.5	6	6.1	30.5	45.7
Group H-4	23	23	6.1	6.1	45.7	53.3
Group H-5	23	23	6.1	15.3	45.7	61
Group I-1	23	23	6.1	6.1	61	76.2
Group I-2 (Health Care)	NR	NR	NR	NR	45.7	61 <sup>e</sup>
Group I-3 (Detention and Correctional—Use Conditions II, III, IV, V)	30.5	30.5	NR	NR	45.7 <sup>e</sup>	61 <sup>e</sup>
Group I-4 (Day Care Centers)	NR	NR	6.1	6.1	61	76.2
Group M (Covered Mall)	23	30.5	15.3	15.3	61	122
Group M (Mercantile)	23	30.5	15.3	15.3	61	76.2
Group R-1 (Hotels)	23	23	15.3	15.3	61	76.2
Group R-2 <sup>a</sup> (Apartments)	23	23	15.3	15.3	61	76.2
Group R-3 <sup>a</sup> (One and Two-Family); Group R-4 (Residential Care/Assisted Living)	NR	NR	NR	NR	NR	NR
Group U		23	6.1	6.1	61	76.2



NR: No requirements