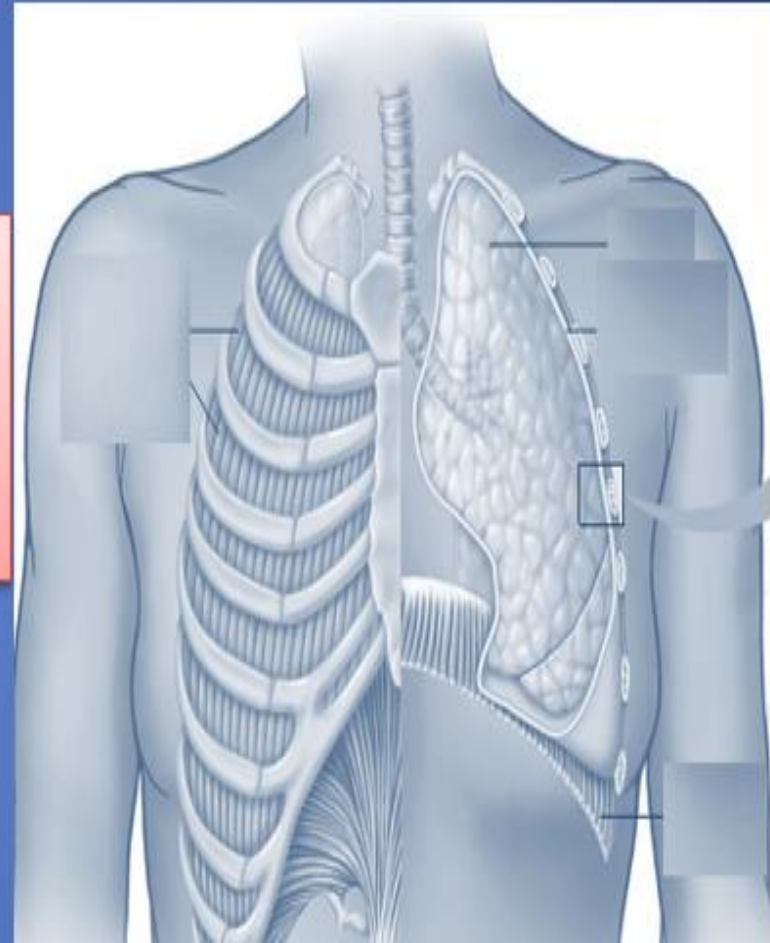


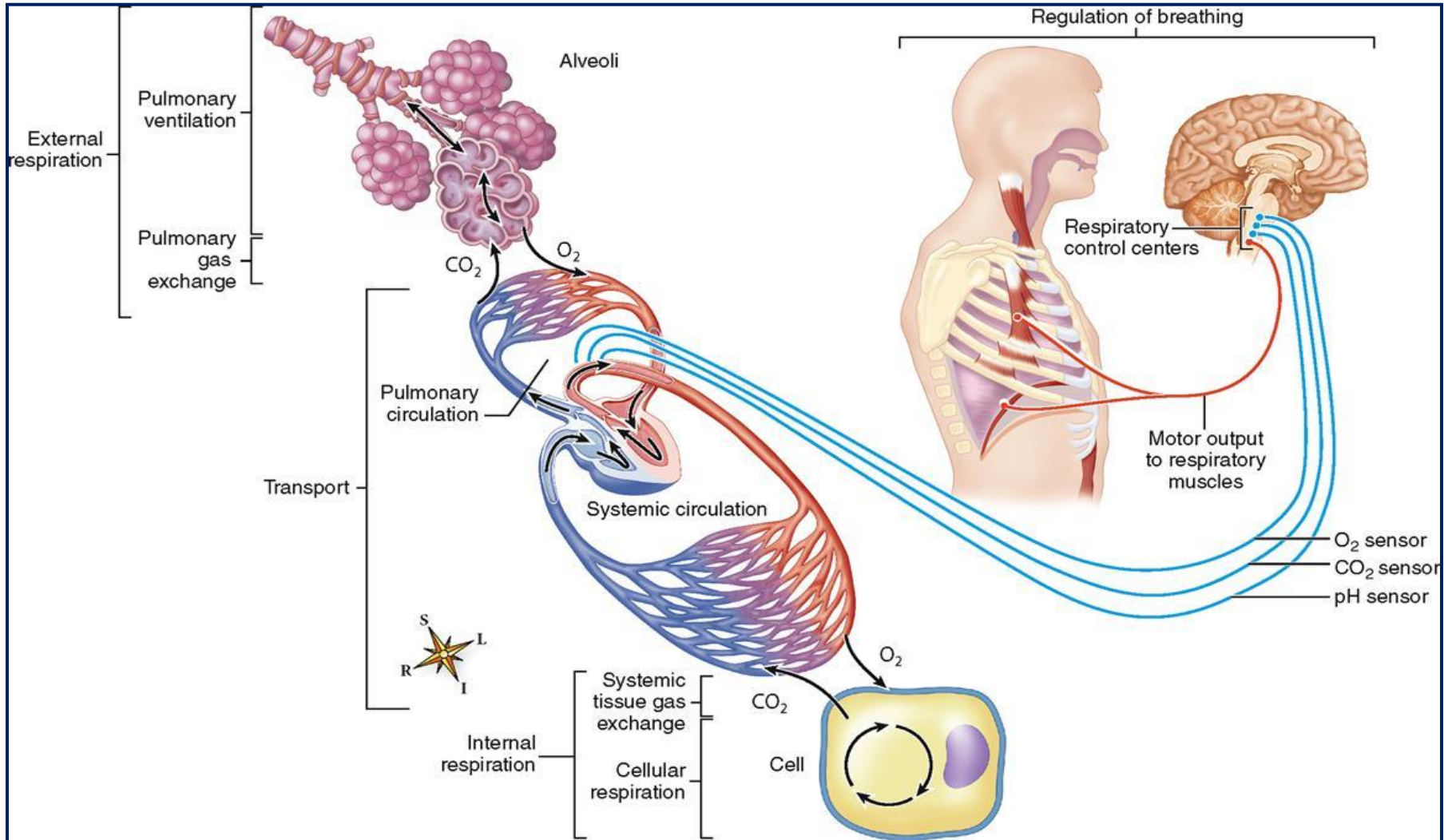
Regulation of Respiration



Need to Review

- **Structure and function of Respiratory System**
- **Mechanism of Inspiration & Expiration**
- **Gas Transport in the Blood**
- **Gas Exchange**

The overall processes of External Respiration



Control of rate and depth of respiration

- Arterial PO₂:

When PO₂ is VERY low (Hypoxia): ventilation increases.

- Arterial PCO₂:

The most important regulator of ventilation is PCO₂, small increases in PCO₂: greatly increases ventilation.

- Arterial pH:

As hydrogen ions increase (acidosis), alveolar ventilation increases.

CONTROL OF VENTILATION

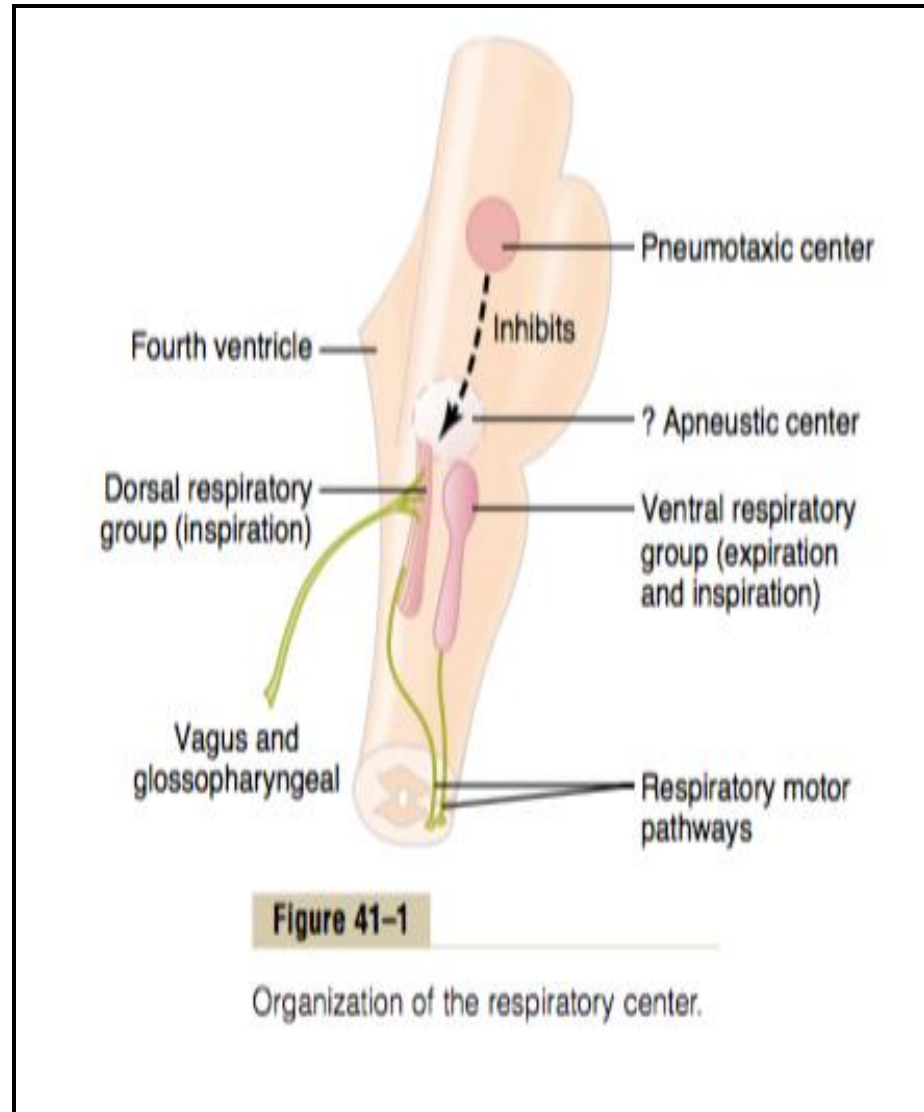
➤ Several mechanisms are involved which can be grouped into two main categories which are closely integrated:-

1- Nervous control mechanism.

2- Chemical control mechanism.

RESPIRATORY NEURONAL CENTER

- Composed of several groups of neurons.
- Located in the entire length of the **medulla** and **pons** of the **Brainstem**.
- Can be divided into four major groups of neurons:-
 - 1-Dorsal respiratory group.
 - 2-Ventral respiratory group.
 - 3-The apneustic center.
 - 4-The pneumotaxic center.



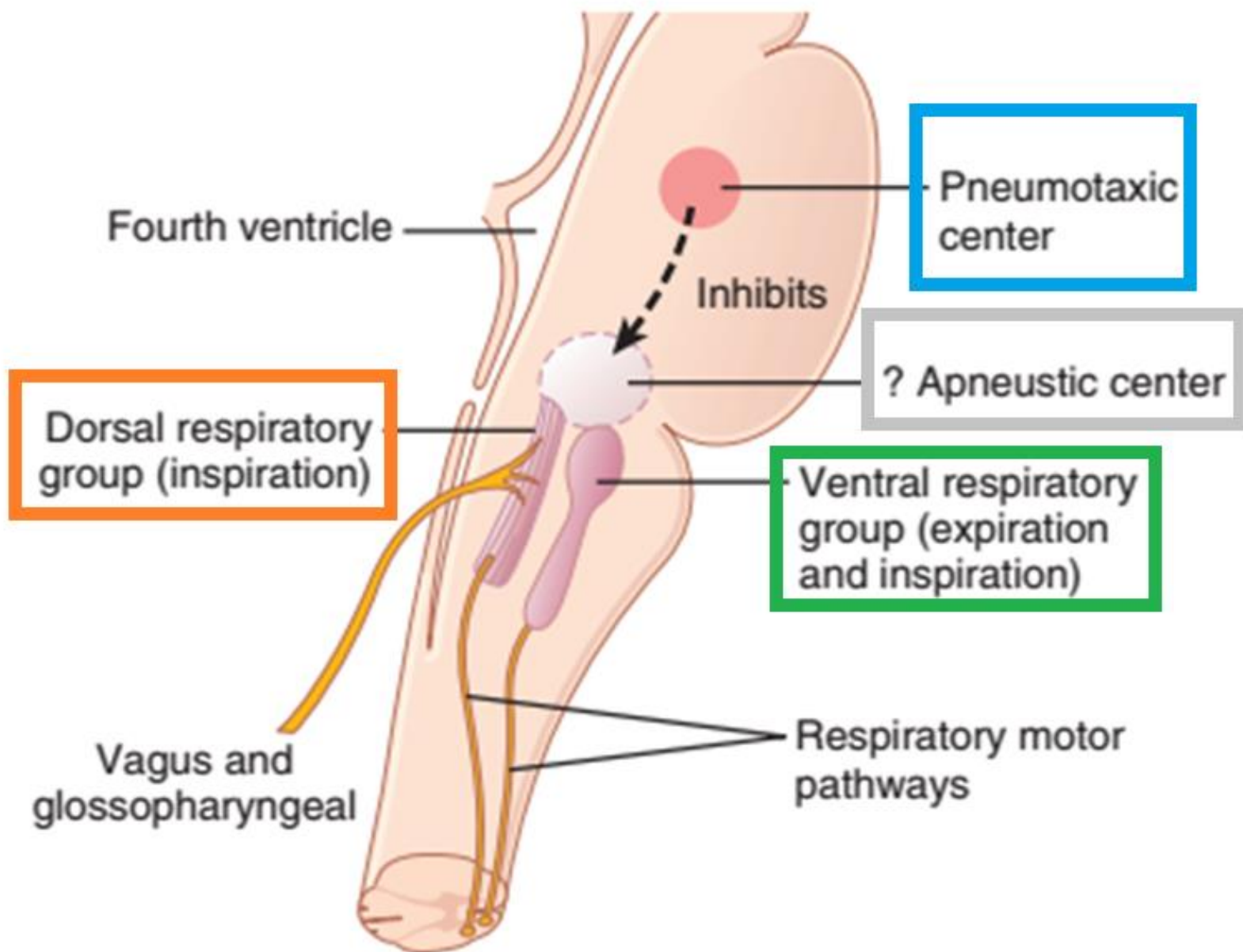
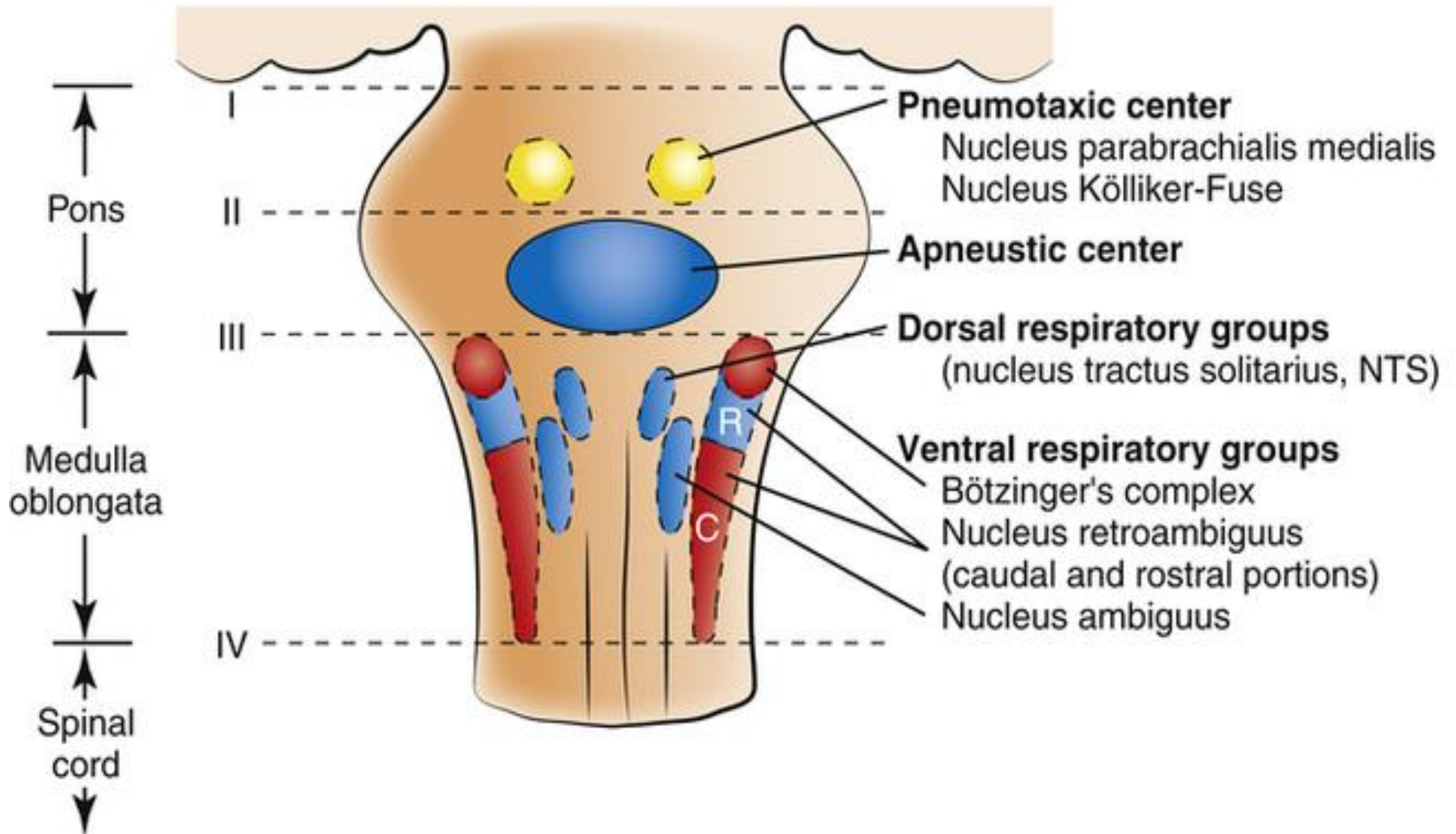


Figure 42-1. Organization of the respiratory center.

- Inspiratory neurons
- Expiratory neurons
- Inspiratory and expiratory neurons



Medullary Respiratory centers

1. Inspiratory area (Dorsal Respiratory Group)-DRG:

-Determines basic rhythm of breathing (rhythmicity center).

-Causes contraction of diaphragm and external intercostals.

-The rhythmicity center received impulses from:

1-Higher brain centers.

2-Centers in the brain stem (medulla and pons).

3-Special receptors (respiratory reflexes).

-The rhythmicity center sends excitatory impulses via the intercostal and phrenic nerves to the external intercostal muscles and diaphragm.

-The medullary respiratory center stimulates basic inspiration for about 2 seconds and then basic expiration for about 3 seconds (5sec/breath = 12breaths/min).

2. Expiratory area (Ventral Respiratory Group)-VRG:

- Although it contains both inspiratory and expiratory neurons, It is inactive during normal quiet breathing.
- Activated by inspiratory area during forceful breathing.
- Causes contraction of the internal intercostals and abdominal muscles (mainly expiratory).

Normally, ventral group neurons are inactive during quiet breathing and become active during forced breathing. During forced breathing, these neurons stimulate both inspiratory muscles and expiratory muscles.

Pontine Respiratory centers

1. Apneustic area:

Stimulates inspiratory area of medulla to prolong inhalation. Therefore, slow respiration and prolonged respiratory cycles will result if it is stimulated. It receives inhibitory impulses from the sensory vagal fibers and inhibitory impulses from the pneumotaxic center.

(Apneustic center increases **depth of inspiration**)

2. Pneumotaxic area:

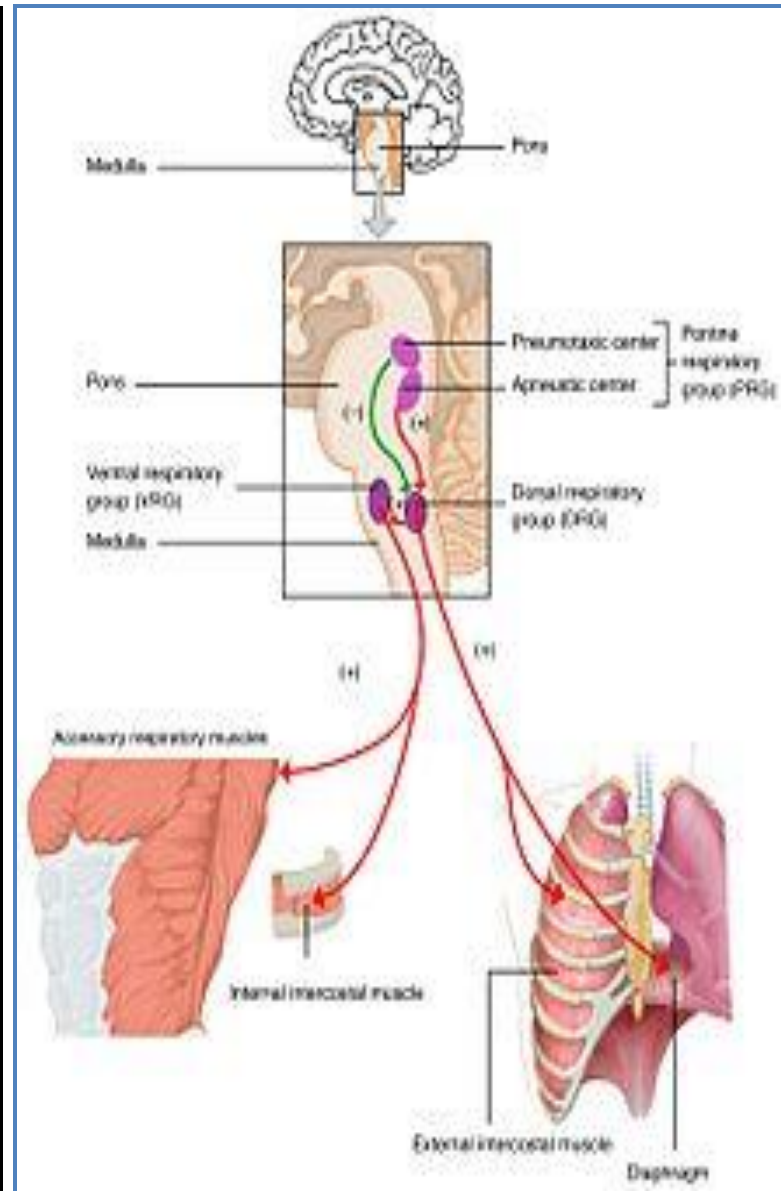
It transmits inhibitory impulses to the apneustic center and to the inspiratory area to switch off inspiration.

Therefore, breathing is more rapid when pneumotaxic area is active.

(pneumotaxic center influences the switching between inspiration and expiration. Pneumotaxic center increases respiratory rate by reducing the duration of inspiration.)

Hering-Breuer inflation reflex

- When the lung becomes overstretched (tidal volume is about 1.5 L), stretch receptors located in the wall of bronchi and bronchioles transmit signals through vagus nerve to DRG producing effect similar to pneumotaxic center stimulation.
- Switches off inspiratory signals and thus stops further inspiration .
- This reflex also increases the rate of respiration as does the pneumotaxic center.
- This reflex appears to be mainly a protective mechanism for preventing excess lung inflation



CHEMICAL CONTROL OF VENTILATION

The rhythmicity center is affected by chemical changes in the blood via two types of chemoreceptors:-

1-Peripheral chemoreceptors.

2-Central chemoreceptors.

Chemical Control of Respiration

Peripheral and central chemoreceptors

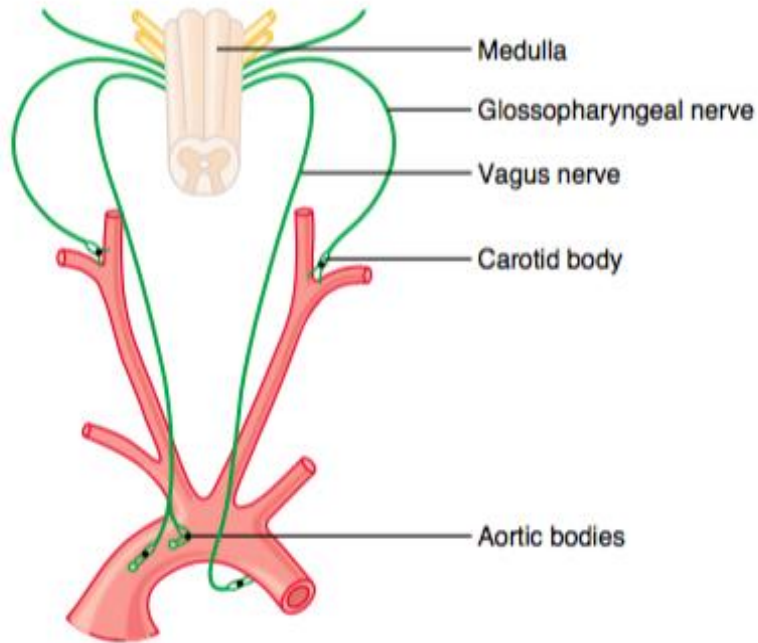


Figure 41-4

Respiratory control by peripheral chemoreceptors in the carotid and aortic bodies.

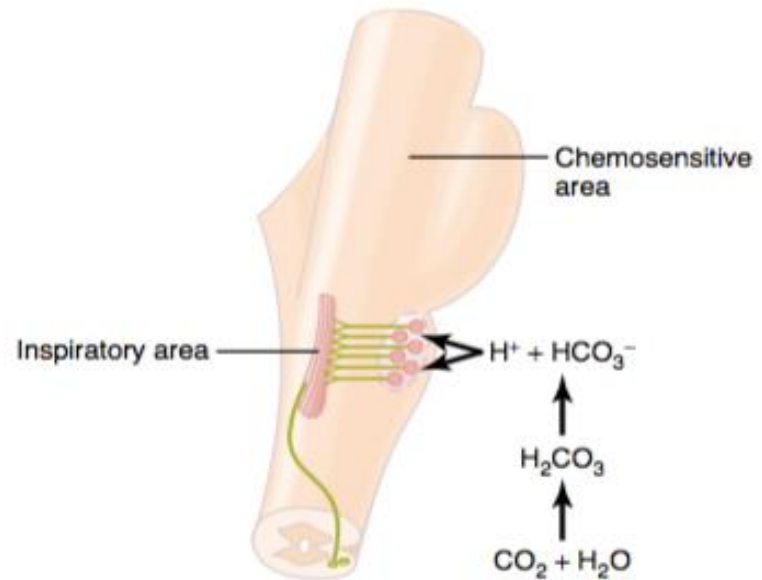


Figure 41-2

Stimulation of the *brain stem inspiratory area* by signals from the *chemosensitive area* located bilaterally in the medulla, lying only a fraction of a millimeter beneath the ventral medullary surface. Note also that hydrogen ions stimulate the chemosensitive area, but carbon dioxide in the fluid gives rise to most of the hydrogen ions.

Peripheral chemoreceptors

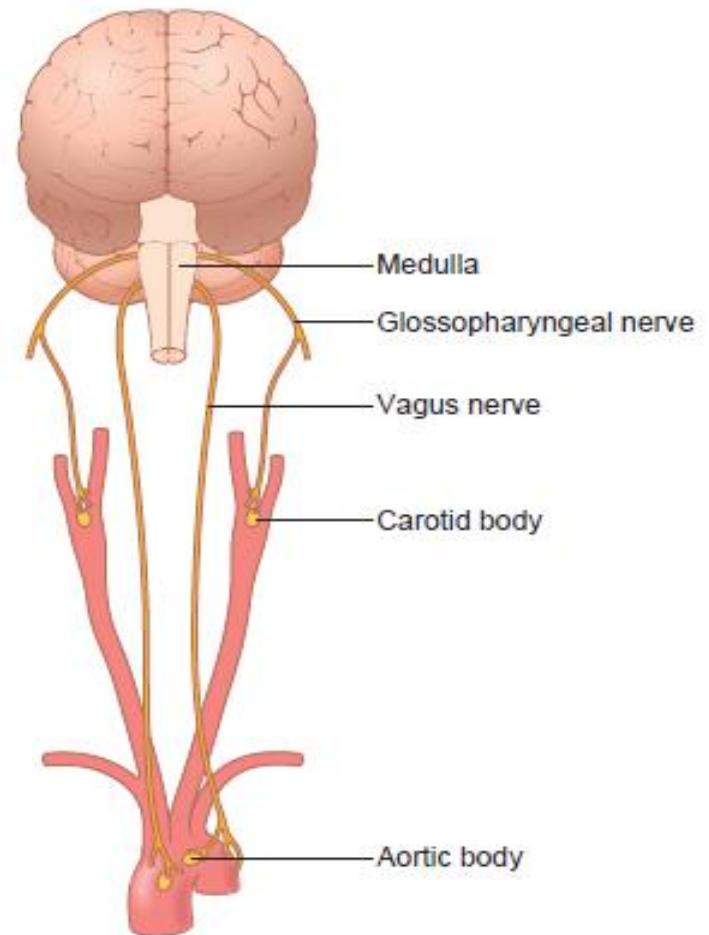
Central chemoreceptors

Peripheral chemoreceptors:

- Located mainly in the carotid and aortic bodies, but may be found anywhere in the circulatory system.
- When stimulated, send excitatory impulses to the rhythmicity center (via glossopharyngeal and vagus nerves).
- Highly sensitive to changes in arterial PO_2 and to a lesser extent to PCO_2 and pH.
- Fall of PO_2 , rise in PCO_2 and fall of pH, stimulate the chemoreceptors to **increase ventilation**.

Respiratory control by peripheral chemoreceptors in carotid and aortic bodies

- Normal PO_2 , PCO_2 and pH, low grade of tonic activity in the nerves.
- $\downarrow PCO_2$ and $\uparrow pH$ causes low tonic activity which cause **decrease ventilation**
- In metabolic acidosis:
 $\downarrow pH$ causes **increase in ventilation** to wash out CO_2 and to bring pH to normal.
- In metabolic alkalosis:
 $\uparrow pH$ causes decrease ventilation, CO_2 retained in the blood to compensate.



Peripheral Chemoreceptor System Activity— Role of Oxygen in Respiratory Control

- Most of the chemoreceptors are in the carotid bodies. However, a few are also in the aortic bodies.
- When oxygen concentration in the arterial blood falls below normal, the chemoreceptors become strongly stimulated.
- Impulse rate is particularly sensitive to changes in arterial P_{O_2} in the range of 60 down to 30 mm Hg.
- Under these conditions, low arterial P_{O_2} obviously drives the ventilatory process quite strongly.

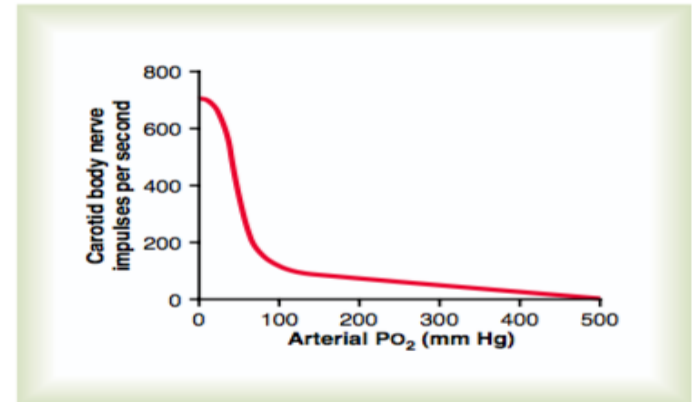


Figure 41-5

Effect of arterial P_{O_2} on impulse rate from the carotid body of a cat.

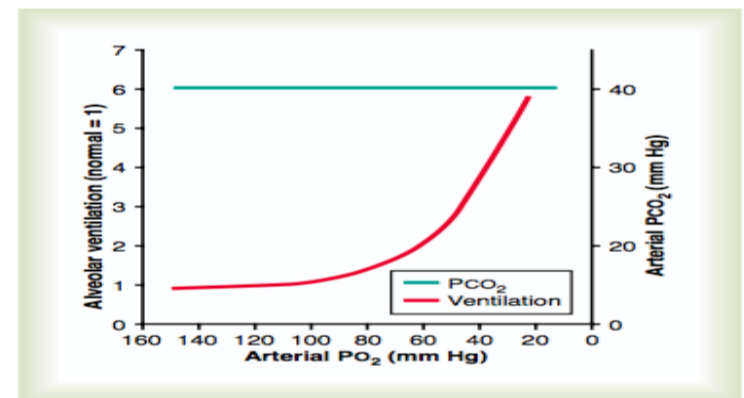


Figure 41-6

The lower curve demonstrates the effect of different levels of arterial P_{O_2} on alveolar ventilation, showing a sixfold increase in ventilation as the P_{O_2} decreases from the normal level of 100 mm Hg to 20 mm Hg. The upper line shows that the arterial P_{CO_2} was kept at a constant level during the measurements of this study; pH also was kept constant.

CENTRAL CHEMORECEPTORS

- Most probably located on the ventrolateral surface of **medulla oblongata** (which is bathed with cerebrospinal fluid)
- Highly sensitive to **the hydrogen ion concentration** of the CSF (Cerebrospinal fluid).
- evoked by arterial PCO_2 (CO_2 can freely cross the blood-brain barrier(BBB) into CSF, while BBB is relatively impermeable to H^+ and HCO_3^- ions)

Effect of CO₂ on central chemoreceptors

Although **carbon dioxide** has little direct effect in stimulating the neurons in the chemosensitive area, **it does have a potent indirect effect.** It does this by reacting with the water of the tissues to form carbonic acid, which dissociates into hydrogen and bicarbonate ions; **the hydrogen ions then have a potent direct stimulatory effect on respiration.**

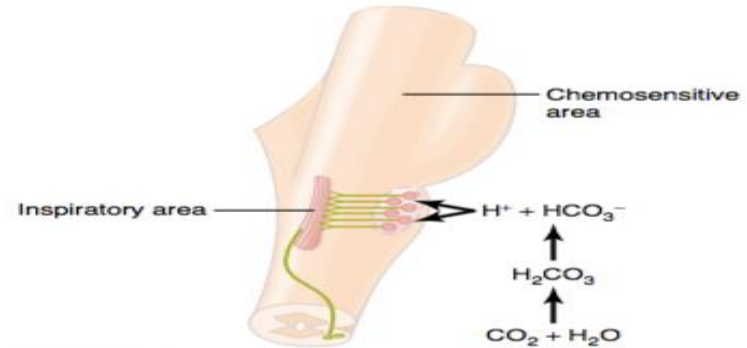


Figure 41-2

Stimulation of the *brain stem inspiratory area* by signals from the *chemosensitive area* located bilaterally in the medulla, lying only a fraction of a millimeter beneath the ventral medullary surface. Note also that hydrogen ions stimulate the chemosensitive area, but carbon dioxide in the fluid gives rise to most of the hydrogen ions.

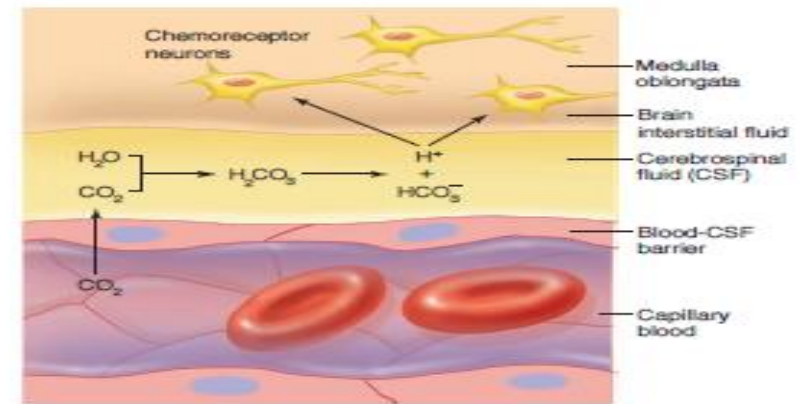


Figure 16.29 How blood CO₂ affects chemoreceptors in the medulla oblongata. An increase in blood CO₂ stimulates breathing indirectly by lowering the pH of blood and cerebrospinal fluid (CSF). This figure illustrates how a rise in blood CO₂ increases the H⁺ concentration (lowers the pH) of CSF and thereby stimulates chemoreceptor neurons in the medulla oblongata.

Why does CO₂ have a more potent effect in stimulating chemosensitive neurons than do blood H⁺ ions?

Blood-brain barrier is nearly impermeable to H⁺ ions, but CO₂ passes this barrier very easily. When the blood PCO₂ increases, so does the PCO₂ of both the interstitial fluid of the medulla and the CSF. In these fluids, the CO₂ reacts with the water to form new H⁺ ions. More H⁺ ions are released into the respiratory chemosensitive sensory area of the medulla when the blood CO₂ concentration increases than when the blood H⁺ ion increases. For this reason, respiratory center activity is increased very strongly by changes in blood CO₂.

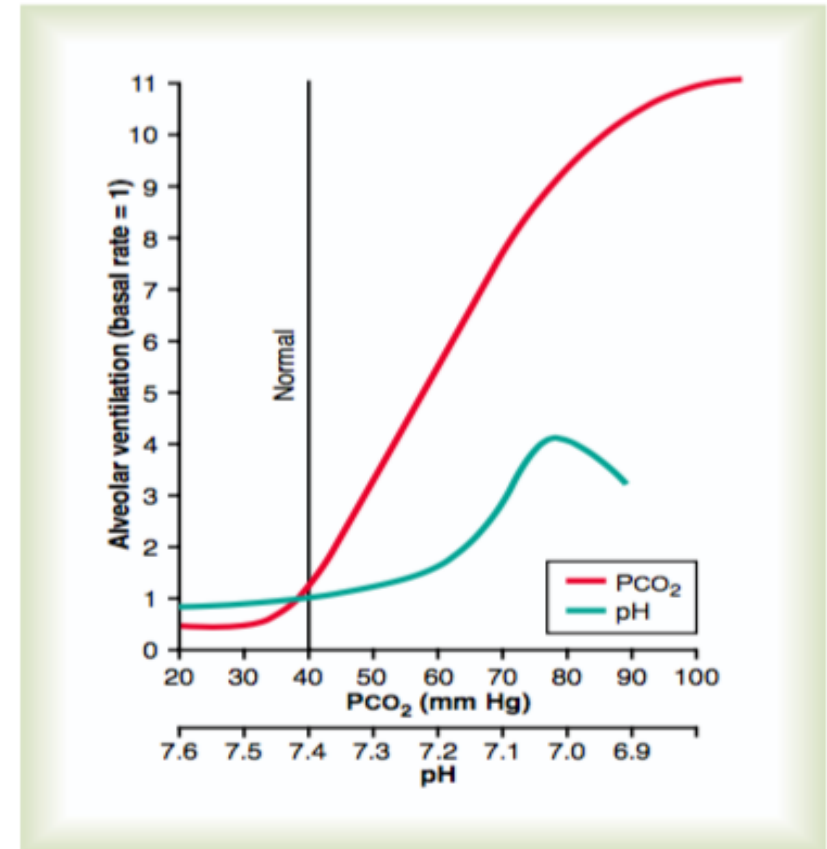
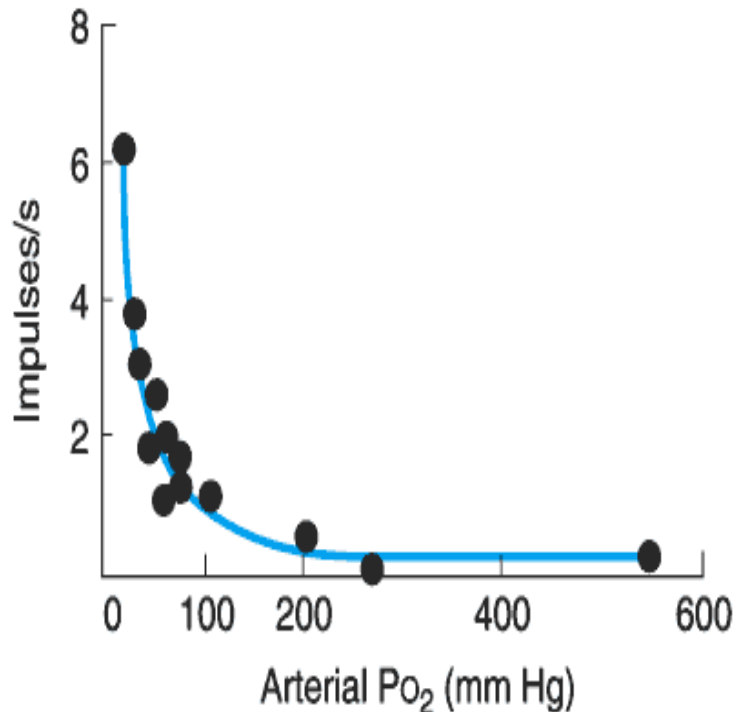


Figure 41-3

Effects of increased arterial blood PCO₂ and decreased arterial pH (increased hydrogen ion concentration) on the rate of alveolar ventilation.

Summary of Chemoreceptor Control of Breathing

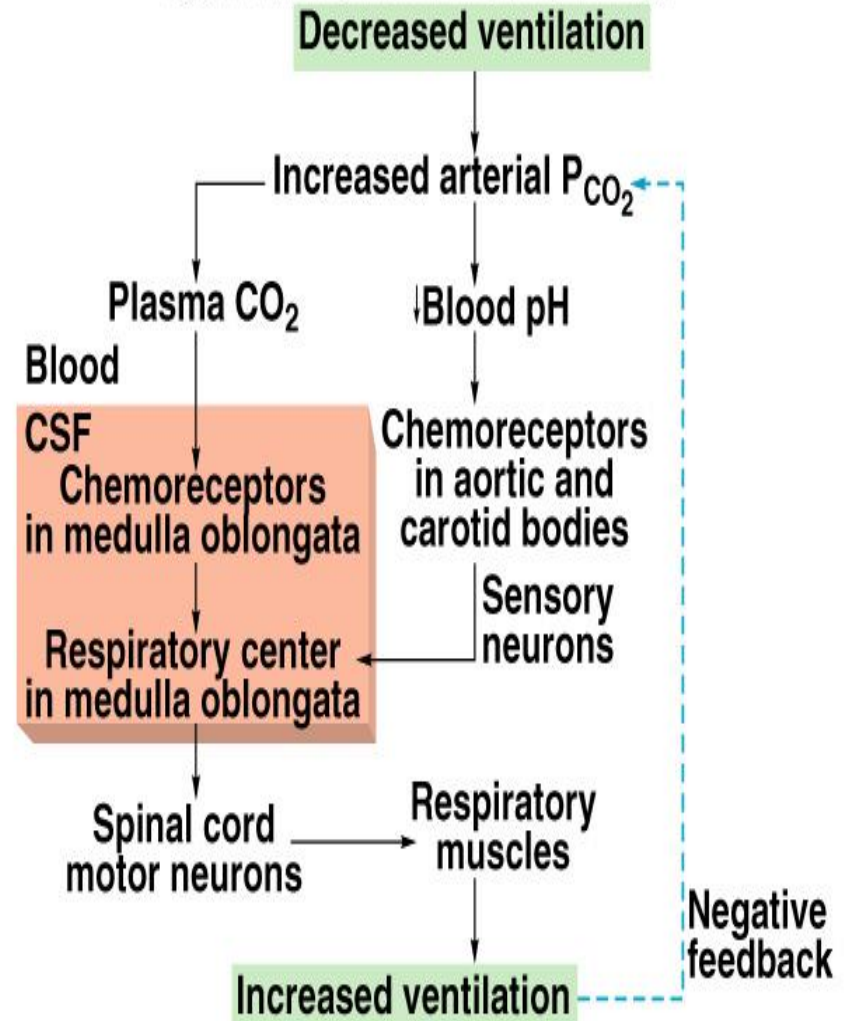
Figure 36-6.



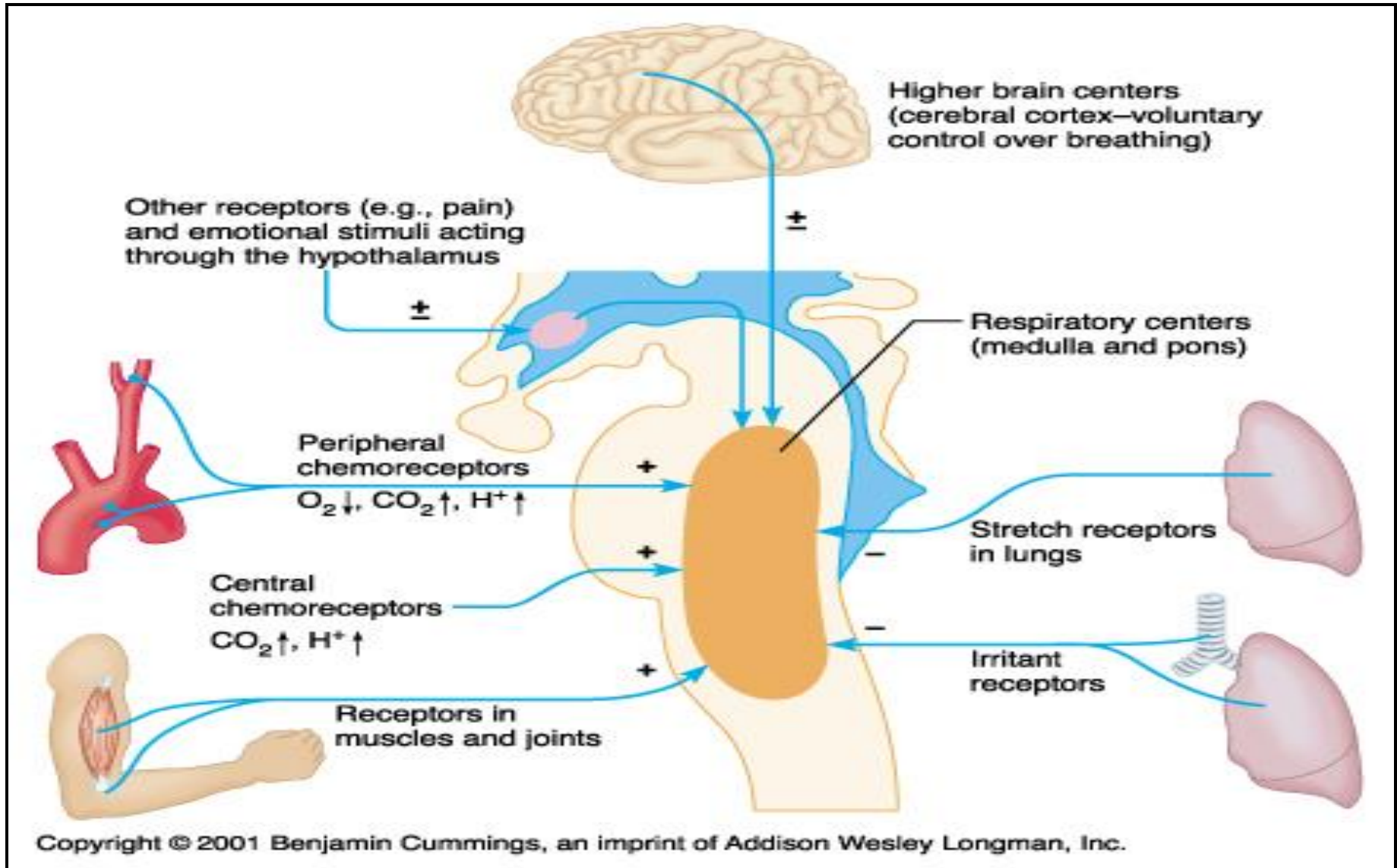
Copyright ©2006 by The McGraw-Hill Companies, Inc.
All rights reserved.

Change in the rate of discharge of a single afferent fiber from the carotid body when arterial P_{O_2} is reduced. (Courtesy of S Sampson.)

Copyright © The McGraw-Hill Companies, Inc. Permission required for reproduction or display.



Other Factors Influencing Respiration



Cont. factors influencing respiration

- Effect of irritant receptors in the airways:

The epithelium in the trachea, bronchi, and bronchioles is supplied by irritant receptors that are stimulated by irritants that enters the respiratory airways causing coughing, sneezing and bronchoconstriction in bronchial asthma and emphysema.

- Function of lung J receptors:

few receptors in the wall of the alveoli in juxta position to the pulmonary capillaries. They are stimulated especially when the pulmonary capillary becomes engorged by blood or when pulmonary edema occurs e.g. in CHF, their stimulation cause the patient feels dyspnea and increase in breathing rate.

Summary of factors affecting respiration

