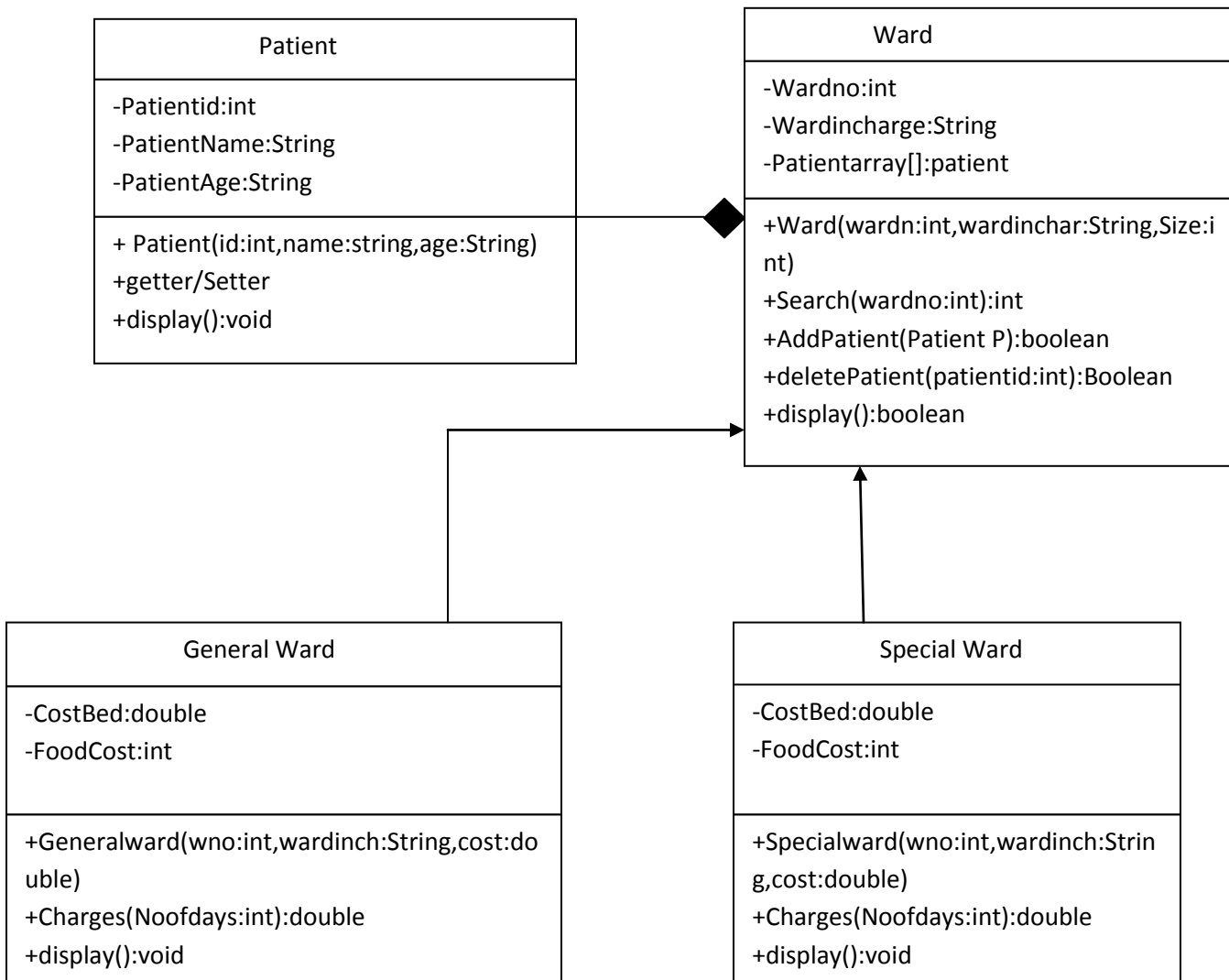


KSU / CCIS / CS DEPARTMENT

Lab No: 9

Exception Handling

Consider the following class diagram



General Ward Class:

Charges: In the charges make the calculation

Cost of Bed Per day: 30000 SR

Cost of Food per day: 15000 SR

Cost per day (bed): 30000/noofdays

Cost per day (food): 15000/noofdays

Special Ward Class:

Charges: In the charges make the calculation

Cost of Bed Per day: 200 SR

Cost of Food per day: 100 SR

Cost per day (bed): 60000/noofdays

Cost per day (food): 30000/noofdays

check for (dividebyzero Exception)

Ward Class.

The **Ward** class implements the following methods:

- The constructor `Ward(wardn:int,wardinchar:String,Size:int)` and throws an exception when the array is created with a negative size. (**NegativeArraySizeException**)
- The method `search ()` to search an account and returns `-1` if it is not founded and its index otherwise.
- The method `AddPatient()` to add a new Patient and throws an exception when an illegal index term in the array has been accessed. (**ArrayIndexOutOfBoundsException**)
- The method `deletePatient ()` to remove an Patient and throws an exception when the method has been passed an illegal or inappropriate argument. (**IllegalArgumentException**)

Question

Implement the UML diagram presented previously and write a main program to show all the methods