

King Saud University

College of Engineering

IE – 462: “Industrial Information Systems”

Spring – 2019 (2nd Sem. 1439-40H)

Chapter 3

Data Modeling and Design – p2 – E-R Diagram - ii

Prepared by: Ahmed M. El-Sherbeeney, PhD

Lesson Overview

- Introduction – (p1)
- **E-R Diagram** – (p2)
- Case Studies – (p3)

Lesson Overview

- **E-R Diagram – (part-i)**
 - **Introduction to E-R Modeling**
 - Introduction
 - Entities
 - Attributes
 - Candidate Keys and Identifiers
 - Other Attribute Types
 - Relationships

Lesson Overview

- E-R Diagram – (part-ii)
 - **Conceptual Data Modeling and the E-R Model**
 - [Degree of a Relationship](#)
 - [Unary Relationships](#)
 - [Binary Relationships](#)
 - [Ternary Relationships](#)
 - [Cardinalities in Relationships](#)
 - [Minimum and Maximum Cardinalities](#)
 - [Alternative Cardinality System](#)
 - [Semantic Net Diagram](#)
 - [Naming Relationships](#)

Lesson Overview

- **E-R Diagram – (part-ii)**
 - **Conceptual Data Modeling and the E-R Model**
 - **Associative Entities**
 - **Supertypes and Subtypes**
 - **Business Rules**

CONCEPTUAL DATA MODELING AND THE E-R MODEL



Degree of a Relationship



Degree of a Relationship

- Degree of a relationship is a measure of the number of entities sharing the same association
- There are four cases:
 - **unary** relationships
 - **binary** relationships
 - **ternary** relationships
 - **n-ary** relationships

Degree of a Relationship

Unary Relationships

- A unary relationship is a relationship between the instances of one entity type (i.e. *within a single entity*)
 - i.e. the entity has a relationship with itself
 - aka *recursive relationship*

- Examples:

- Is_married_to: *one-to-one* relationship between instances of PERSON entity
- Manages: *one-to-many* relationship between instances of EMPLOYEE entity (used to identify employees who report to a particular manager and vice versa)

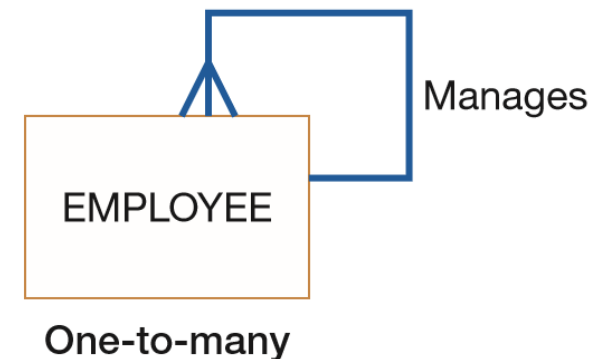
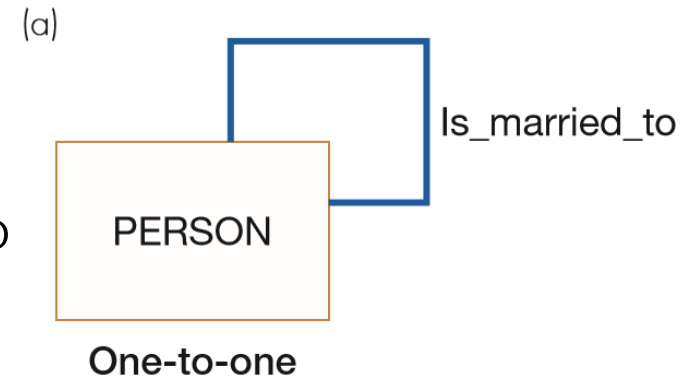


FIGURE 8-11

Examples of relationships of different degrees

(a) Unary relationships

Degree of a Relationship

Unary Relationships (cont.)

- [Next slide](#): example of another common unary relationship: **bill-of-materials structure**
 - Many manufactured products are made of subassemblies
 - Subassemblies in turn are composed of other subassemblies and parts, and so on
 - Figure 8-12a: shows this as *many-to-many unary* relationship
 - relationship name: Has_components
 - attribute Quantity: property of the relationship; indicates # of each component that is contained in a given assembly
 - Figure 8-12b: 2 occurrences of this structure
 - easy to see associations are in fact many-to-many
 - e.g. TX100 consists of items BR450 (Qty 2) & DX500 (Qty 1)
 - also, some components are used in several higher-level assemblies (e.g. WX240 used in item MX300 & WX340)

Degree of a Relationship

Unary Relationships (cont.)

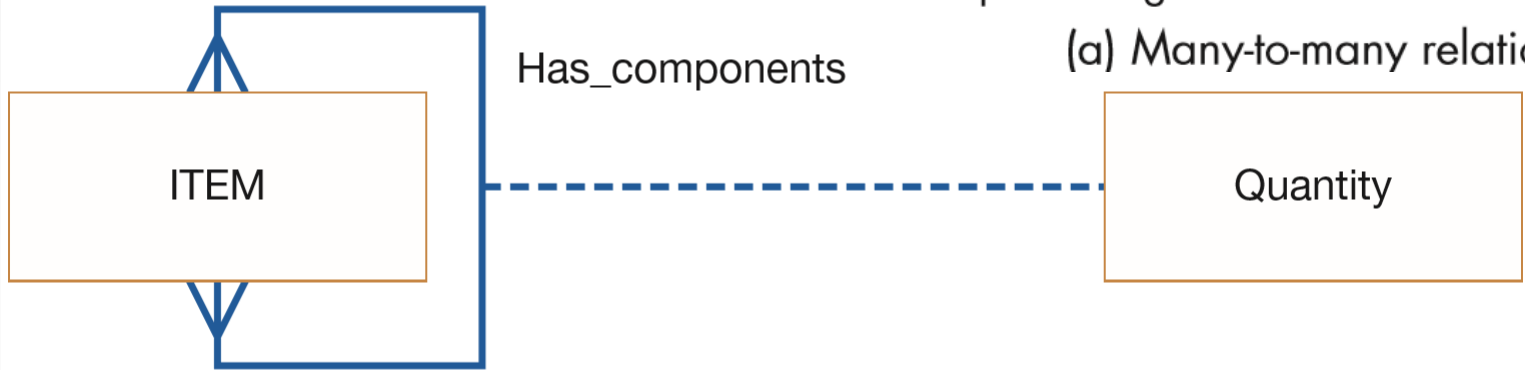
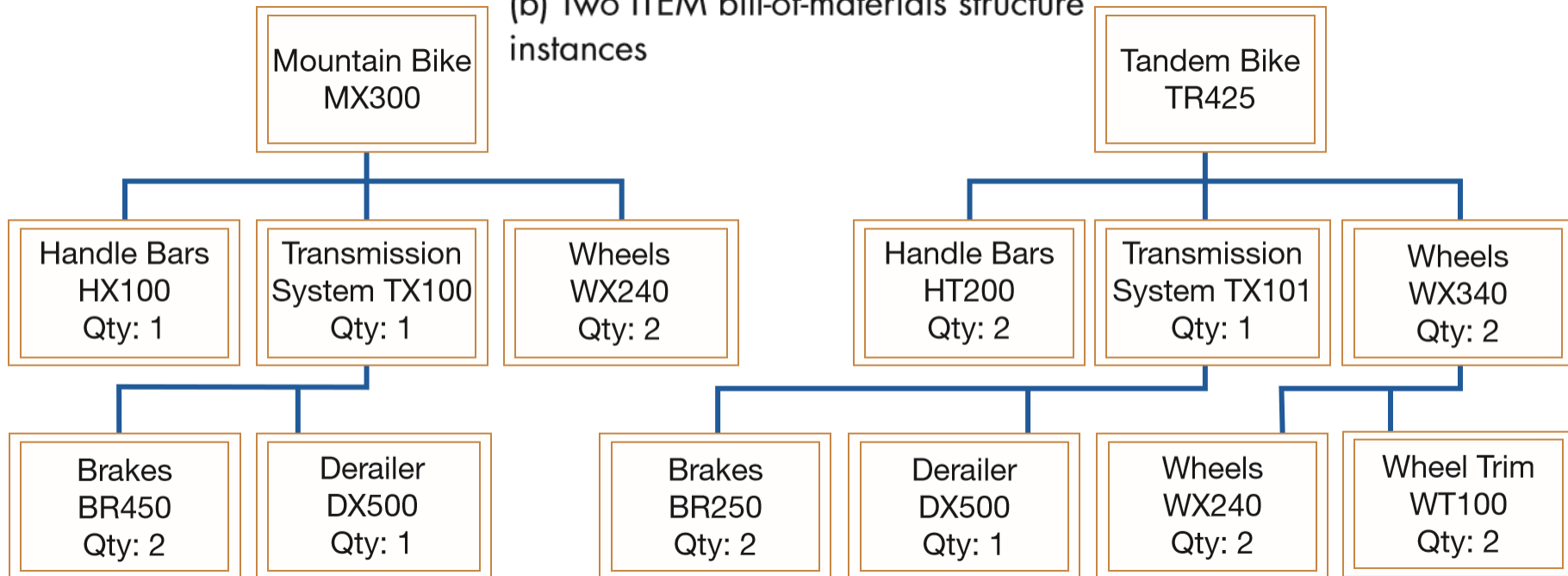


FIGURE 8-12

Representing a bill-of-materials structure

(a) Many-to-many relationship

(b) Two ITEM bill-of-materials structure instances



Degree of a Relationship

Binary Relationships

- Binary relationship:
 - Exists when two entities have an *associated relationship* (i.e. relationship between instances of two entities)
 - It is the most common relationship used in data modeling
- Three example are shown on the [next slide](#)

Degree of a Relationship

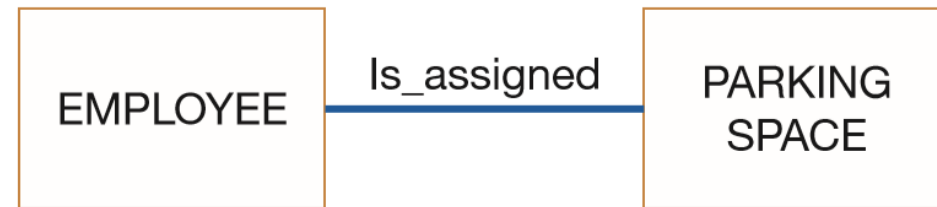
Binary Relationships (cont.)

- Examples (cont.)
 - *one-to-one*: employee is assigned 1 parking place, each parking place is assigned to 1 employee
 - *one-to-many*: product line may contain several products, and each product belongs to only 1 product line
 - *many-to-many*: student may register for > 1 course, each course may have many student registrants

FIGURE 8-11

Examples of relationships of different degrees

(b) Binary relationships



One-to-one



One-to-many



Many-to-many

Degree of a Relationship

Ternary Relationships

- Ternary relationship:
 - It is *simultaneous* relationship among instances of 3 entities
 - i.e. it occurs when 3 entities share a *common relationship*
- Examine example shown on the [next slide](#):
 - Relationship: Supplies tracks the
 - quantity of a given part,
 - that is shipped by a particular vendor,
 - to a selected warehouse
 - All three entities are *many* participants (in this example)
 - Shipping_Mode
 - attribute of Supplies relationship
 - it's type of shipping carrier used for a particular PART, shipped from particular VENDOR to particular WAREHOUSE

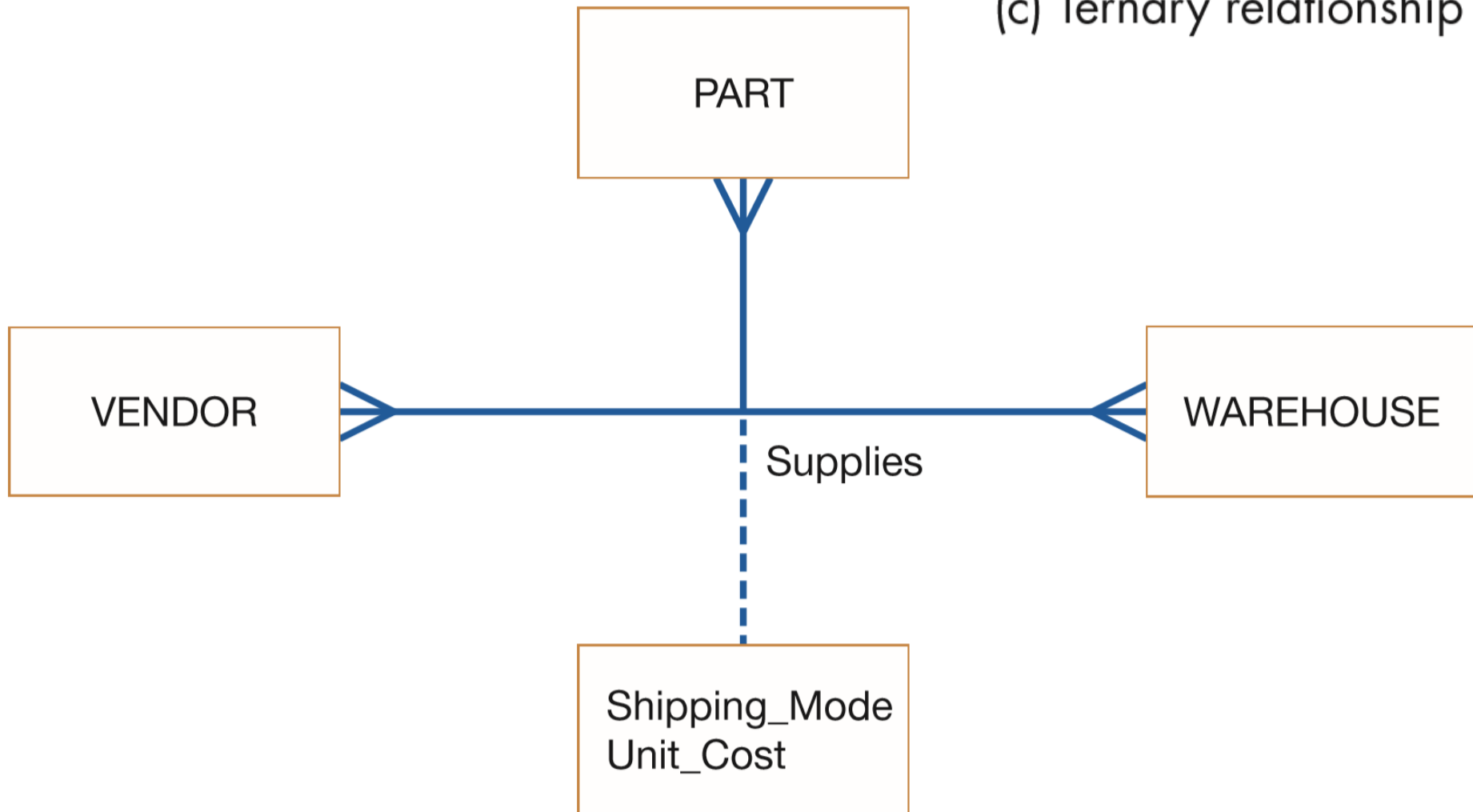
Degree of a Relationship

Ternary Relationships (cont.)

FIGURE 8-11

Examples of relationships of different degrees

(c) Ternary relationship



Degree of a Relationship

N-ary Relationships

- Occurs when > 3 entities share a relationship
- This situation rarely occurs and can be ignored for the purposes of this course

Cardinalities in Relationships



Cardinalities in Relationships

Cardinality

- This is the number of entity occurrences associated with 1 occurrence of the related entity
- Represented by Questions 5, 7, and 8 in [Table 8-1](#)
- Cardinality is indicated at the ends of the relationship arc by either
 - [Symbols](#) (crow's foot notation), or
 - [Numbers](#) (another system we will also discuss)
- Example:
 - 2 entity types, A and B, are connected by a relationship
 - \Rightarrow cardinality is number of instances of entity B that can (or must) be associated with each instance of entity A

Cardinalities in Relationships

Minimum and Maximum Cardinalities

- Consider relationship for [DVDs at a video store](#):
 - Since video store may stock > 1 DVD of a given movie, it is clear that this is (basically) a “many” relationship (Fig. 8-13a)
- We use min. & max. cardinalities to more precisely indicate range of cardinalities for a relationship
 - This notation is shown below
 - A more detailed version is shown on the [following slide](#)



Mandatory One




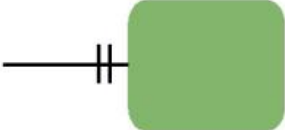
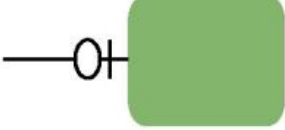
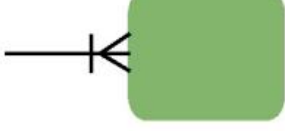


Optional One



Mandatory Many



Optional Many

CARDINALITY INTERPRETATION	MINIMUM INSTANCES	MAXIMUM INSTANCES	GRAPHIC NOTATION
Exactly one (one and only one)	1	1	 - or - 
Zero or one	0	1	
One or more	1	many (>1)	
Zero, one, or more	0	many (>1)	
More than one	>1	>1	

Cardinalities in Relationships

Minimum and Maximum Cardinalities (cont.)

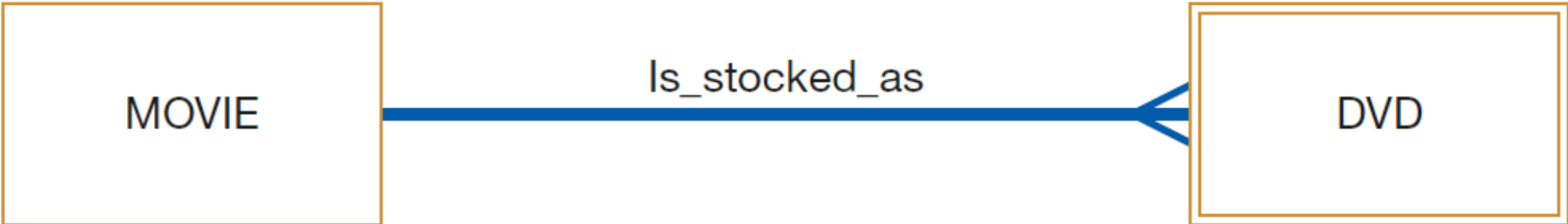
- Minimum Cardinality:
 - This's the *minimum number* of instances of entity B that may be associated with each instance of entity A
 - In our [e.g.](#) min. # of DVDs available for a movie is 0
⇒ DVD is **optional participant** in the `Is_stocked_as` relationship
 - If minimum cardinality of a relationship = 1
⇒ entity B is a **mandatory participant** in the relationship

Cardinalities in Relationships

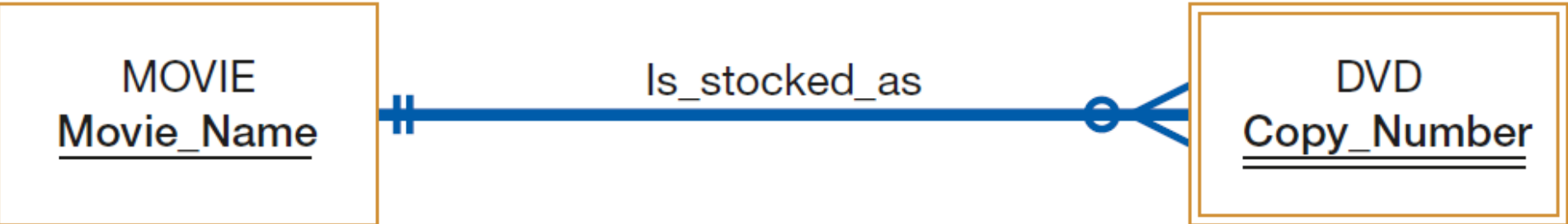
FIGURE 8-13

Introducing cardinality constraints

(a) Basic relationship



(b) Relationship with cardinality constraints



Cardinalities in Relationships

Minimum and Maximum Cardinalities (cont.)

- Maximum Cardinality:
 - This's is the *maximum number* of instances of entity B that may be associated with each instance of entity A
 - In our e.g. maximum is "many" (an unspecified number > 1)
 - 0 thru line near DVD entity means min. cardinality of zero
 - crow's foot notation means a "many" maximum cardinality
 - double underline of Copy_Number:
 - indicates that this attribute is part of the identifier of DVD
 - note, full composite identifier must also include the identifier of MOVIE, Movie_Name

MOVIE
Movie_Name

Is_stocked_as

DVD
Copy_Number



Cardinalities in Relationships

Minimum and Maximum Cardinalities (cont.)

- Following are 3 relationships that show *all possible combinations* of min. & max. cardinalities
1. PATIENT Has_recorded PATIENT_HISTORY
 - Each patient has recorded *one or more patient* histories (note, 1st patient visit is recorded as PATIENT HISTORY instance)
 - Each instance of PATIENT HISTORY is a record for *exactly one* PATIENT

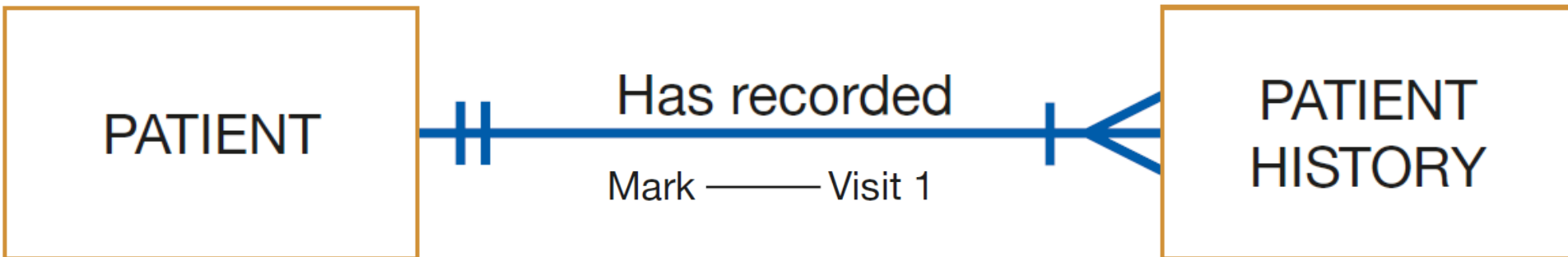


FIGURE 8-14

Examples of cardinality constraints
(a) Mandatory cardinalities

Cardinalities in Relationships

Minimum and Maximum Cardinalities (cont.)

2. EMPLOYEE Is_assigned_to PROJECT

- o Each PROJECT has *at least one* assigned EMPLOYEE
- o Each EMPLOYEE *may or may not* be assigned to any existing PROJECT, or may be assigned to several PROJECTs

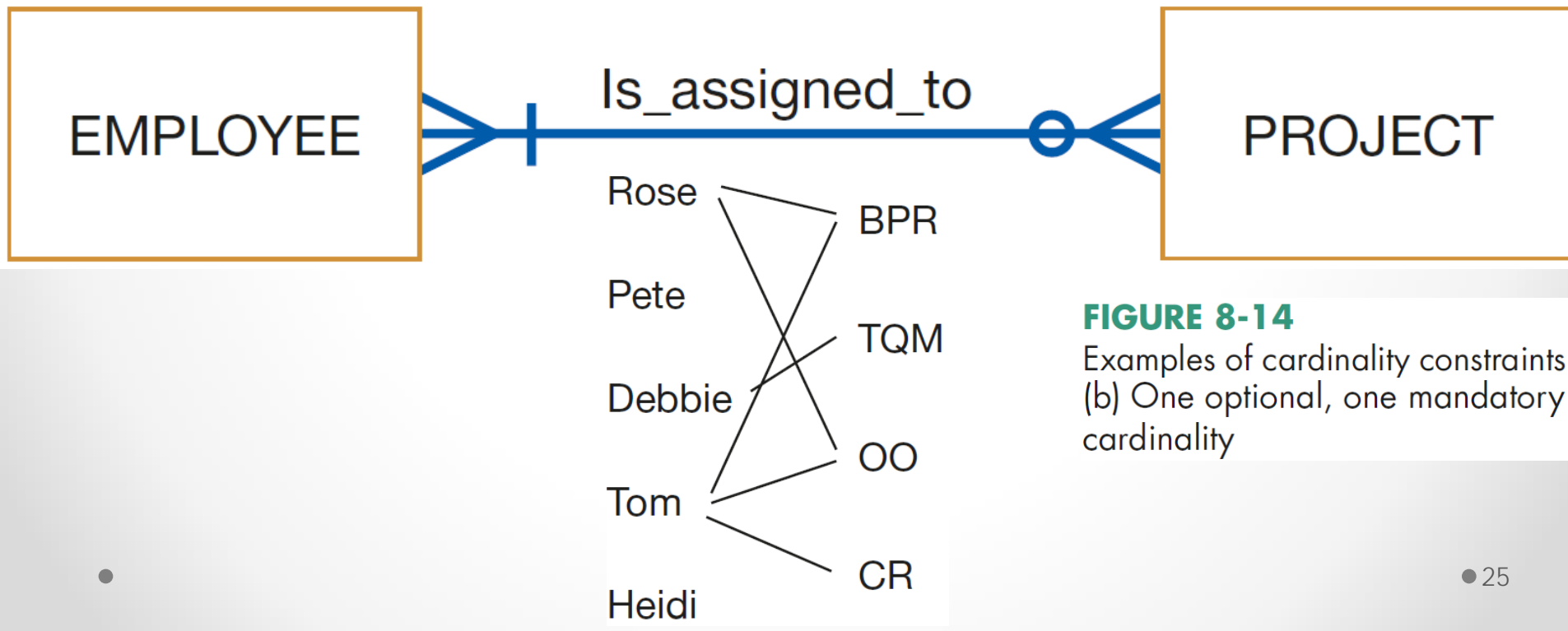


FIGURE 8-14

Examples of cardinality constraints
(b) One optional, one mandatory cardinality

Cardinalities in Relationships

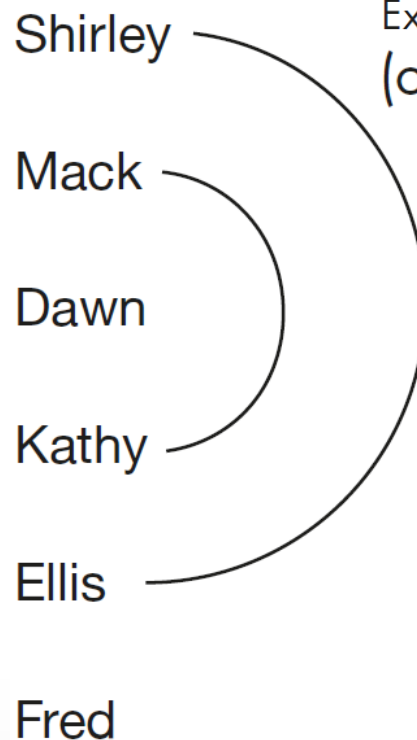
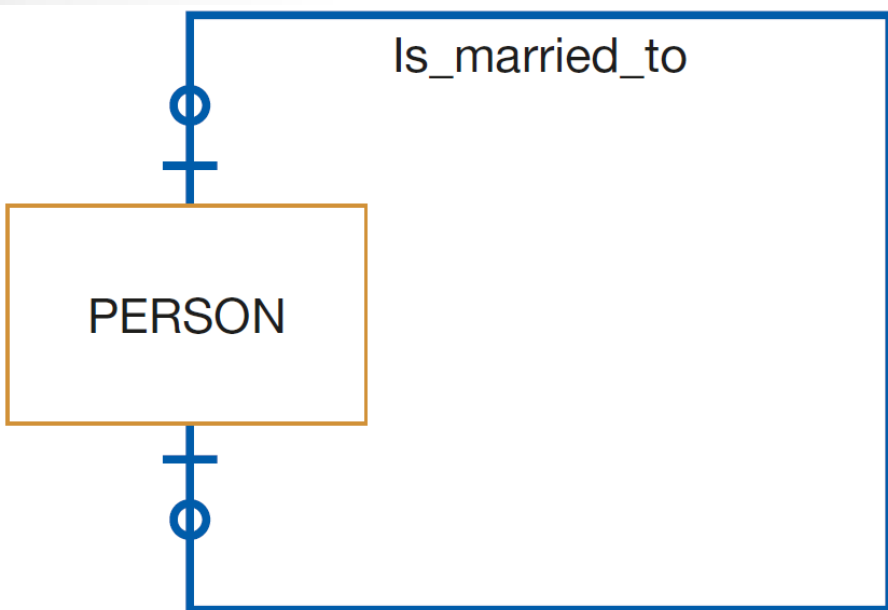
Minimum and Maximum Cardinalities (cont.)

3. PERSON Is_married_to PERSON

- This is an optional *zero or one cardinality* (in both directions)
- i.e. person may or may not be married

FIGURE 8-14

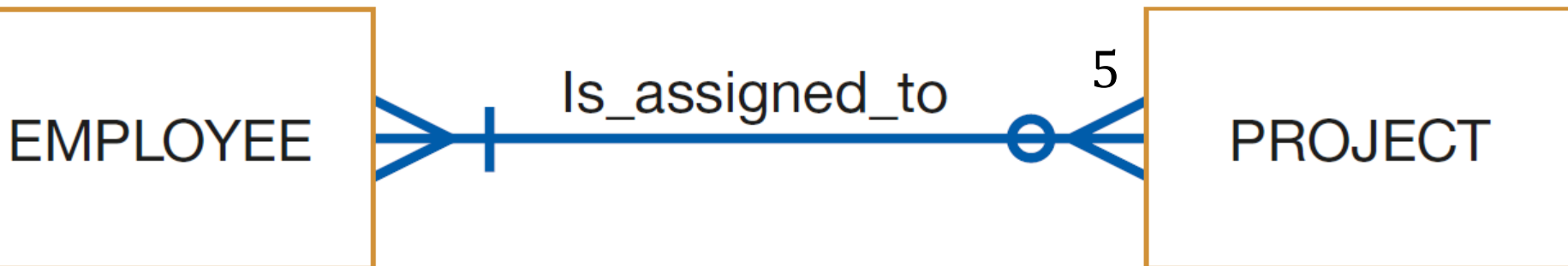
Examples of cardinality constraints
(c) Optional cardinalities



Cardinalities in Relationships

Alternative Cardinality System

- It is possible for the maximum cardinality to be a fixed number, not an arbitrary “many” value
 - Cardinality limits are determined according to the way in which the business is operated (**business rules** of enterprise)
- e.g. suppose corporate policy states that employee may work on *at most* 5 projects at the same time
 - We could show this business rule by placing a “5” above (or below) crow’s foot next to PROJECT entity



Cardinalities in Relationships

Alternative Cardinality System (cont.)

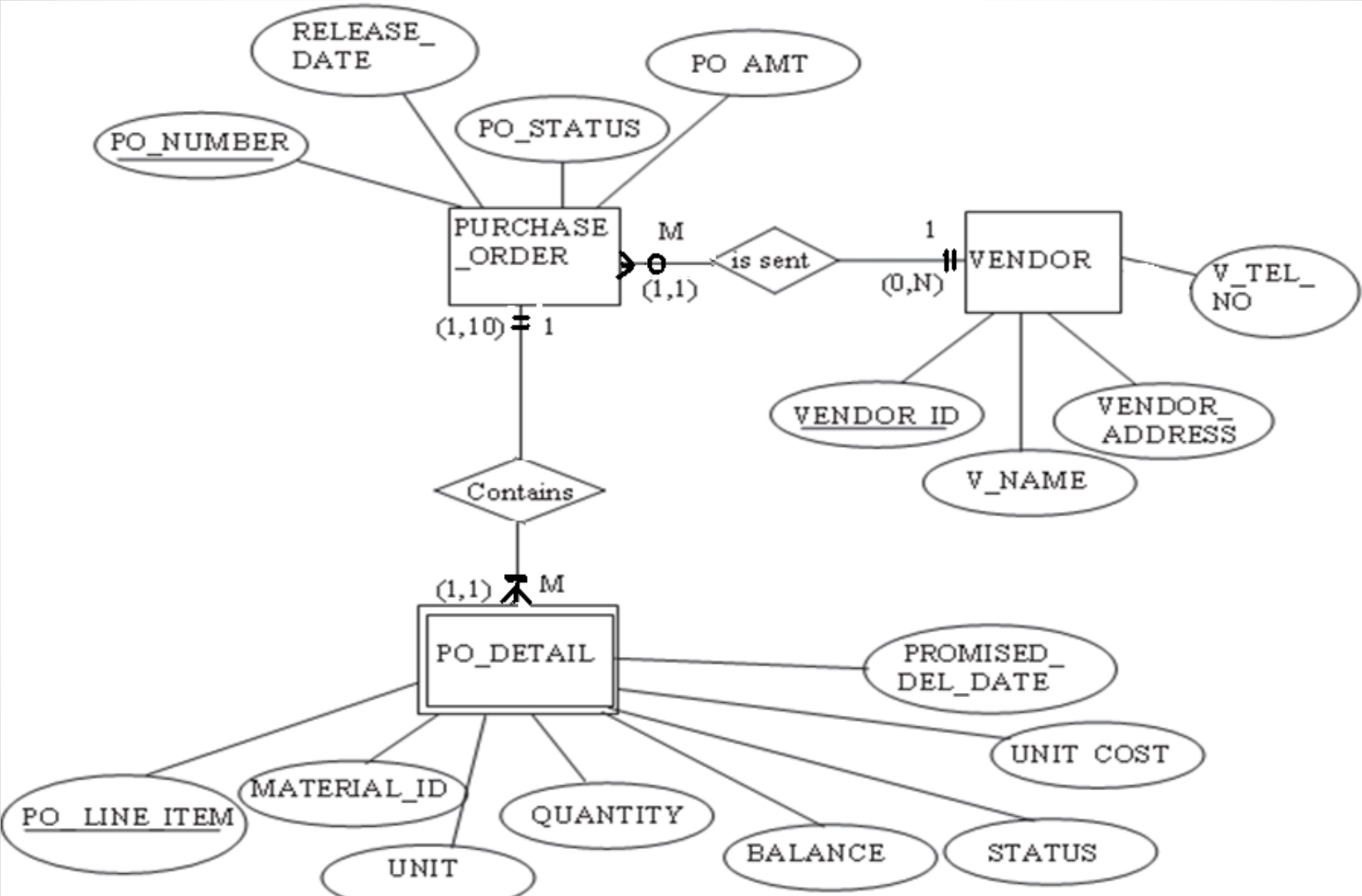
- In this system, cardinalities limits are shown as numbers in parentheses, as follows
 - One-to-one: (1 : 1)
 - One-to-many: (1 : M)
 - Many-to-many: (M : N)

Cardinalities in Relationships

Alternative Cardinality System (cont.)

- Examine e.g. of this shown on the [next slide](#)
 - Cardinality 1 : M means:
 - each instance of an entity is associated with 0, 1, or many instances of the entity on the M side of the relationship
 - Relationship between PURCHASE_ORDER and PO_DETAIL:
 - cardinality limits for PO_DETAIL are (1,1)
 - \Rightarrow each PO_DETAIL is associated with one purchase order
 - Similarly, the cardinality limits of PURCHASE_ORDER is (1,10):
 - \Rightarrow a minimum of 1 and a maximum of 10 line items are associated with one purchase order
 - Also, relationship between PURCHASE_ORDER and VENDOR:
 - cardinality limits for VENDOR are (0,N)
 - \Rightarrow each vendor is sent 0, 1 or many purchase orders

Cardinalities in Relationships



Cardinalities in Relationships

Alternative Cardinality System (cont.)

- Let's see if you can determine for the e.g. below:
 - Type and degree of relationship
 - Cardinality limits for each entity



Cardinalities in Relationships

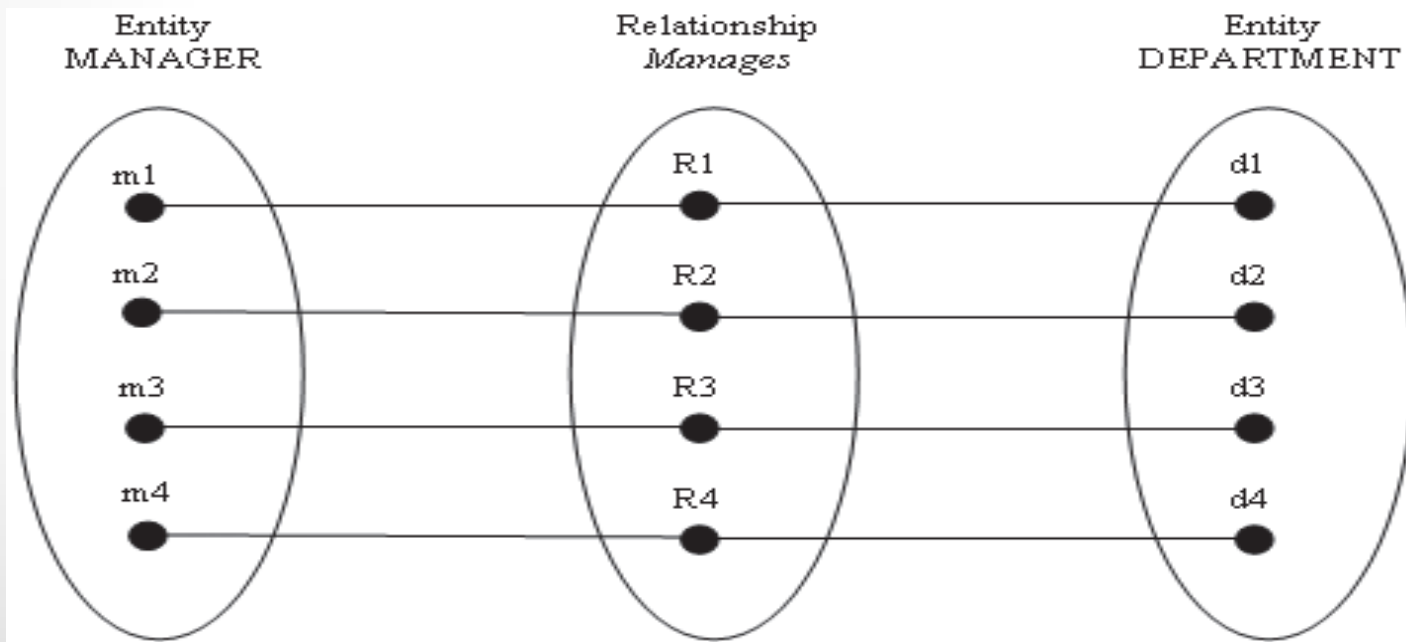
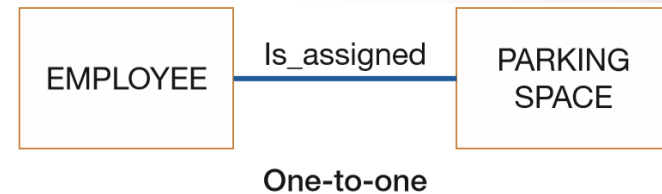
Semantic Net Diagram

- M : N relationship is difficult to handle in a database query
 - \Rightarrow it is usu. expanded into a series of 1 : M relationships in the final database tables
- Semantic net diagram:
 - Useful graphical tool that assists in visualizing the cardinality of a relationship
 - Can be used to represent (see upcoming slides):
 1. [1 : 1 relationship](#)
 2. [1 : M relationship](#)
 3. [M : N relationship](#)
 - Note how in [M : N relationship](#), # of instances of relationship (6) is $>$ # of related instances in an entity set (2, 4)

Cardinalities in Relationships

Semantic Net Diagram (cont.)

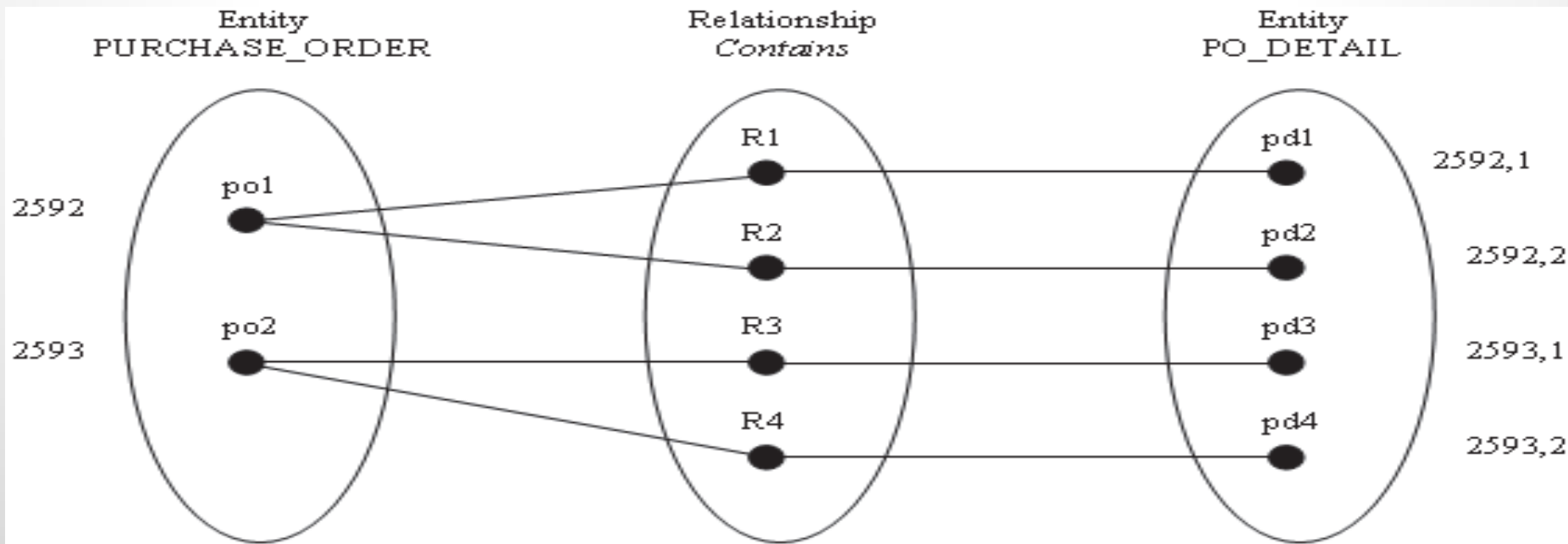
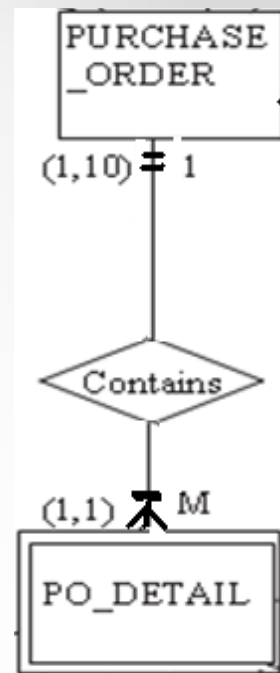
- 1 : 1 semantic net diagram for relationship between MANAGER and DEPARTMENT



Cardinalities in Relationships

Semantic Net Diagram (cont.)

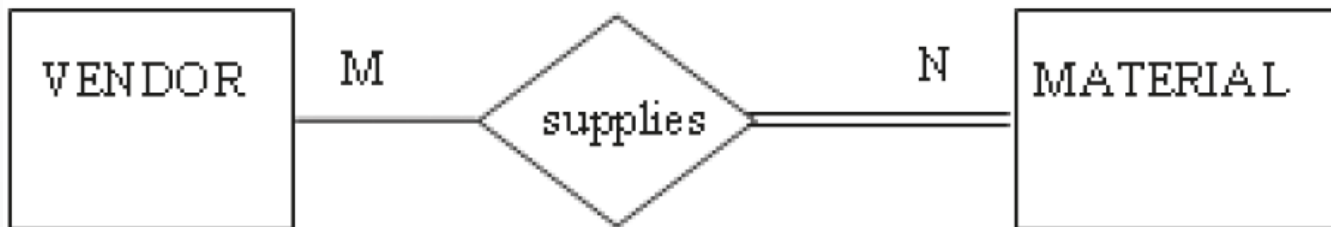
- 1 : M semantic net diagram for relationship between PURCHASE_ORDER and PO_DETAIL



Cardinalities in Relationships

Semantic Net Diagram (cont.)

3. M : N semantic net diagram for relationship between VENDOR and MATERIAL
- Business rules:
 - A vendor supplies material to a company
 - 1 vendor may supply > 1 material
 - Also, specific material may be supplied by > 1 vendor



Cardinalities in Relationships

Semantic Net Diagram (cont.)

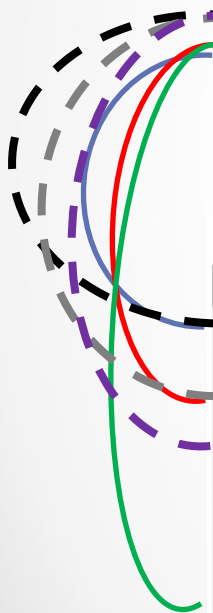
- M : N semantic net diagram for relationship between VENDOR and MATERIAL (cont.):

Entity Set: VENDOR

VENDOR ID	V NAME	V STREET	V CITY	V STATE	V ZIP
V110	Jersey	2 Main St.	Patterson	NJ	07055
V25	General	125 Common	Boise	ID	44830
V250	Spices	25 Salty Lane	East Hampton	NY	10027
V75	Pasta Supply.	34 Henry St.	Philadelphia	PA	09098

Entity Set: MATERIAL

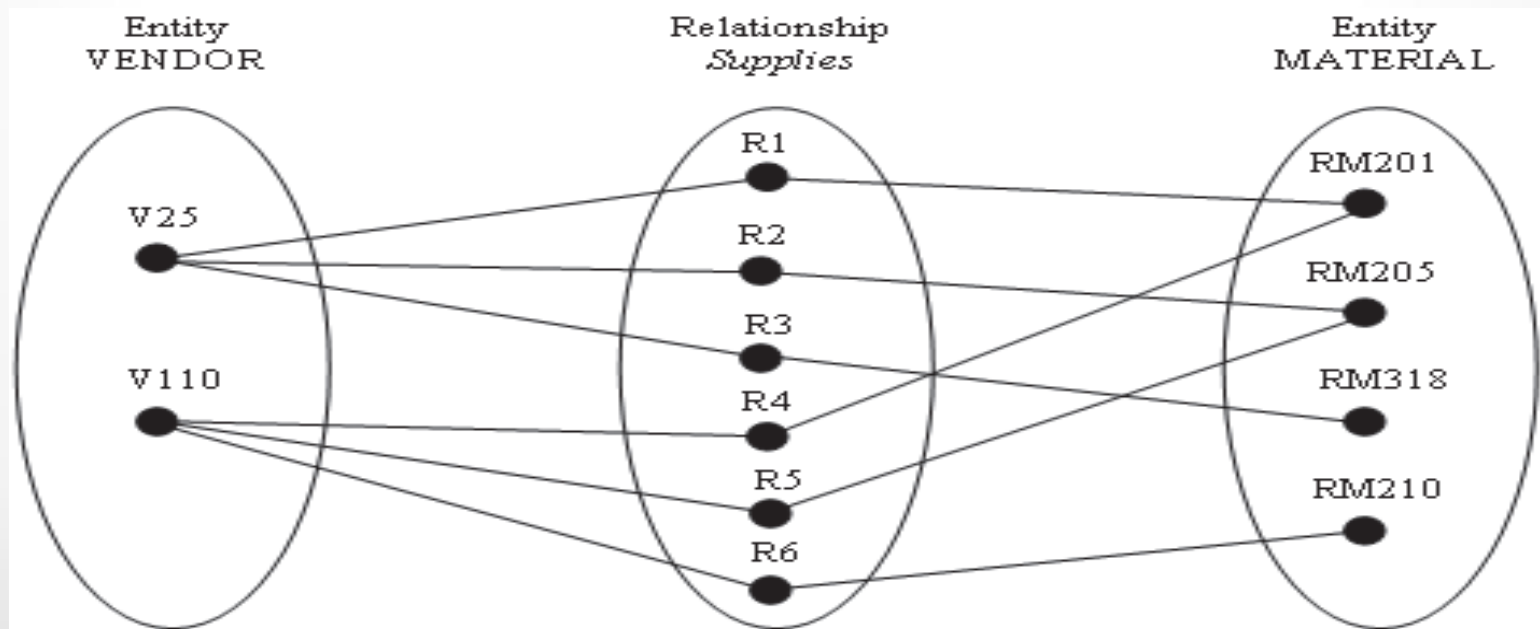
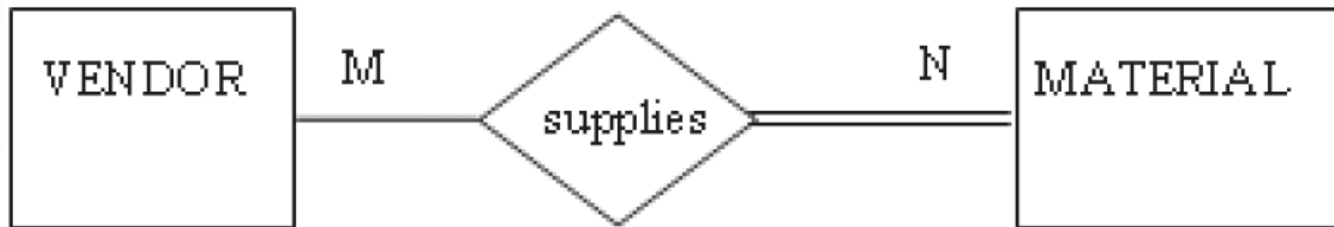
MATERIAL ID	MATL DESCRIPTION
RM201	Carrots, whole
RM202	Carrots, diced, 1/4 inch
RM205	Potatoes, Eastern,
RM210	Peas, shelled
RM211	Tomatoes, whole
RM310	Garlic, whole
RM311	Garlic powder
RM318	Salt, iodized
RM308	Onion salt
RM305	Paprika
RM340	Sugar, bulk
RM805	Olive oil
RM810	Vinegar, white



Cardinalities in Relationships

Semantic Net Diagram (cont.)

- M : N semantic net diagram for relationship between VENDOR and MATERIAL (cont.):



Naming Relationships



Naming Relationships

Few special guidelines for naming relationships:

- Relationship name is a verb phrase
 - e.g. Assigned_to, Supplies, or Teaches
- Relationships represent actions, usually in the present tense
- Relationship name states the action taken, not the result of the action
 - e.g. use Assigned_to, not Assignment
- Avoid vague names
 - e.g. such as Has or Is_related_to
- Use descriptive verb phrases (action verbs)

Videos to Watch

- Entity Relationship Diagram (ERD) Tutorial - Part 1
<https://youtu.be/QpdhBUYk7Kk>
- Entity Relationship Diagram (ERD) Tutorial - Part 2
<https://youtu.be/-CuY5ADwn24>
- Entity-Relationship Diagrams (another system)
https://youtu.be/c0_9Y8QAstg
- Entity Relationship Diagram (ERD) Training Video
<https://youtu.be/-fQ-bRllhXc>

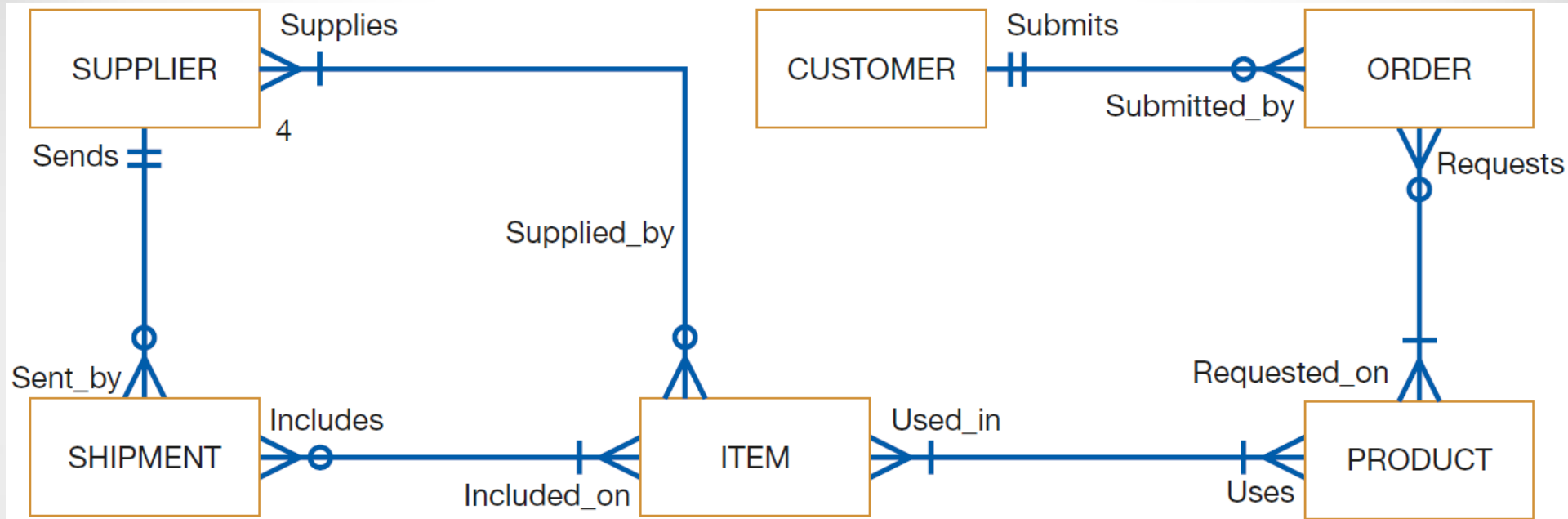


Sources

- “**Chapter 3: Database Modeling and Design**”; Slides by Dr. Sabeur Kosantini (2017)
- “**Types of Database Management Systems**” (2017) by Arjun Panwar, c-sharpcorner.com; Available at: <https://www.c/sharpcorner.com/UploadFile/65fc13/types-of-database-management-systems/>
- **Modern Systems Analysis and Design**. Joseph S. Valacich and Joey F. George. Pearson. Eighth Ed. 2017. Chapter 8.
- **Design of Industrial Information Systems**. Thomas Boucher, and Ali Yalcin. Academic Press. First Ed. 2006. Chapter 3.



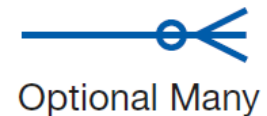
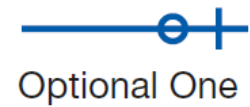
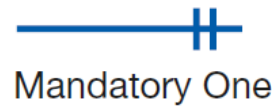
Sample E-R Diagram



Key

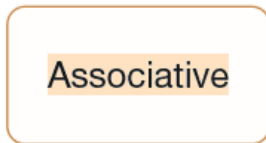


Cardinalities

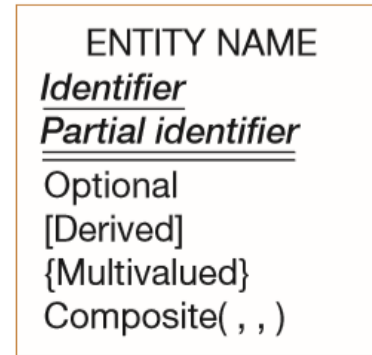


Basic E-R Notation

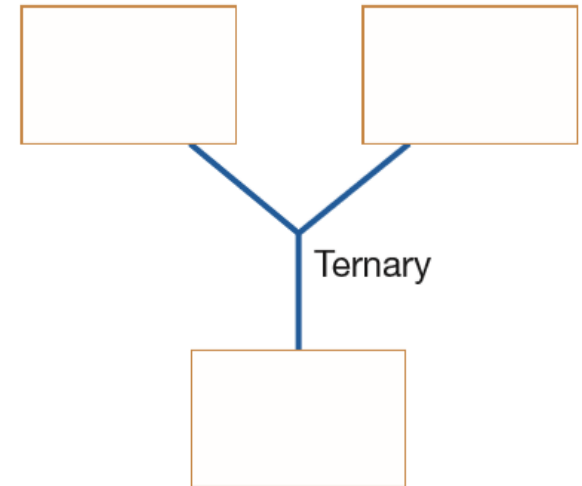
Entity Types



Attributes



Relationship Degrees



Relationship Cardinality



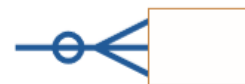
Mandatory One



Mandatory Many



Optional One



Optional Many

Gathering Info. for Conceptual Data Modeling

TABLE 8-1 Requirements Determination Questions for Data Modeling

1. *What are the subjects/objects of the business?* What types of people, places, things, materials, events, etc. are used or interact in this business, about which data must be maintained? How many instances of each object might exist? — **data entities and their descriptions**
2. *What unique characteristic (or characteristics) distinguishes each object from other objects of the same type?* Might this distinguishing feature change over time or is it permanent? Might this characteristic of an object be missing even though we know the object exists? — **primary key**
3. *What characteristics describe each object?* On what basis are objects referenced, selected, qualified, sorted, and categorized? What must we know about each object in order to run the business? — **attributes and secondary keys**
4. *How do you use these data?* That is, are you the source of the data for the organization, do you refer to the data, do you modify it, and do you destroy it? Who is not permitted to use these data? Who is responsible for establishing legitimate values for these data? — **security controls and understanding who really knows the meaning of data**

Gathering Info. for Conceptual Data Modeling

TABLE 8-1 Requirements Determination Questions for Data Modeling

5. *Over what period of time are you interested in these data? Do you need historical trends, current “snapshot” values, and/or estimates or projections? If a characteristic of an object changes over time, must you know the obsolete values?* — **cardinality and time dimensions of data**
6. *Are all instances of each object the same? That is, are there special kinds of each object that are described or handled differently by the organization? Are some objects summaries or combinations of more detailed objects?* — **supertypes, subtypes, and aggregations**
7. *What events occur that imply associations among various objects? What natural activities or transactions of the business involve handling data about several objects of the same or a different type?* — **relationships and their cardinality and degree**
8. *Is each activity or event always handled the same way or are there special circumstances? Can an event occur with only some of the associated objects, or must all objects be involved? Can the associations between objects change over time (for example, employees change departments)? Are values for data characteristics limited in any way?* — **integrity rules, minimum and maximum cardinality, time dimensions of data**