



د/ زياد أحمد علم الدين

الفصل الدراسي الأول
١٤٢٨/١٤٢٩ هـ

جامعة الملك سعود
كلية العمارة والتخطيط
قسم التخطيط العمراني

()

(AutoCAD 2006)

()

_____:

(Model Space)

.1 Drawing Unit = 1m

:

.(FILE)

(NEW)

.

.(L:\)

.

↵ Enter

MVSETUP

.

.

Mvsetup ↵ Enter

Enable paper space [No / Yes] < Y >: N

Enter Units Type [Scientific / Decimal / Engineering / Architectural / Metric]: M

(AutoCAD Text Window) AutoCAD

(1:100

100

)

Scale

.Metric

Scale

. Enter

(

)

()

Enter paper size width: 0.297

↵ Enter

Enter paper size length: 0.21 ↵ Enter

AutoCAD ↵ Enter

.(Paper Space)

Layout1

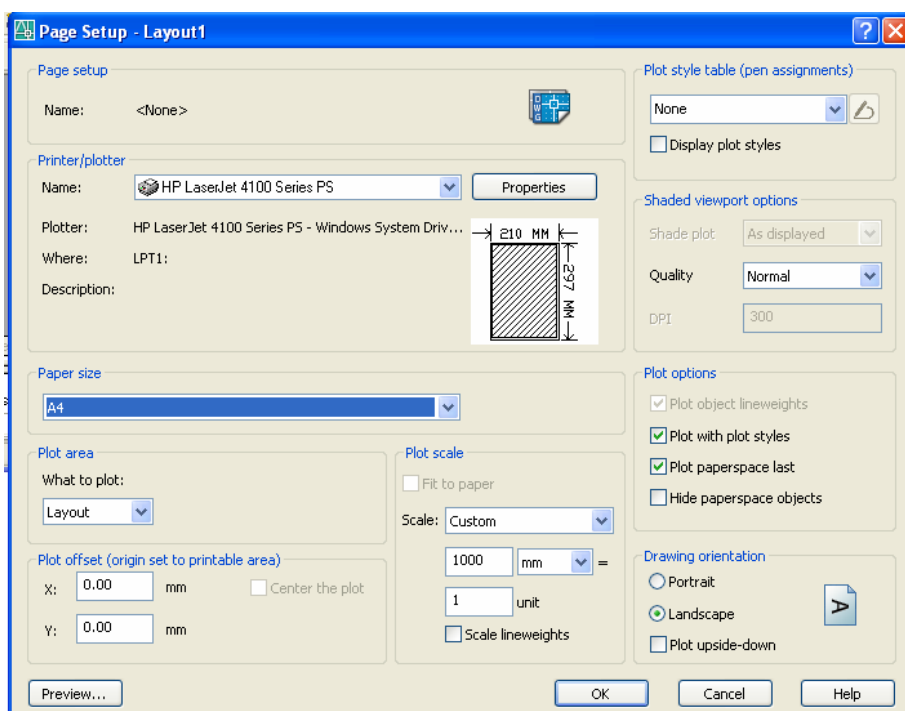
Page Setup Manager

File

Modify

New

Modify



Printer/Plotter

.(HP LaserJet 4100 Series PS)

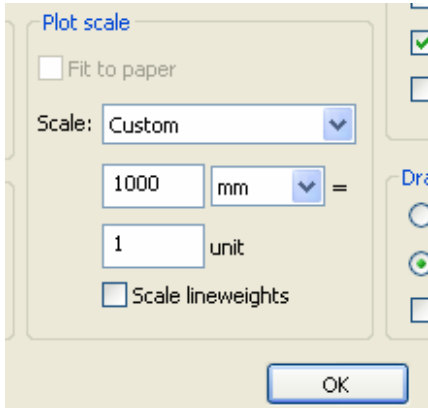
(Paper Size)

(A4)

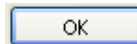
() Portrait

.Landscape

.() Landscape



Layout1



Plot Scale

Scale: Custom

1

1000

unit

.Custom

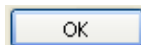
Insert



Browse

)

(L:\)



.(BorderA4

.Move

Scale

(Viewport)

↵ Enter

Mvsetup

:

Enter an option [Align/Create/Scale viewports/Options/Title block/Undo:

S

↵ Enter

Select Objects:

↵ Enter

Viewport

Enter the number of paper space units <1.0>: ↵ Enter

Enter the number of model space units <1.0>: ↵ Enter

100

Viewport

Space Paper

Pan

.Model Space

Viewport

.Paper Space

Plot Settings

Preview

Esc

OK