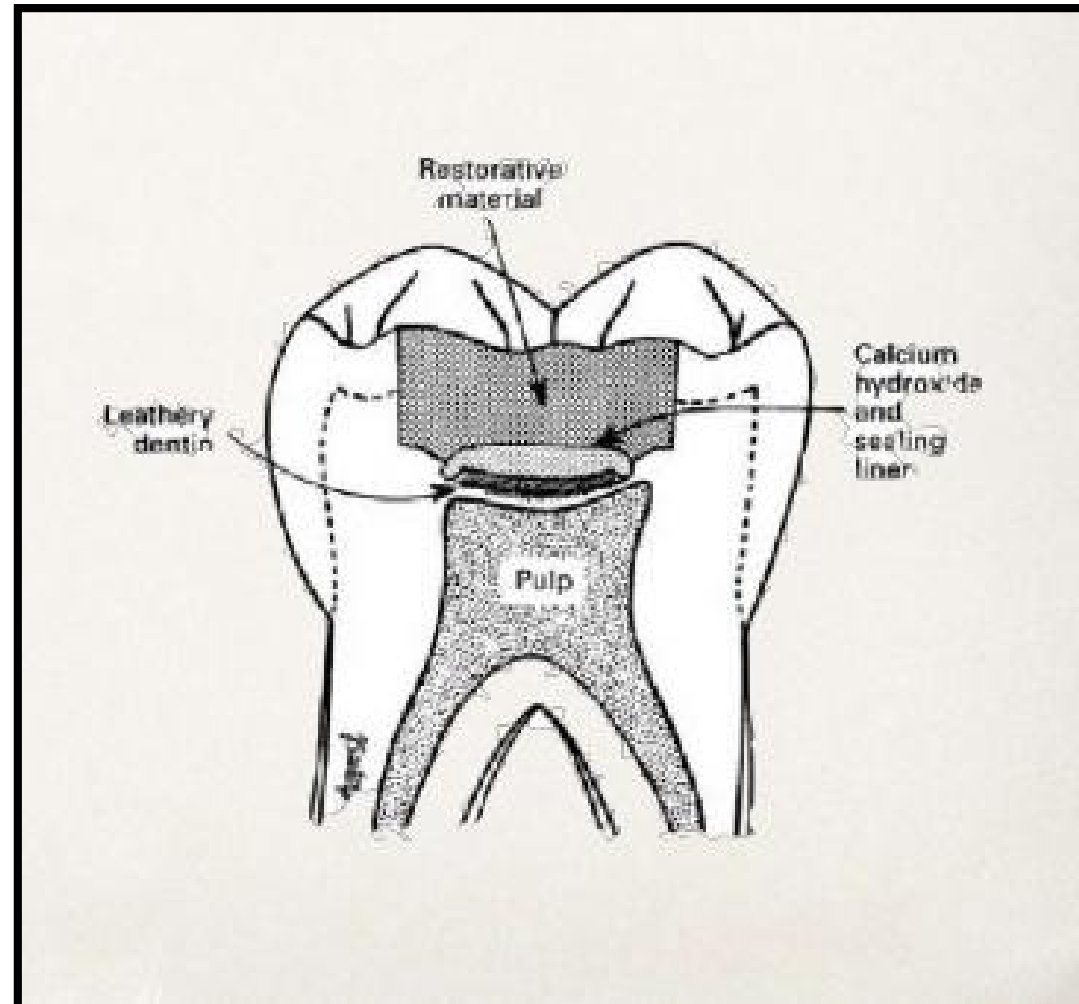


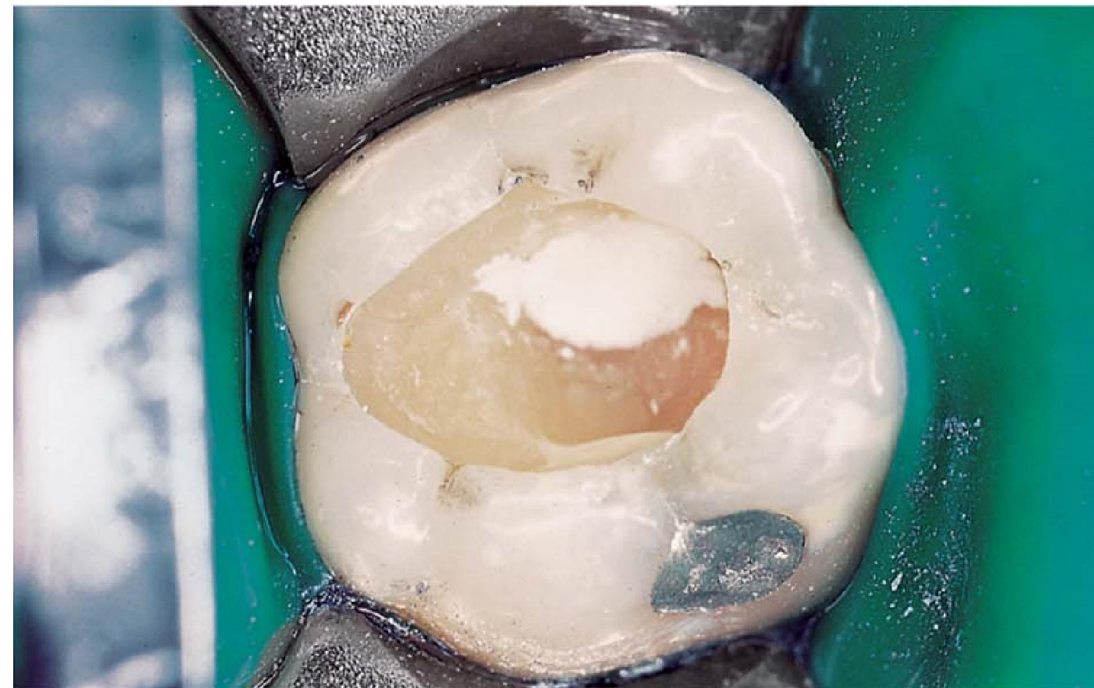
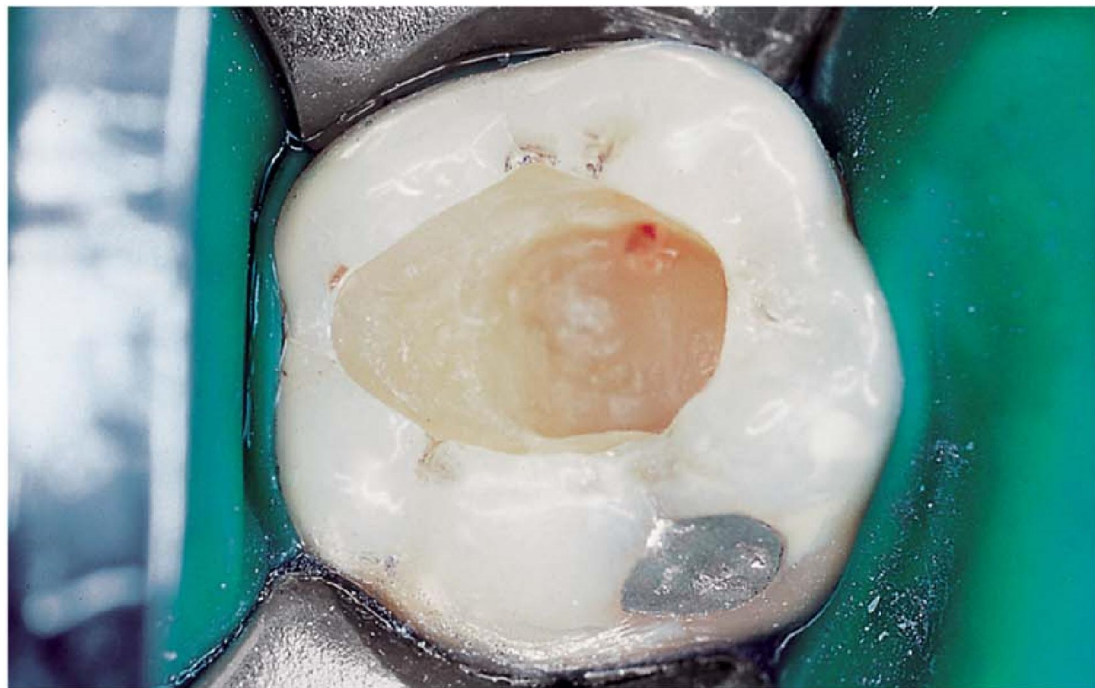
Indirect pulp capping



Indirect pulp capping

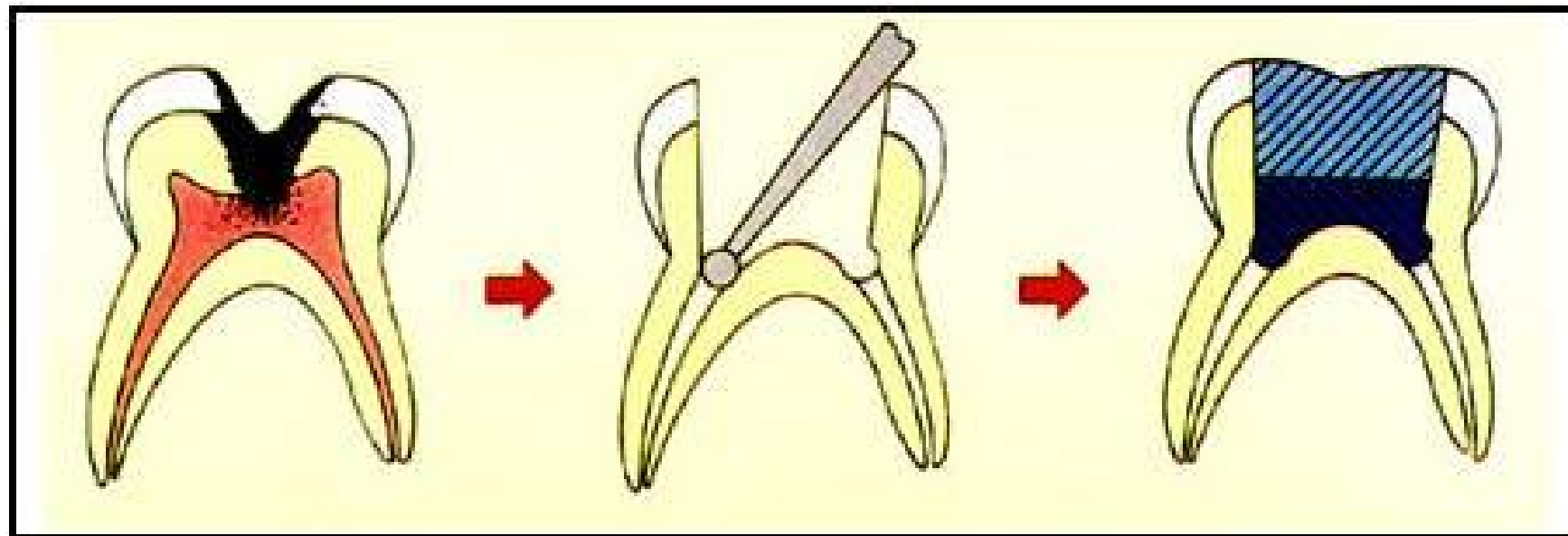


Direct pulp capping





Pulpotomy



Pulpotomy



Reversible pulpitis

Proximity to pulp with no exposure

Indirect pulp capping

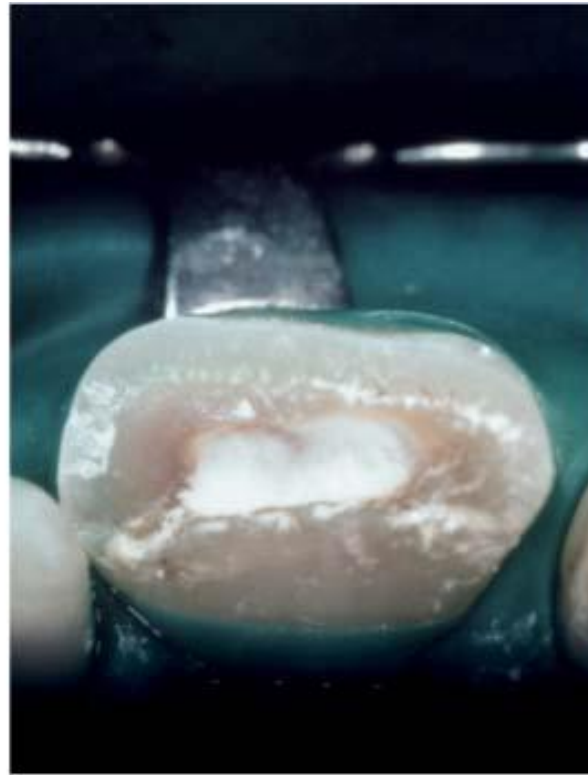
Pin point exposure and carries removed

Direct pulp capping

Larger exposure
Pulp tissue damaged

Pulpotomy/partial

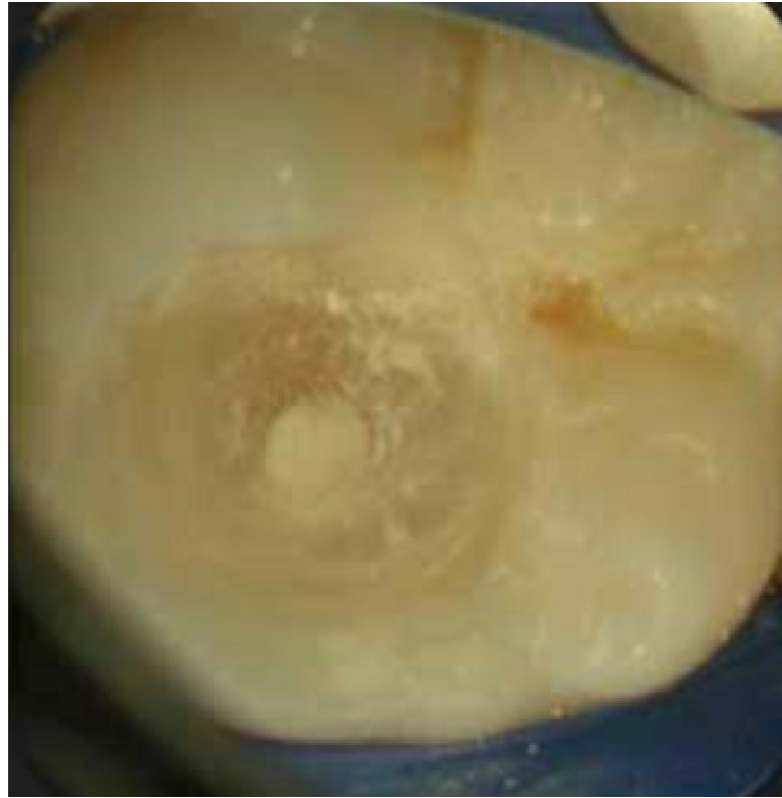
Partial pulpotomy using Calcium hydroxide



2-step pulp capping with MTA



2-step pulp capping with MTA



2-step pulp capping with MTA



Hemostasis

