

Name in Arabic :
Number:

Lecture time :

KING SAUD UNIVERSITY
COLLEGE OF ENGINEERING
CIVIL ENGINEERING DEPARTMENT

STRUCTURAL ANALYSIS : CE 361
SECOND SEMESTER, 1426/1427 H
TIME : 90 min

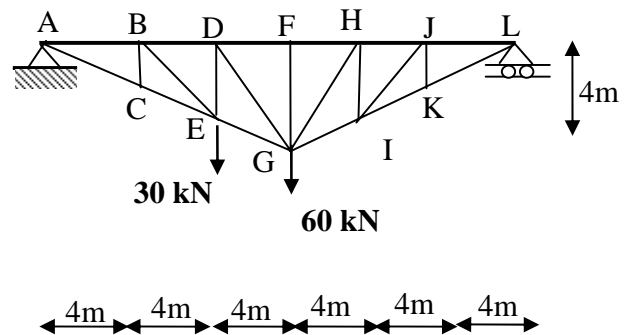
FIRST MID TERM

Note: Answer all problems in their provided space, it is recommended to use pencils for the answers

Problem 1 (10 marks)

For the shown loaded truss, it is required to;

- 1- Check the truss stability and determinacy.
- 2- Identify and mark all zero members in the truss
- 3- Use the method of joint to determine the force in member **AC**.
- 4- Use the method of sections to determine the force in member **FH**.



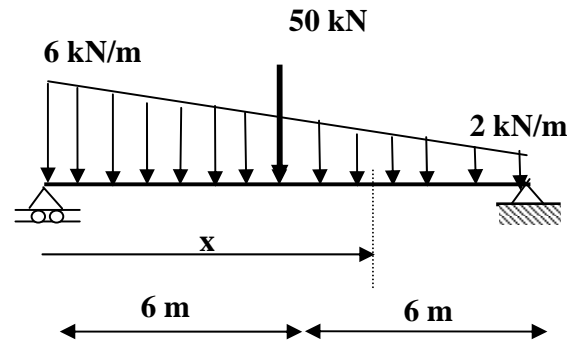
Name in Arabic :
Number:

Lecture time :

Problem 2: (10 marks)

1- For the shown loaded beam, it is required to;

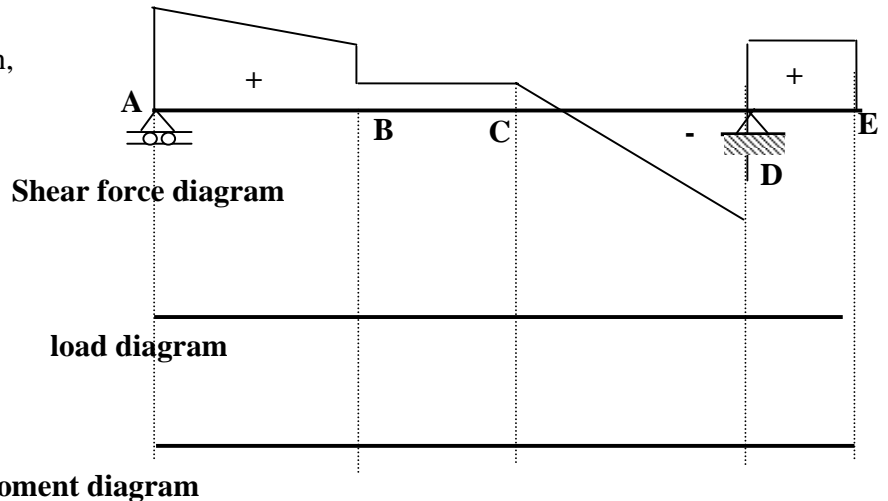
- a- Write the equation of shear force and bending moment at any distance x .
- b- Use the above obtained equations to check the relation between the shear force and bending moment.



2- The shape of the shear force diagram is given, **without any values**, for a certain loaded beam.

Without any calculations, It is required to draw neatly;

- 1- the shape of all loads acting on the beam.
- 2- The shape of bending moment diagram, given that the moment at point A = 0
- 3- Define the location of the maximum bending moment



Name in Arabic :

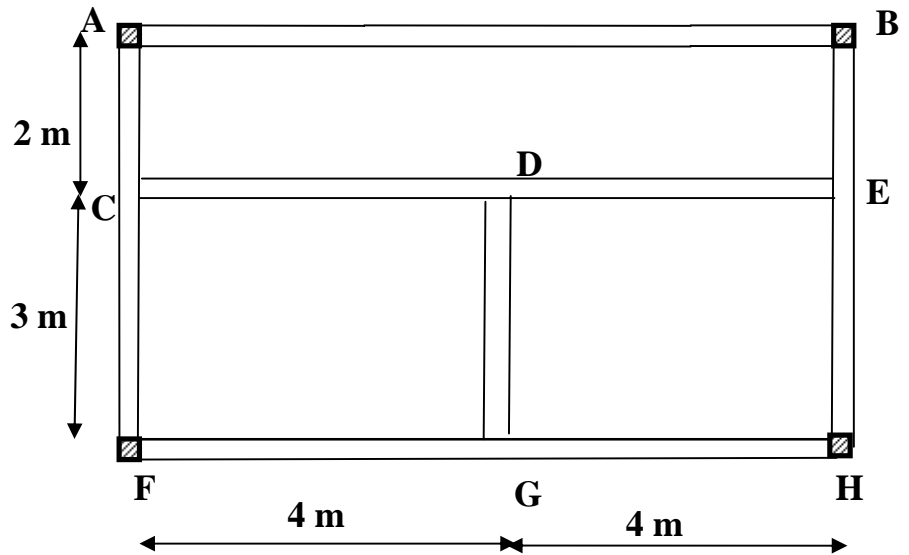
Lecture time :

Number:

Problem 3 : (10 marks)

1- The shown floor system is subjected to a uniform load distribution equal to 30 kN/m^2 . it is required to;

- a- Draw neatly on the given plan, the distribution of loads on all beams.
- b- Draw and calculate the load distribution and reactions for beam **GD** and beam **CDE**



2- For the shown structures, determine their stability and determinacy.

