



INFORMATION  
*international* SAL

RESEARCH CONSULTANTS

### **ENVIRONMENTAL AWARENESS**

The survey was conducted in collaboration with the Faculty of Education at the Lebanese University, to measure the extent of the Lebanese public's knowledge of environmental issues and ecology in general.

9 Pages



- " " "

2002

" "

Information International

\_\_\_\_\_ .I

\_\_\_\_\_ -1

.1993-4-2 216

:

-

-

-

-

-

-

-2

%0.057

5.4

2002

93

1

( )

1

	2002	2001	2000	1999	1998	1997	1996	1995	1994	1993	
52	5.4	9	2.8	2.4	5.2	4.5	5.9	8	7.5	1.4	

2002-93

:

77

52

%0.067

.II

-1

%32.2

%17.8

%19

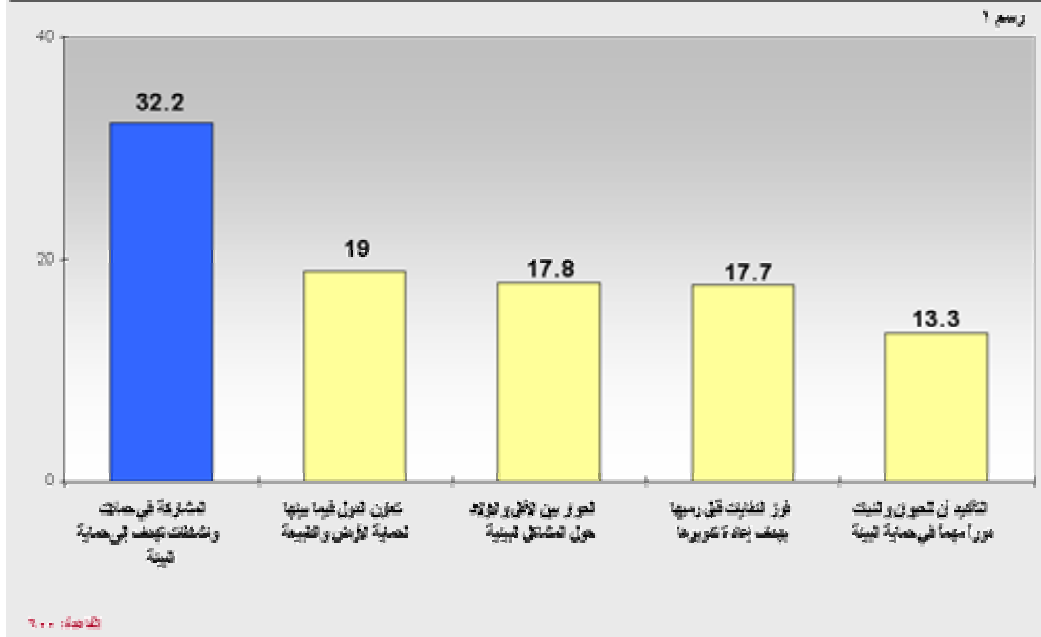
%13.3

%17.7

.(1 )

%32.2

برأيك، ما الذي يساهم في حماية البيئة من بين العوامل التالية؟ (%)



-2

8 %13.5

6

%55.2

" %17.2

10

%6.8

3

%7.3

%55.2

6

"

%80

-3

%28.7

%80

%46.3

" %9.9

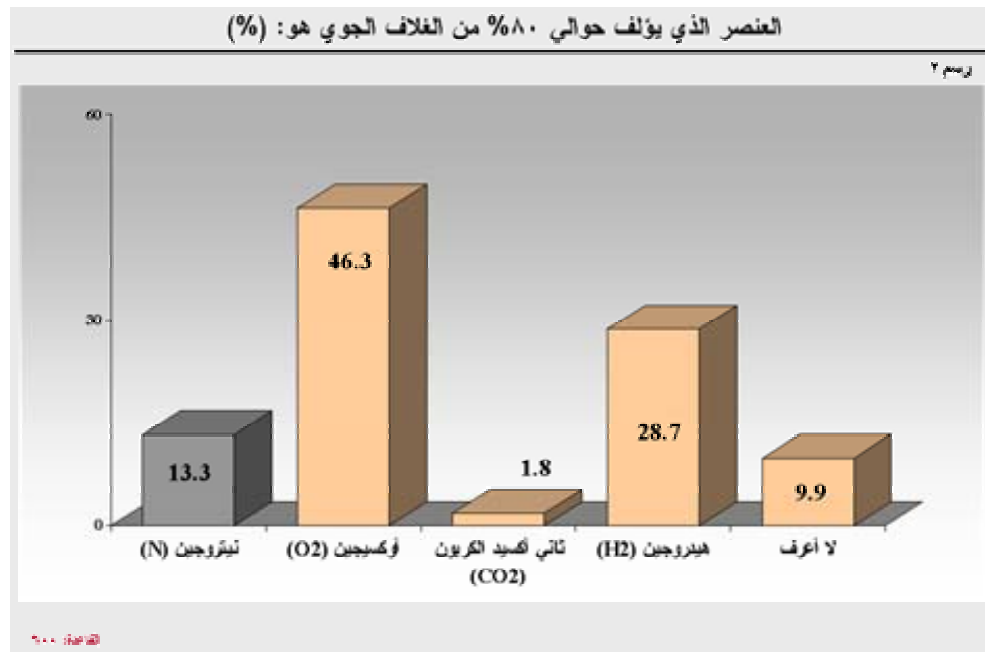
%1.8

%13.3

%13.3

%80

.(2 )



-4

---

	%7.5	%90	%70.8
	%2.5	%90	%6.5
<b>%90</b>	."	" %12.7	%90
		.	<b>%70.8</b>

-5

---

%6.7			%81.2
	."	" %3.1	%3.7
		<b>%81.2</b>	%5.3

-6

---

			%37.2
	%26.6		%26.7
."	" %0.2		%9.3
			<b>%26.6</b>

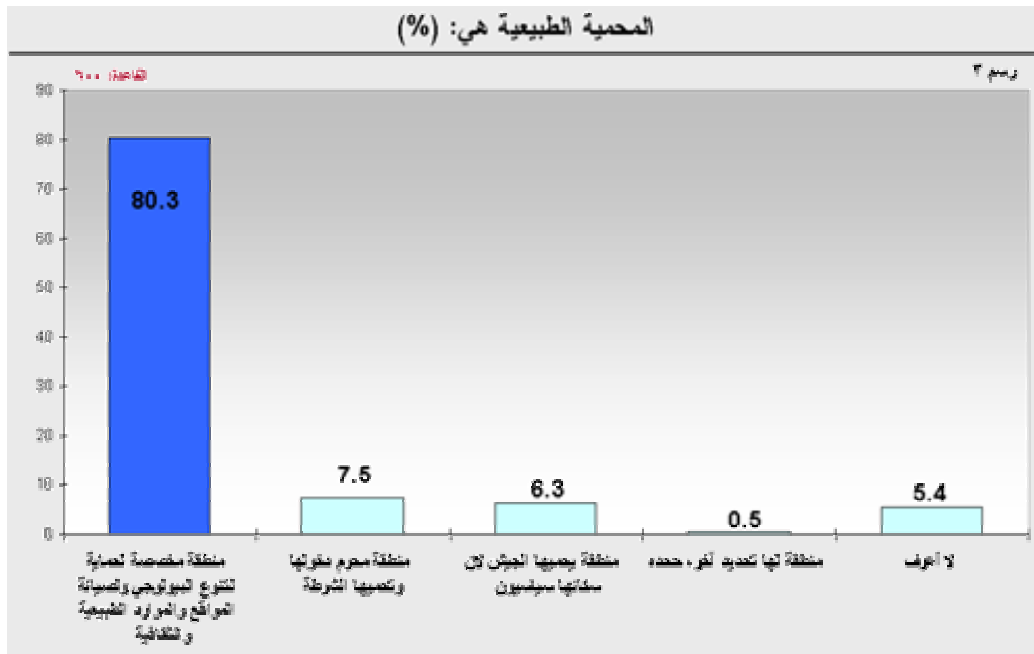
-7

---

			%80.3
%6.3		%7.5	
"	" %5.4	%0.5	

( 3 ) .

**%80.3**



-8

%21.5

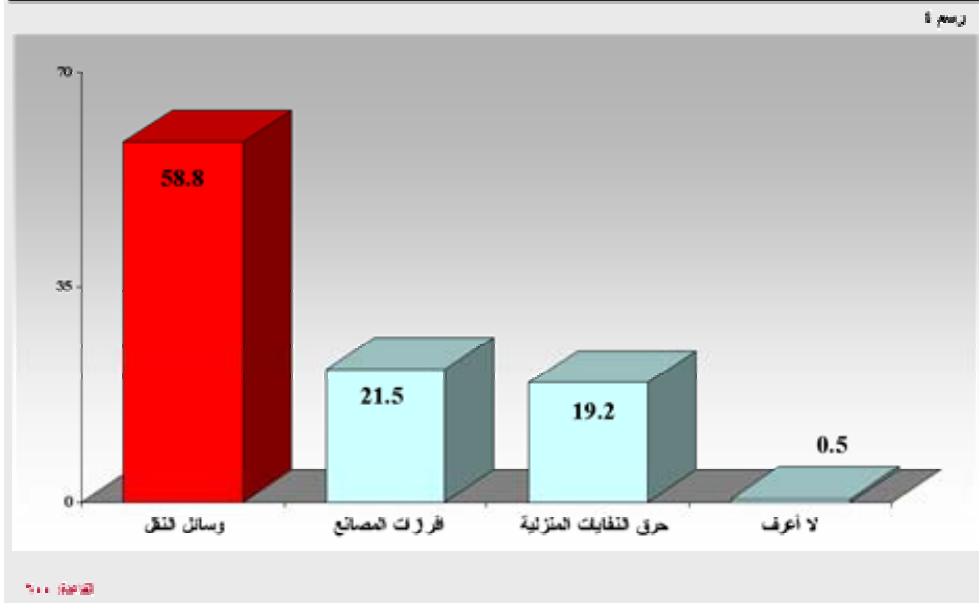
%58.8

." ( 4 ) . %0.5

%19.2

**%58.8**

النسبة الأكبر من التلوث في مدينة بيروت تنتج عن: (%)



-9

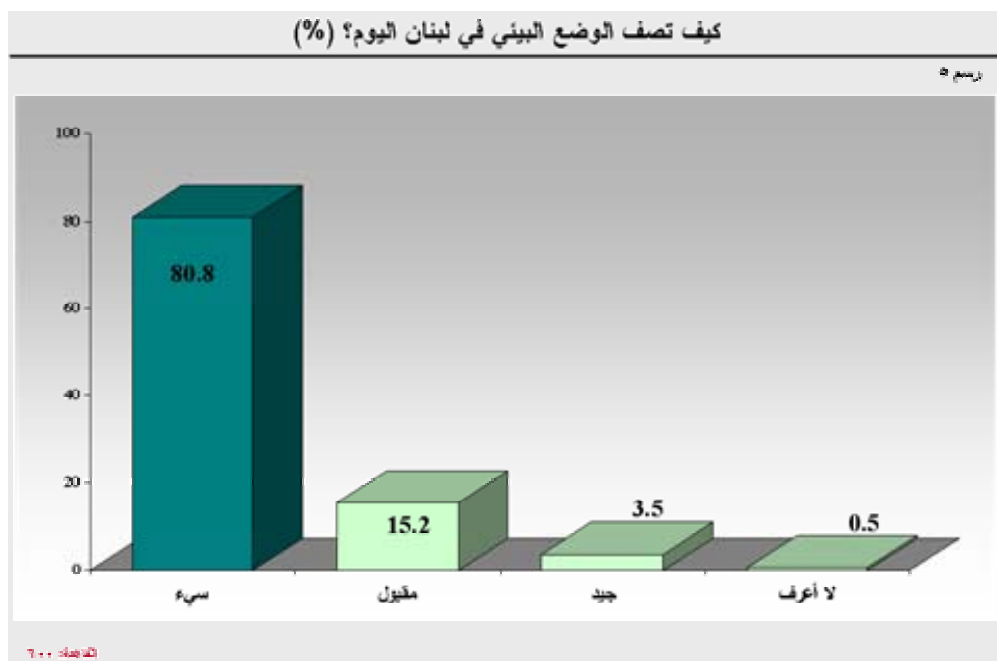
%62.2  
 %26  
 " "  
 %26  
 %5.5      %6.3 ( )

-10

%16.2      %44.3  
 " " %24.3      %10  
 " " %5.2  
 %16.2



%15.2                      %3.5                      %80.8  
" ( ) 5 . " %0.5



:                      11                      6

%55.2 : -

%70.8                      %90 -

%81.2 : -

%80.3 : -

%58.8 : -

%80.8 : -

_____		600	
:		%43	%57
		24-15	%22.8
		34-25	%37
		44-35	%18.8
		54-45	%14.8
		55	%6.6
	.%2 +		
	—		