

Figure 1; Number of new cases opened in the period 2001 to 2005 – annual breakdown

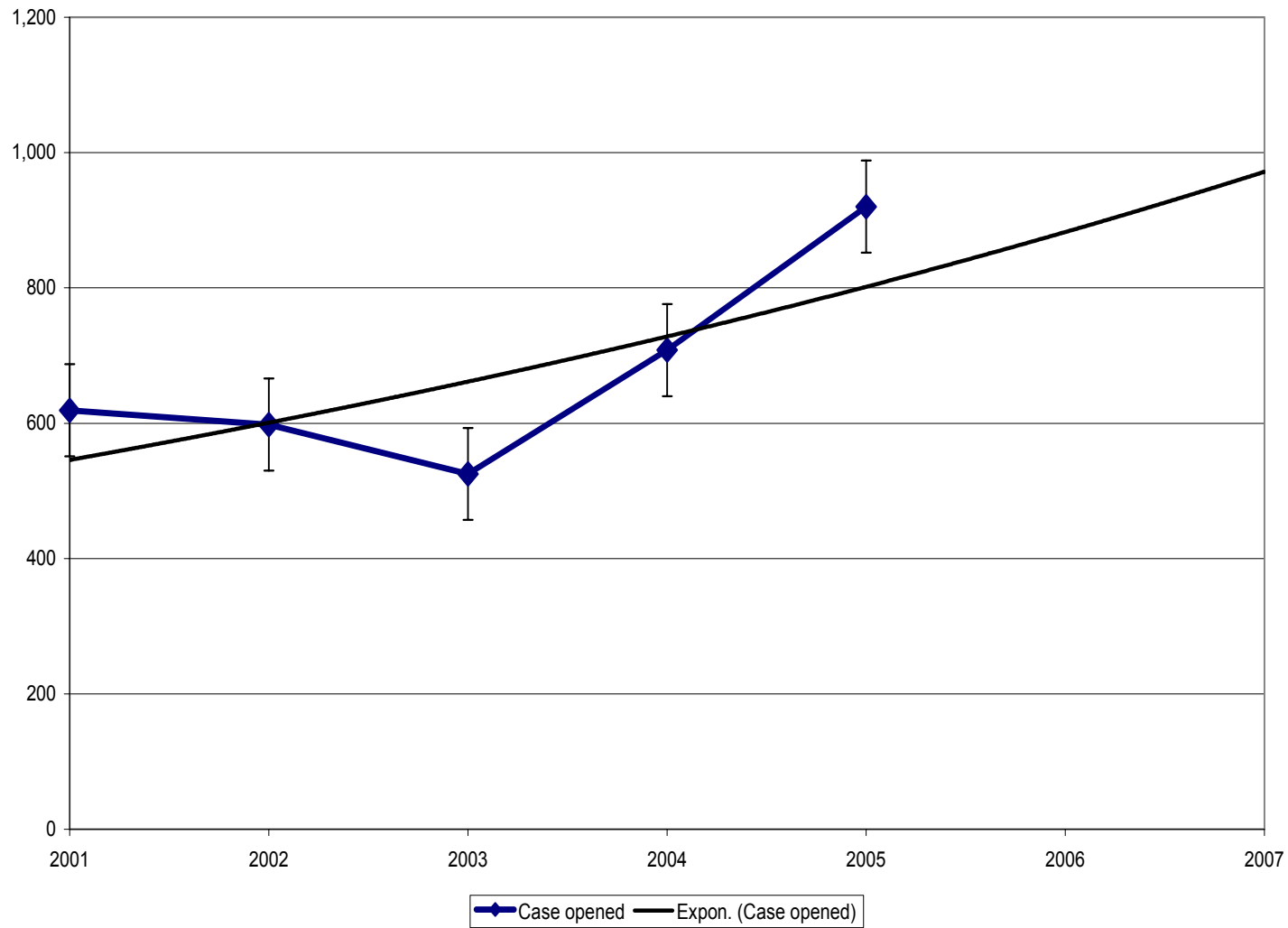


Figure 2; Number of new cases opened in the period 2001 to 2006 – monthly breakdown

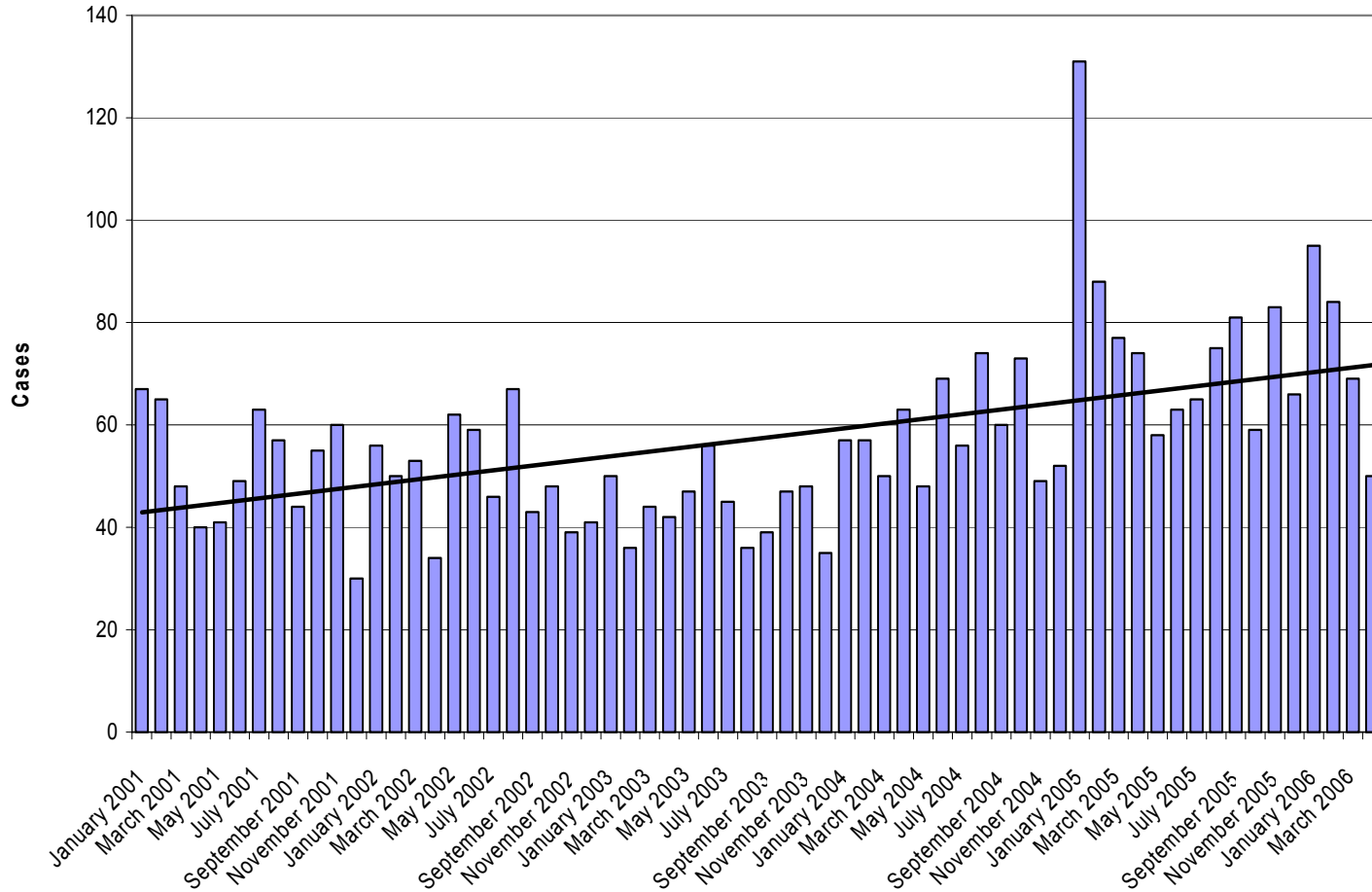


Figure 3: Number of cases closed in the period 2001 to 2005 – annual breakdown

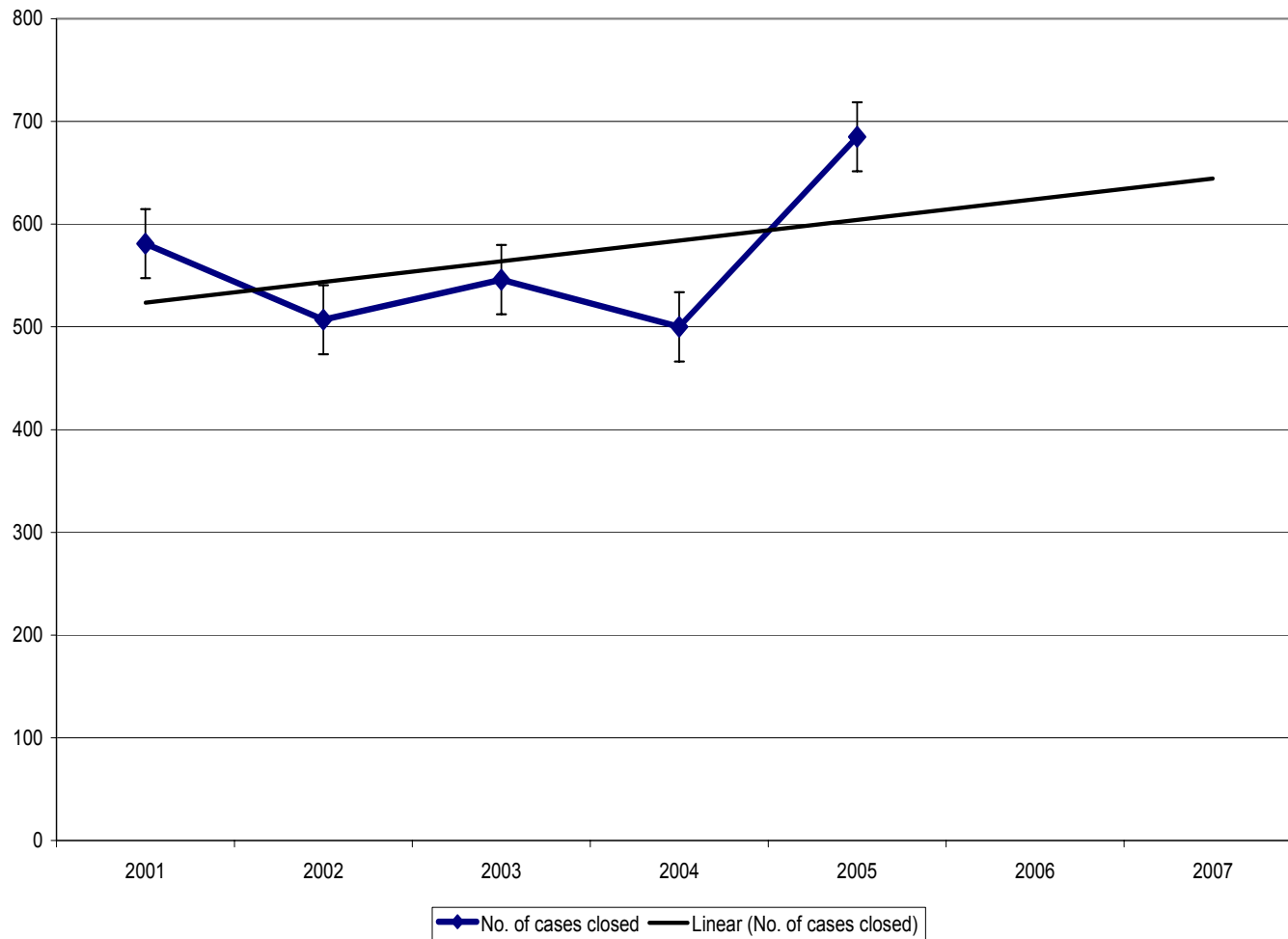


Figure 4; Number of cases closed in the period 2001 to 2005 – monthly breakdown

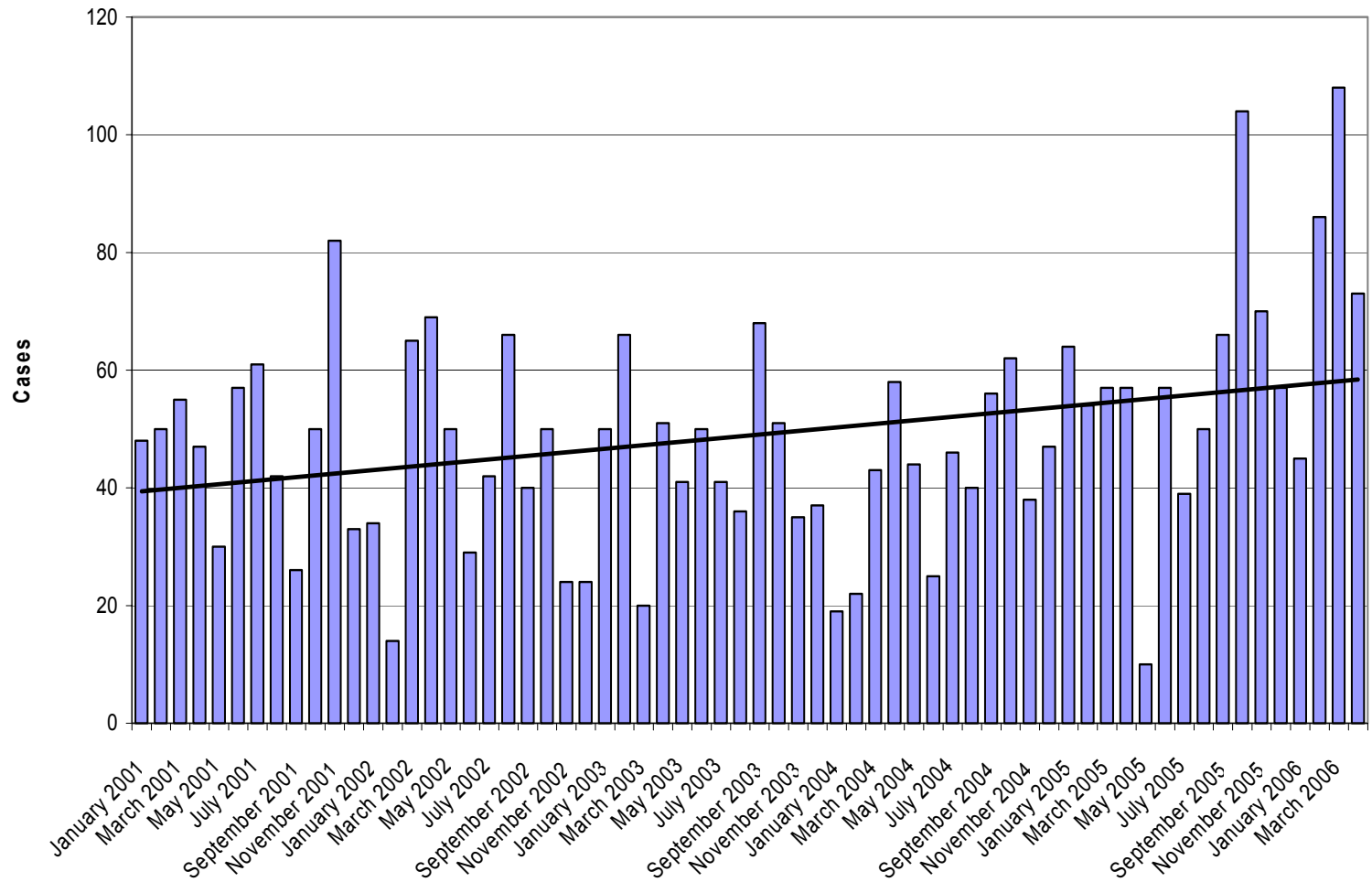


Figure 5; Cases (by date opened) that are currently still open

