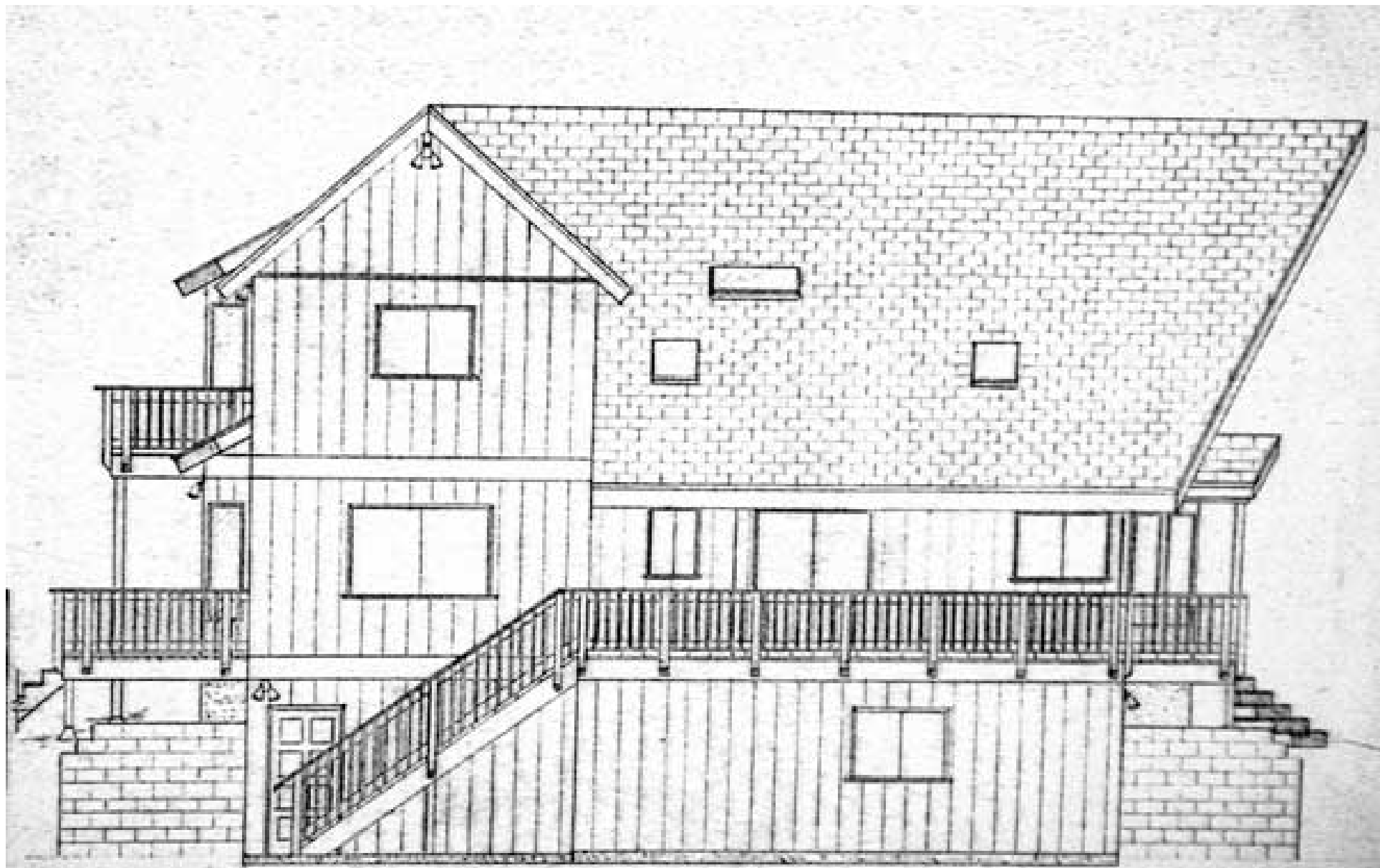




BUILDING ELEVATION



WEST FACING ELEVATION



FRONT ELEVATION
SCALE 1/8" = 1'-0"

DATE: 12/15/2011
BY: [Signature]
PROJECT: [Project Name]

1234567890
[Text]



ARCHITECT
[Text]

NO. [Number]
[Text]

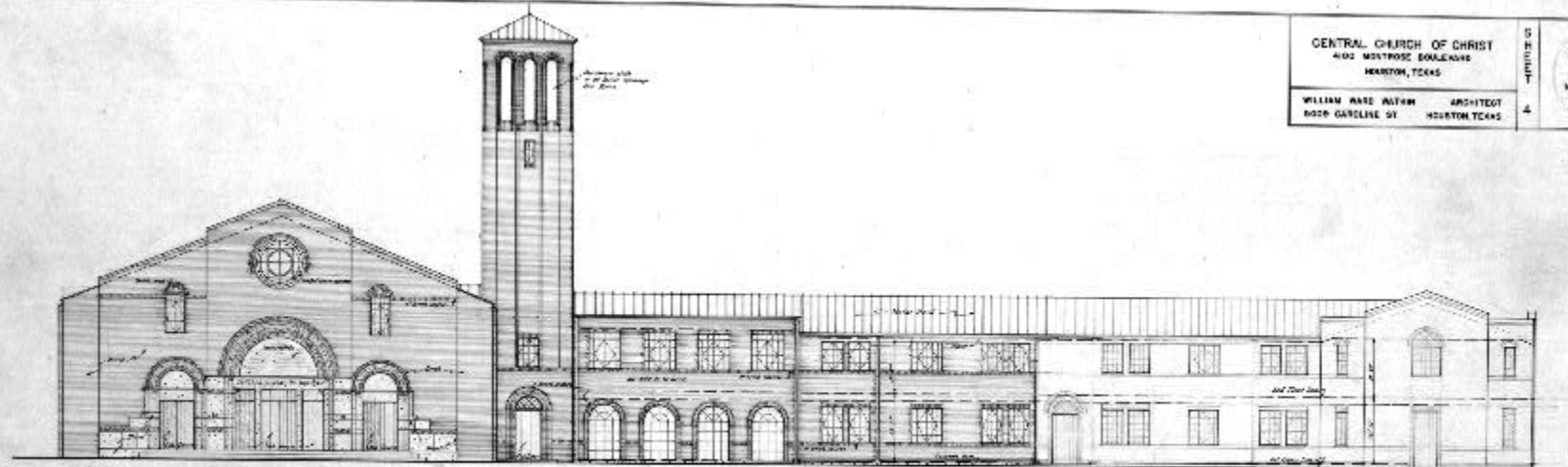
[Text]

[Text]

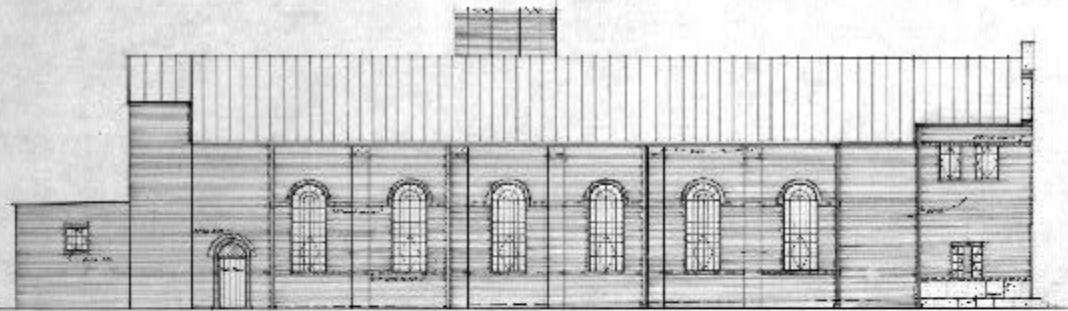
[Text]

CENTRAL CHURCH OF CHRIST
 402 MONTROSE BOULEVARD
 HOUSTON, TEXAS

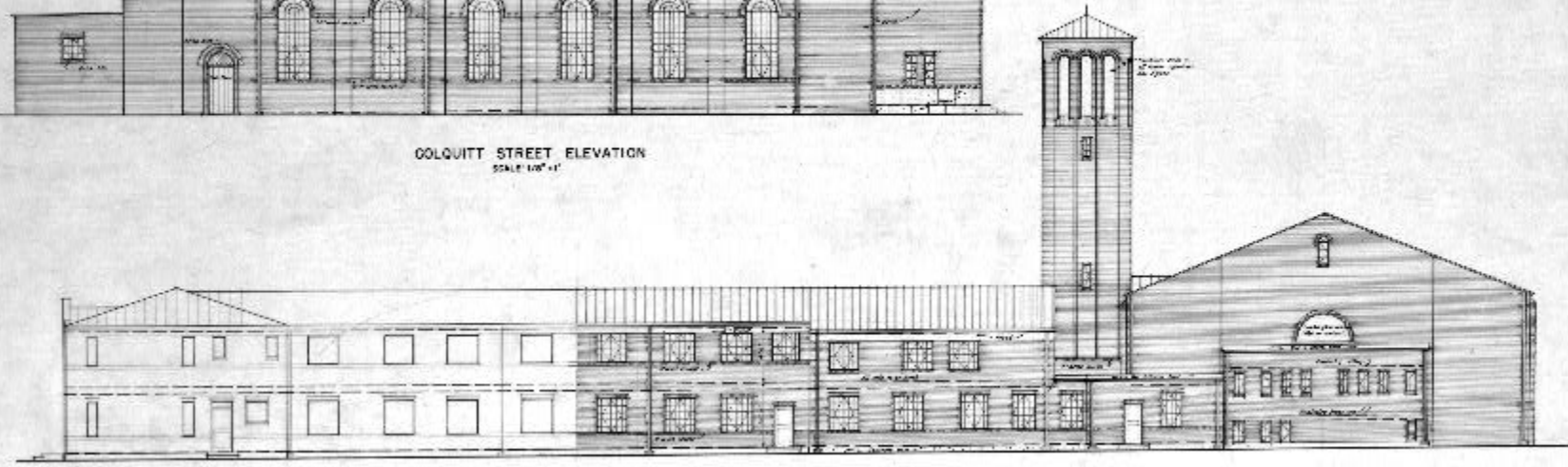
WILLIAM AND ALVIN ARCHITECTS
 802 GARLAND ST. HOUSTON, TEXAS



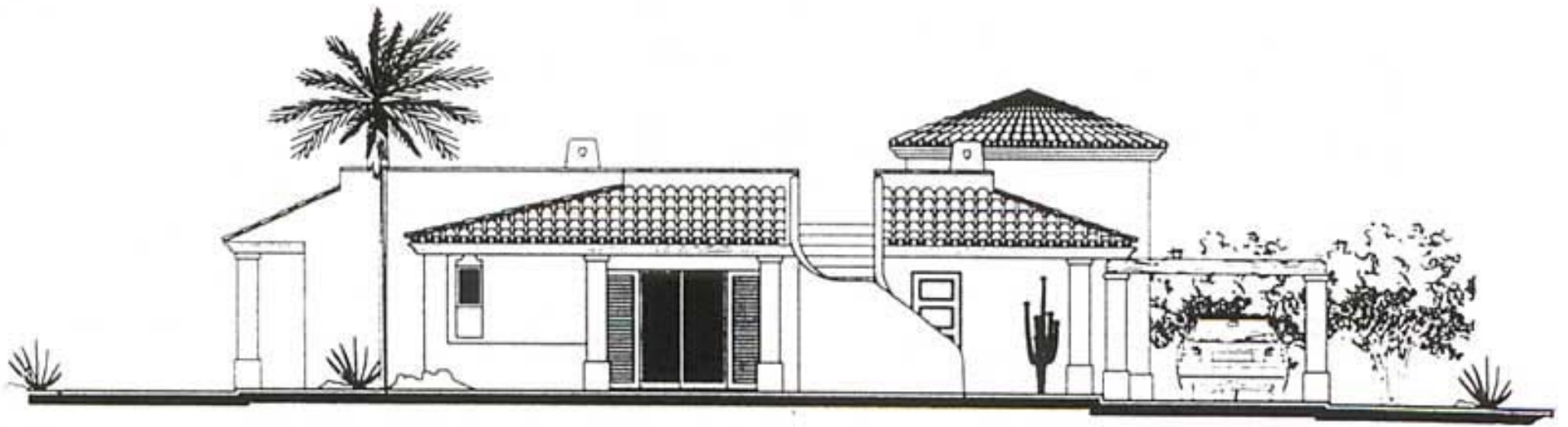
MONTROSE BOULEVARD ELEVATION
 SCALE 1/8" = 1'



COLQUITT STREET ELEVATION
 SCALE 1/8" = 1'



REAR ELEVATION
 SCALE 1/8" = 1'

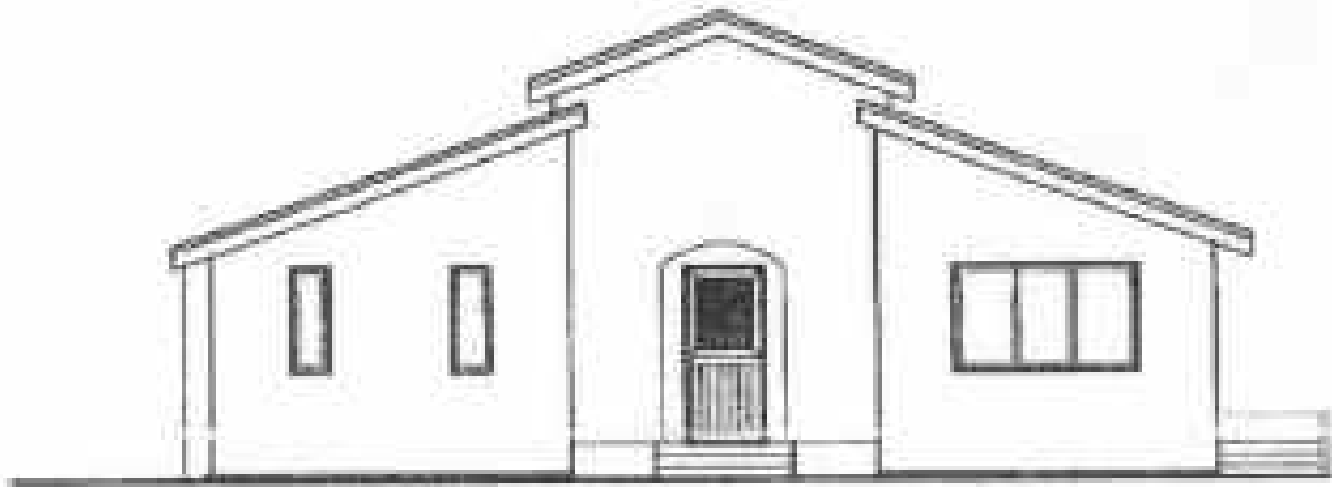




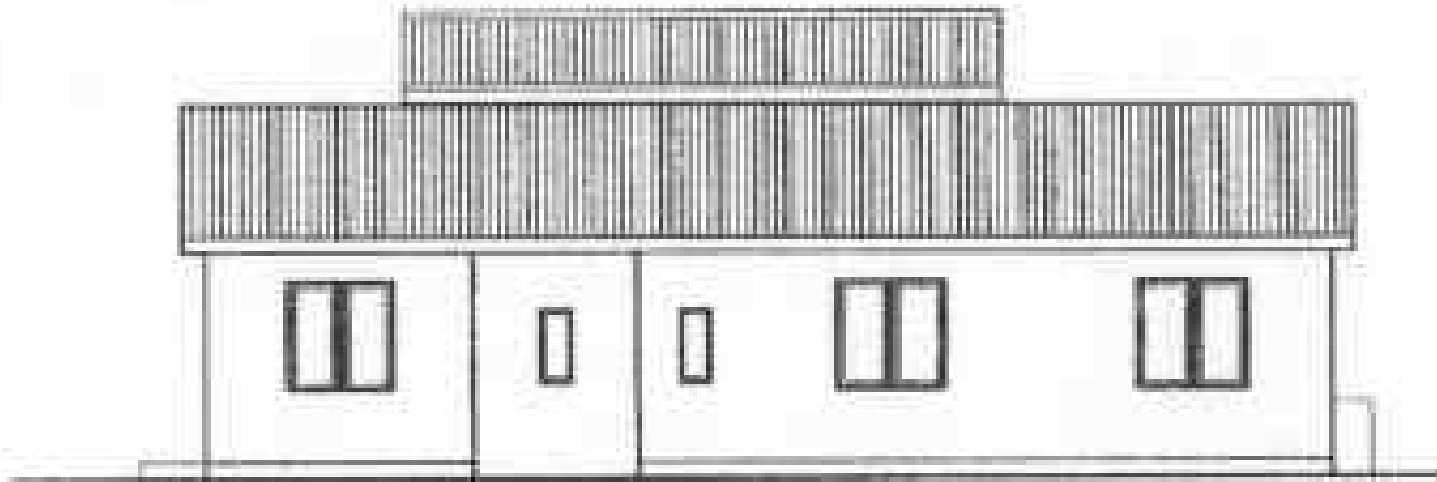
SIDE ELEVATION



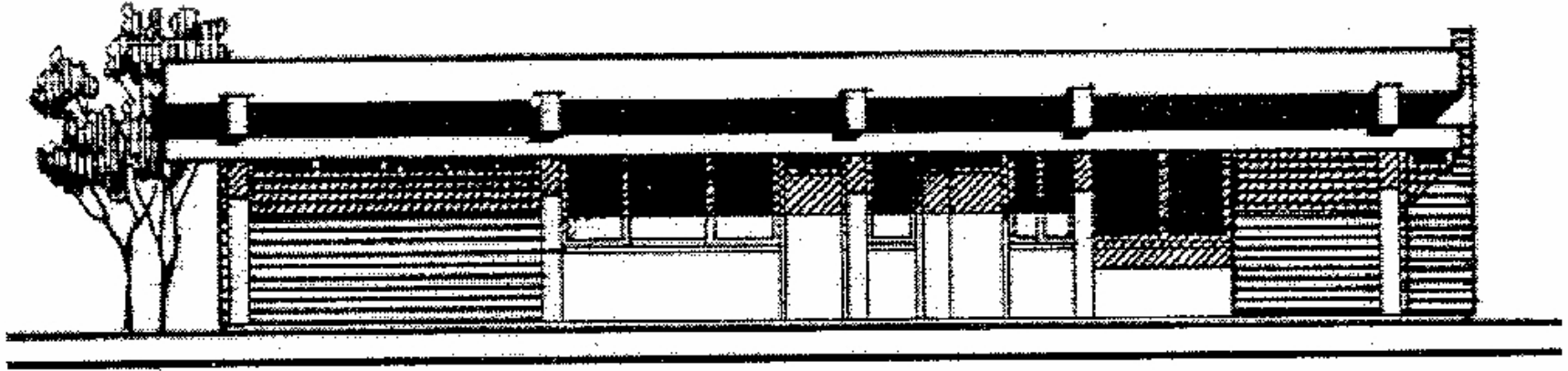
SIDE ELEVATION



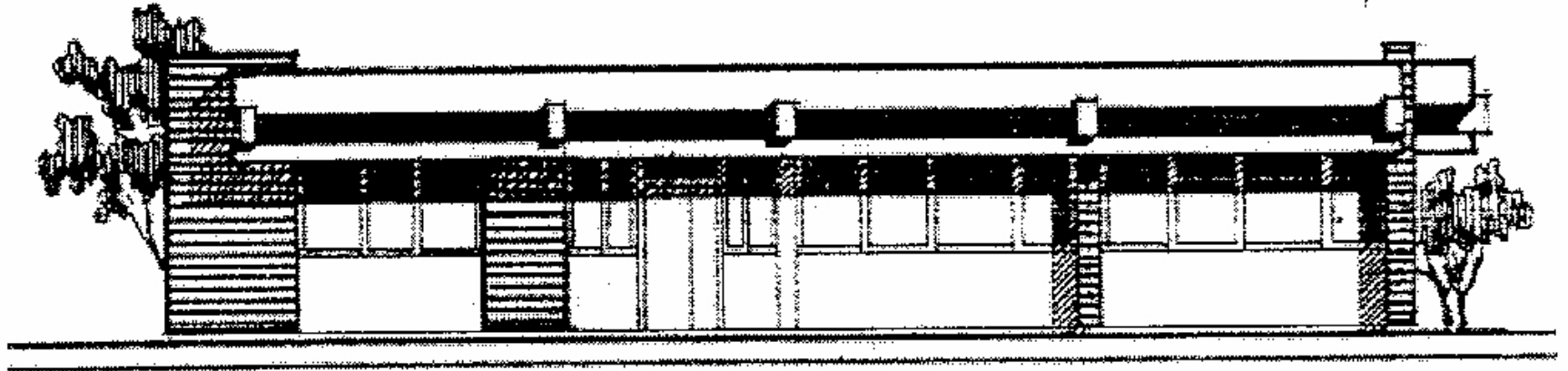
FRONT ELEVATION



SIDE ELEVATION



واجهة شمالية



واجهة جنوبية





BUILDING ELEVATION

تم بحمد الله