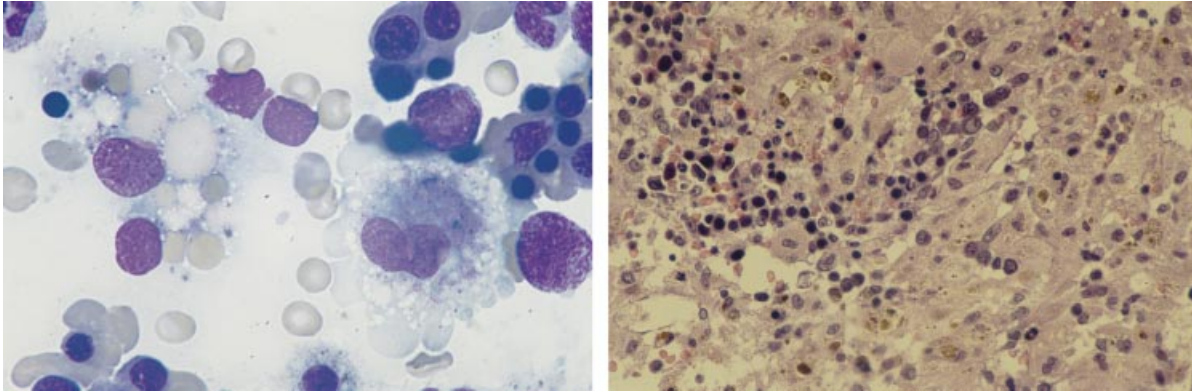


Langerhans cell histiocytosis



Bone marrow infiltration was detected in an 18-month-old girl in whom a diagnosis of Langerhans cell histiocytosis had previously been established by skin biopsy. The cells of the cutaneous infiltrate were demonstrated to be CD1a positive and to contain Birbeck granules. The neoplastic cells in the bone marrow aspirate were large cells with oval, grooved or lobulated nuclei and voluminous cytoplasm. Some of them were phagocytic (left). The trephine biopsy (right) showed a cohesive infiltrate of large cells with abundant pale pink cytoplasm.

University of Minnesota

RICHARD D. BRUNNING