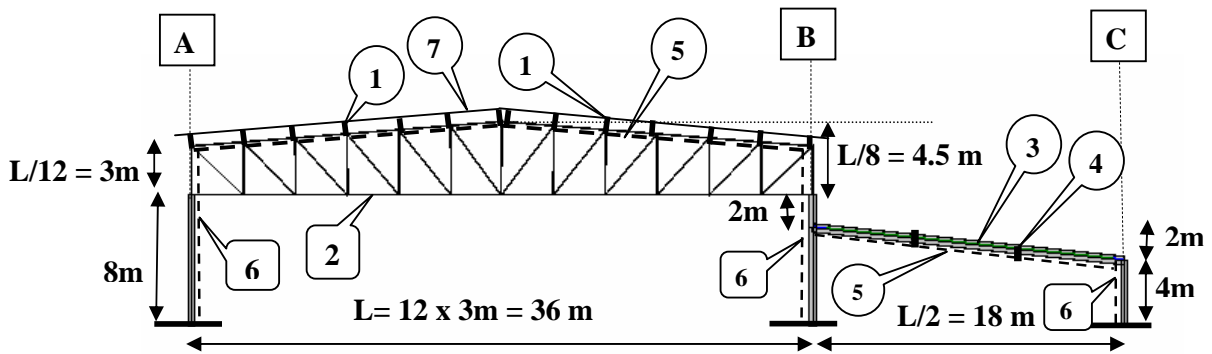


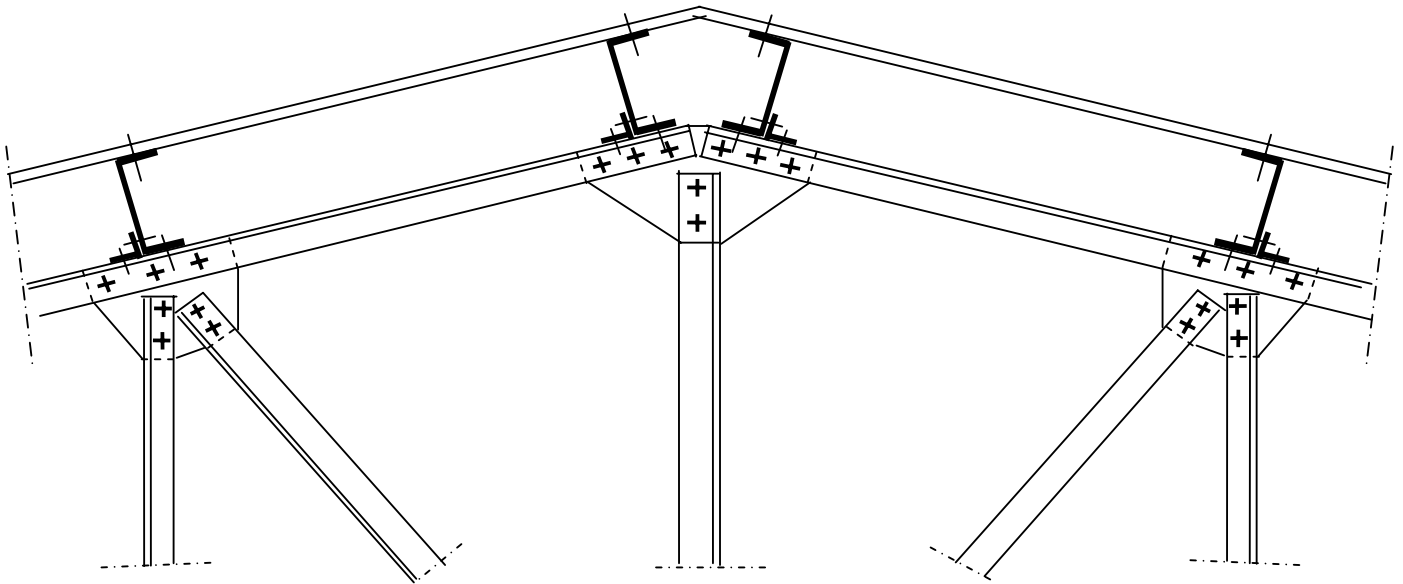
Structural General Layout of a Steel Industrial Structure



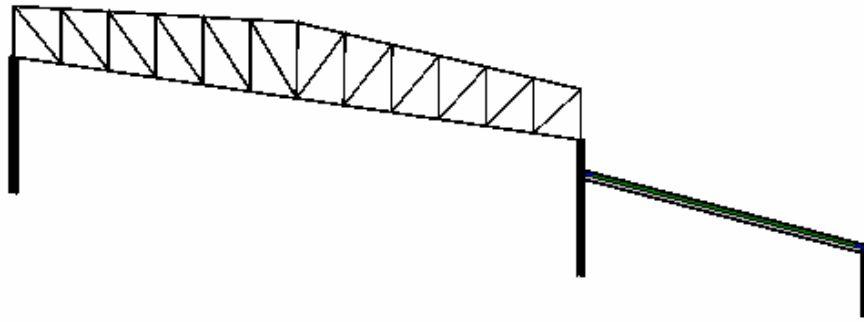
Elevation 1 : 100

- 1 – Purlins
- 2- Main truss
- 3- Main frame
- 4- Main beams

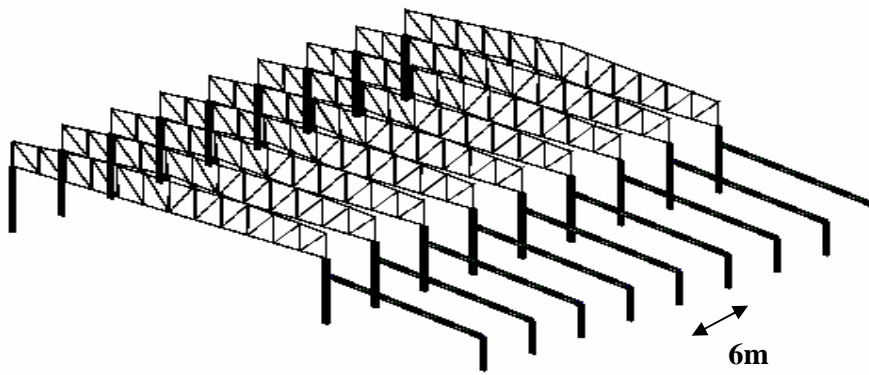
- 5- Horizontal bracings
- 6- Vertical bracings
- 7- Steel sheets



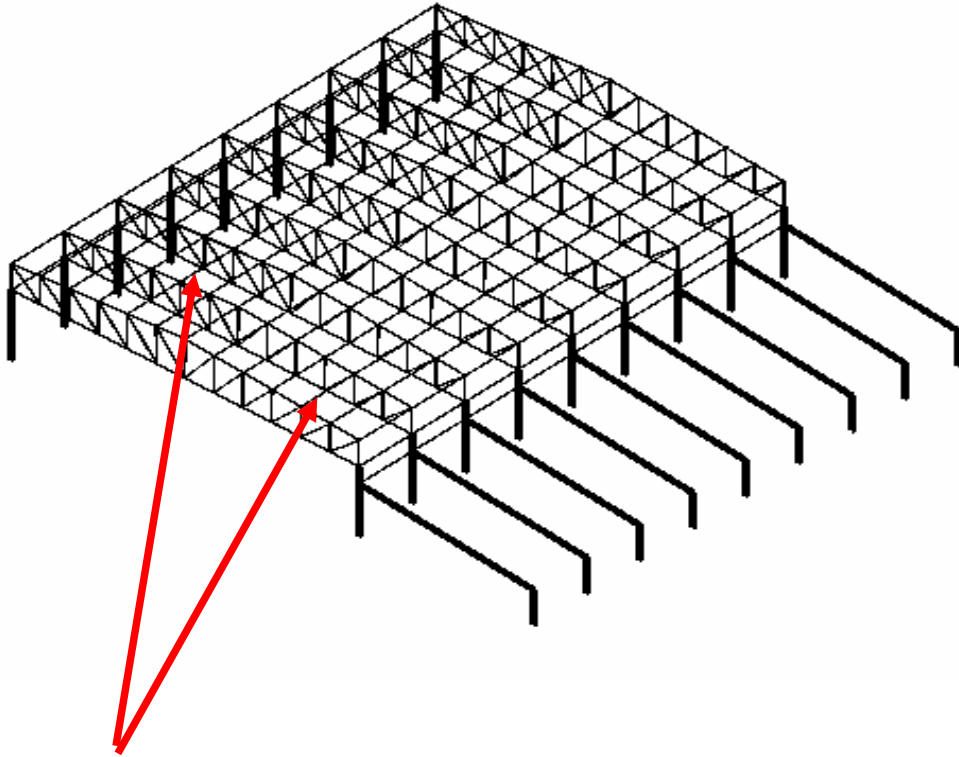
Details of central joint of main truss



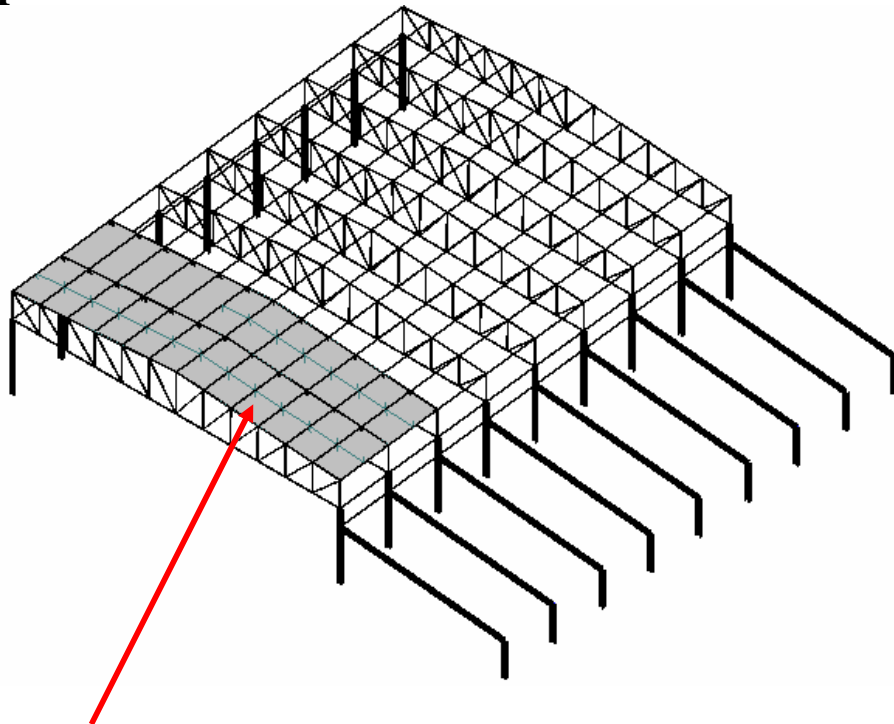
Main structural system



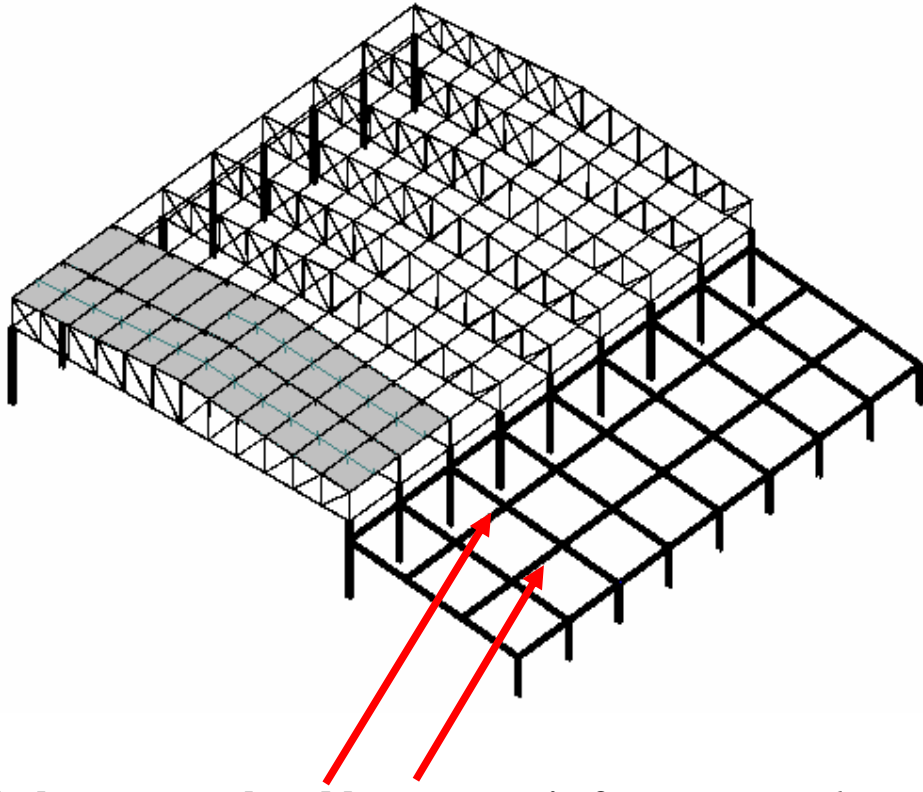
Main structural system is repeated every 6 m



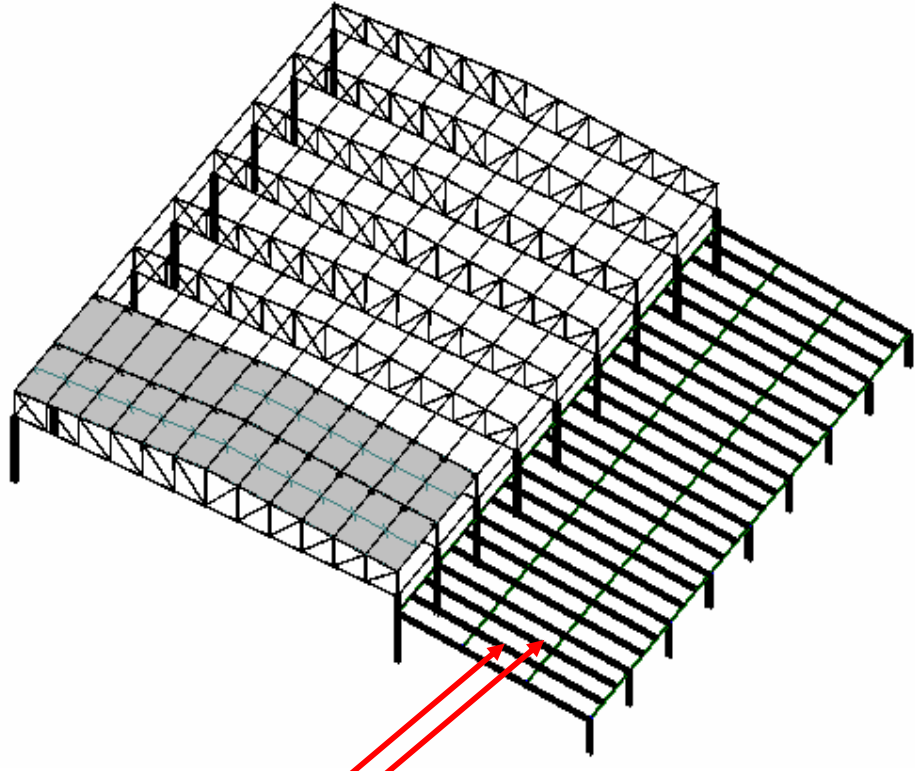
**The trusses are connected with longitudinal purlines
ay upper cord members**



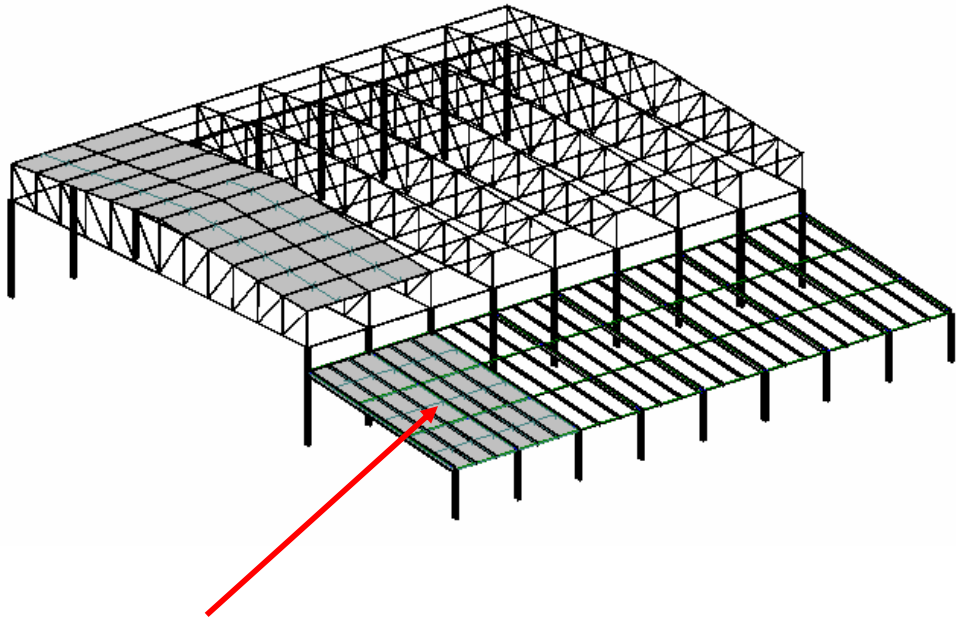
The steel sheets are fastened on top of the purlines



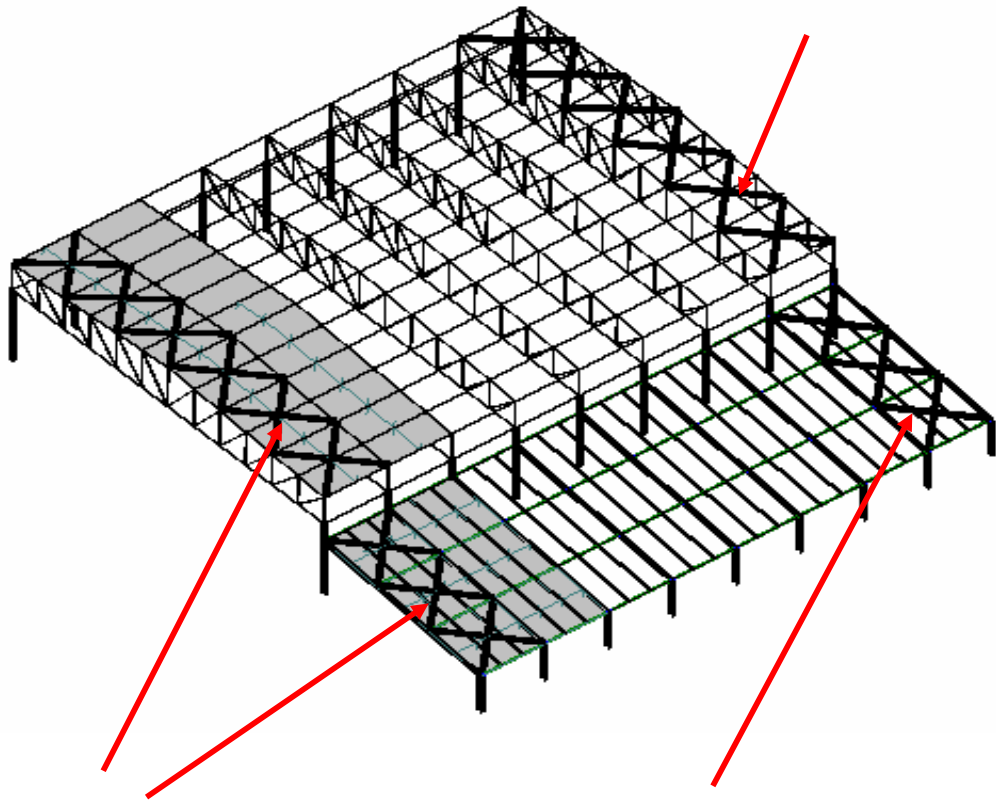
Main beams are placed between main frames every 6m



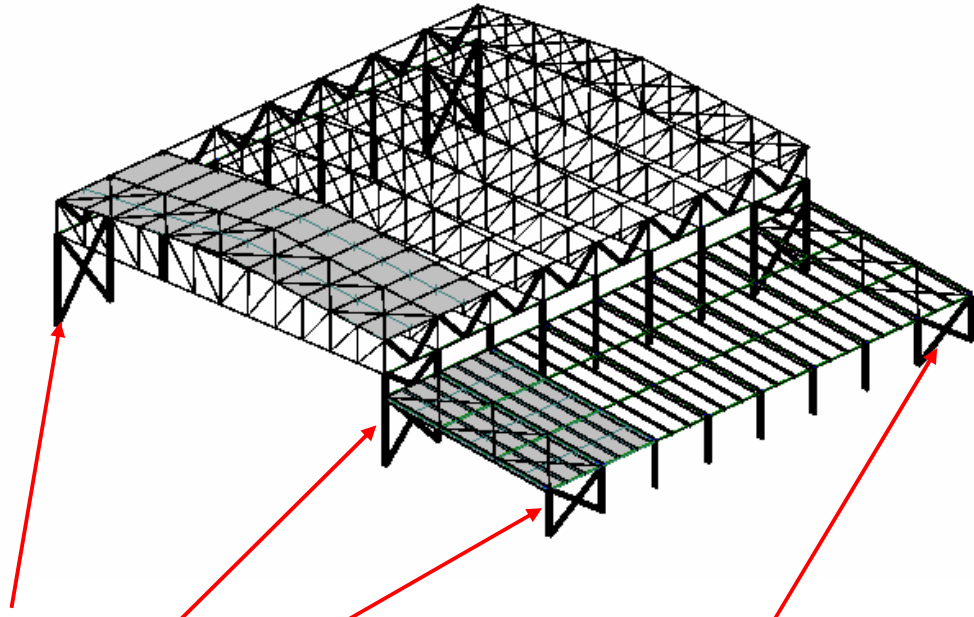
Secondary beams are placed every 2 m



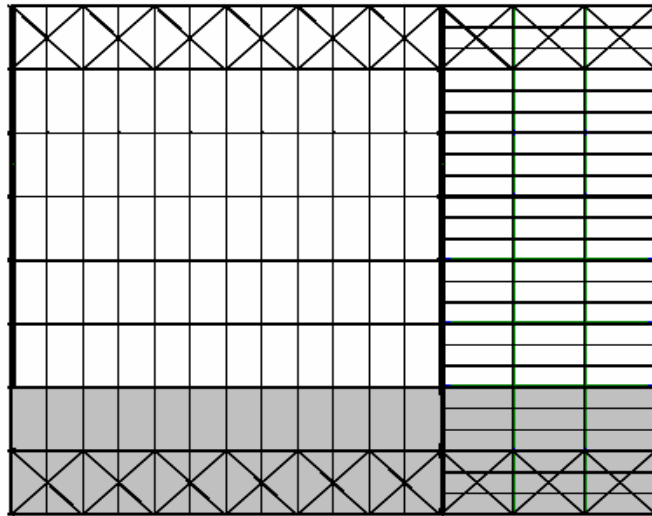
The steel sheets are fastened on top of the beams



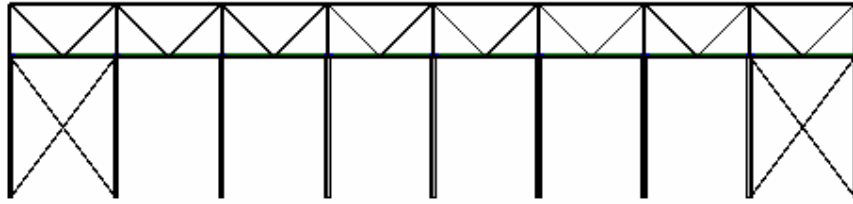
Horizontal bracings are placed at first and last bays



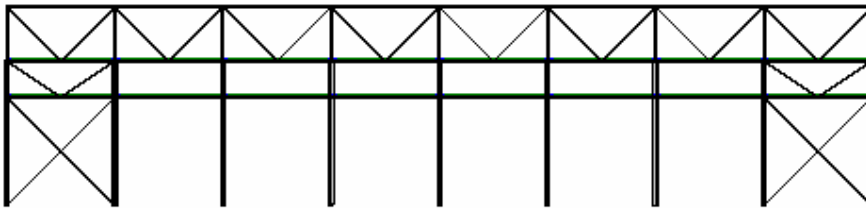
Vertical bracings are placed at first and end bays along axes A, B ,and C



Plan View 1:100



Side View at Axis (A) 1:100



Side View at Axis (B) 1:100



Side View at Axis (C) 1:100