

()
 ()

6 2
 1.50 0.75

3 0.00025 6
 (y_c) 0.022

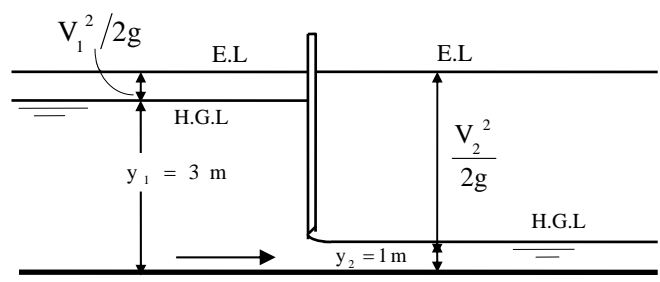
4.6 0.0004 4
 (y_c) (y_n) 0.025

Z = 1.5 2.0 5.0
 1.0 25 n = 0.020

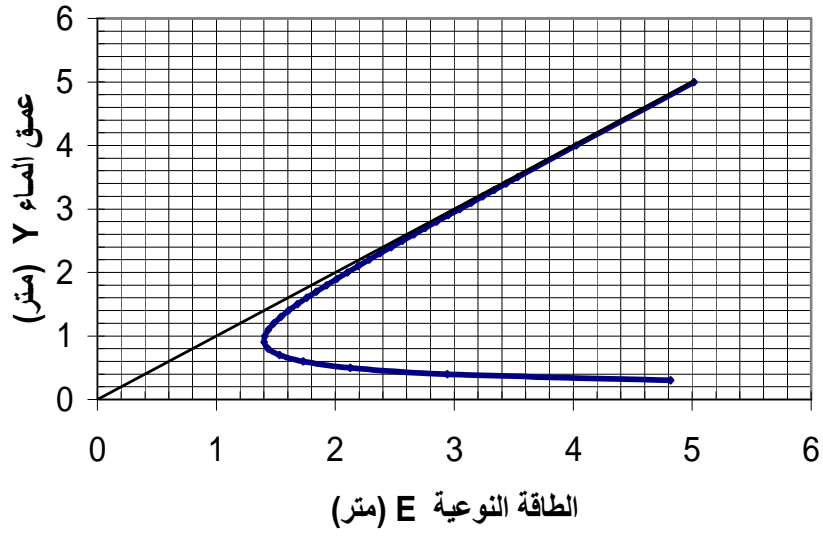
3.8 18.5
 Z = 2.0

4 Z = 1.0
 (y_n) 0.00016 n = 0.020 20
 (y_c)

0.00080 n = 0.010



2
. 1.4 0.4



1.6
. 2.6 0.2

